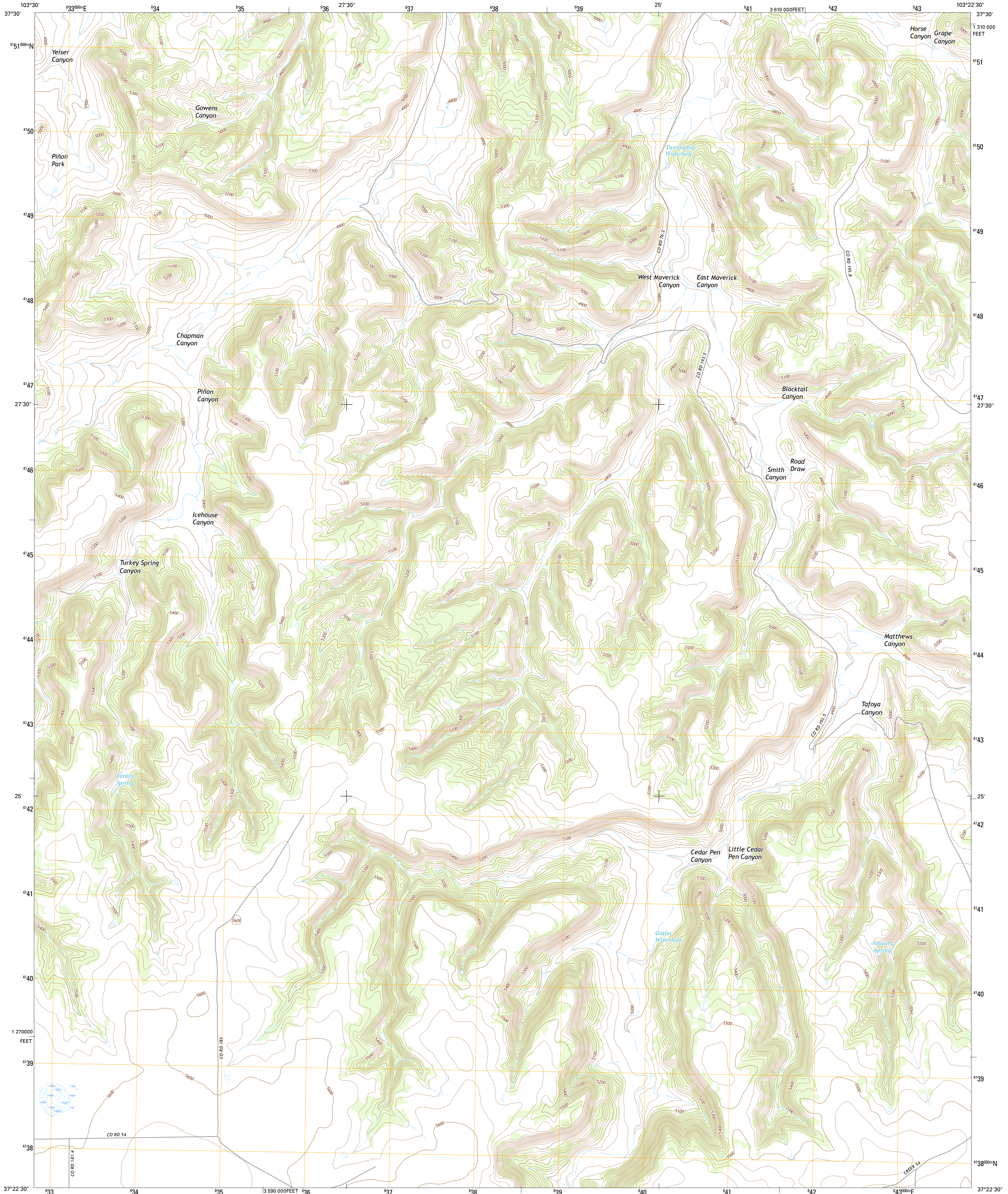




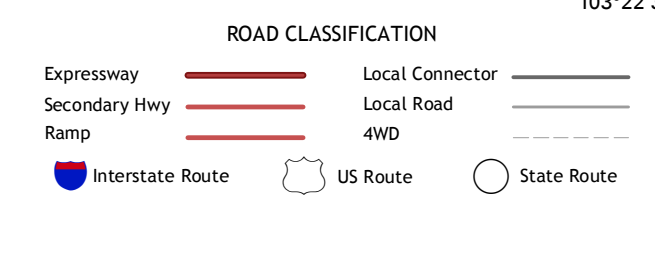
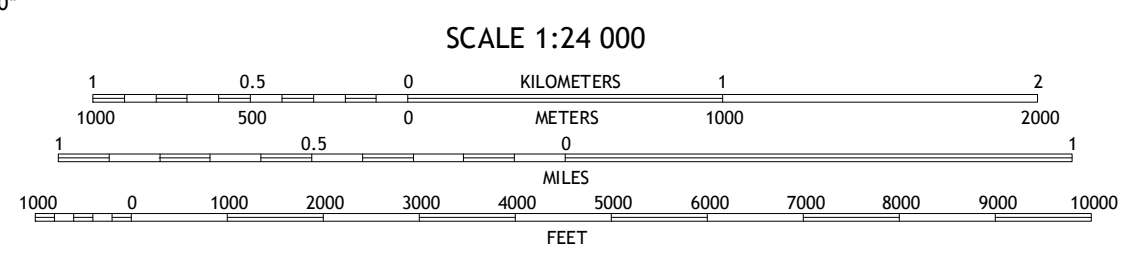
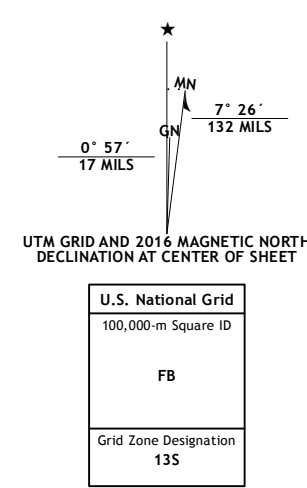
U.S. DEPARTMENT OF THE INTERIOR
U.S. GEOLOGICAL SURVEY



ICEHOUSE CANYON QUADRANGLE
COLORADO-LAS ANIMAS CO.
7.5-MINUTE SERIES



Produced by the United States Geological Survey
 North American Datum of 1983 (NAD83)
 World Geodetic System of 1984 (WGS84). Projection and
 1 000-meter grid: Universal Transverse Mercator, Zone 13S
 10 000-foot ticks: Colorado Coordinate System of 1983 (south
 zone)
 Imagery.....NAIP, July 2013
 Roads.....U.S. Census Bureau, 2015 - 2016
 Names.....GNIS, 2016
 Hydrography.....National Hydrography Dataset, 2013
 Contours.....National Elevation Dataset, 2005
 Boundaries.....Multiple sources; see metadata file 1972 - 2016
 Public Land Survey System.....BLM, 2011
 Wetlands.....FWS National Wetlands Inventory 1977 - 2014



1	2	3	1 Beatty Canyon
2	3	4	2 Lost Canyon
3	4	5	3 Brown Canyon
4	5	6	4 Plum Canyon
5	6	7	5 Robbers Roost Canyon
6	7	8	6 Villegren
7	8		7 Cherry Canyon
8			8 Kim North

ADJOINING QUADRANGLES

CONTOUR INTERVAL 20 FEET
 NORTH AMERICAN VERTICAL DATUM OF 1988

This map was produced to conform with the
 National Geospatial Program US Topo Product Standard, 2011.
 A metadata file associated with this product is draft version 0.6.19

ICEHOUSE CANYON, CO
2016

