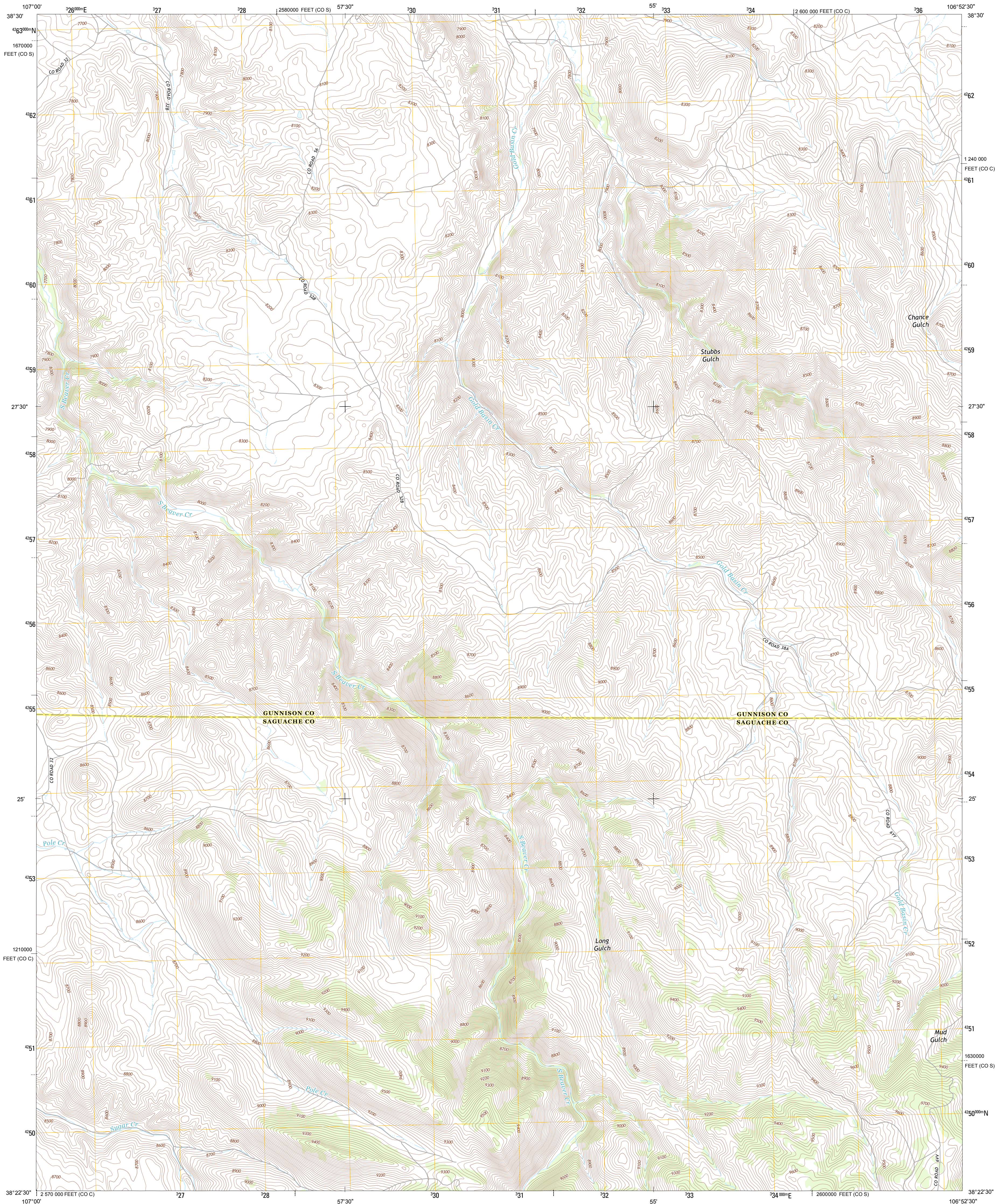




U.S. DEPARTMENT OF THE INTERIOR
U. S. GEOLOGICAL SURVEY

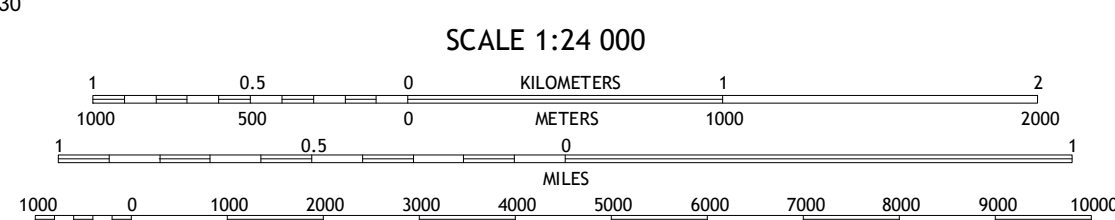
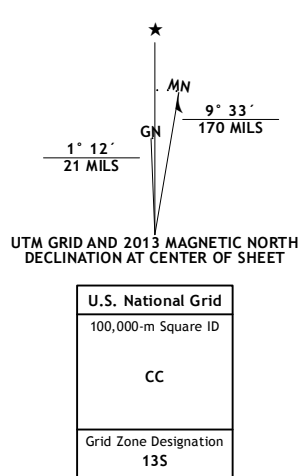


IRIS NW QUADRANGLE
COLORADO
7.5-MINUTE SERIES



Produced by the United States Geological Survey
North American Datum of 1983 (NAD83)
World Geodetic System of 1984 (WGS84). Projection and
1 000-meter grid: Universal Transverse Mercator, Zone 13S
10 000-foot ticks: Colorado Coordinate System of 1983 (central
and south zones)

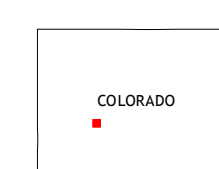
Imagery.....NAIP, August 2011
Roads.....©2006-2012, TomTom
Names.....GNF, 2013
Hydrography.....National Hydrography Dataset, 2011
Contours.....National Elevation Dataset, 2003
Boundaries, IRW, IBC, USGS, 1972 - 2012
Public Land Survey System.....BLM, 2011



SCALE 1:24 000

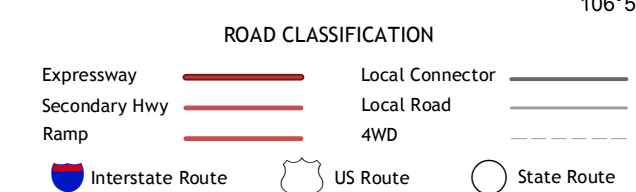
CONTOUR INTERVAL 20 FEET
NORTH AMERICAN VERTICAL DATUM OF 1988

This map was produced to conform with the
National Geospatial Program US Topo Product Standard, 2011.
A metadata file associated with this product is draft version 0.6.14



QUADRANGLE LOCATION

McIntosh Mountain	Gunnison	Signal Peak
Big Mesa	Iris NW	Iris
Powderhorn	Spring Hill Creek	Sawtooth Mountain



IRIS NW, CO
2013

ADJOINING 7.5 QUADRANGLES