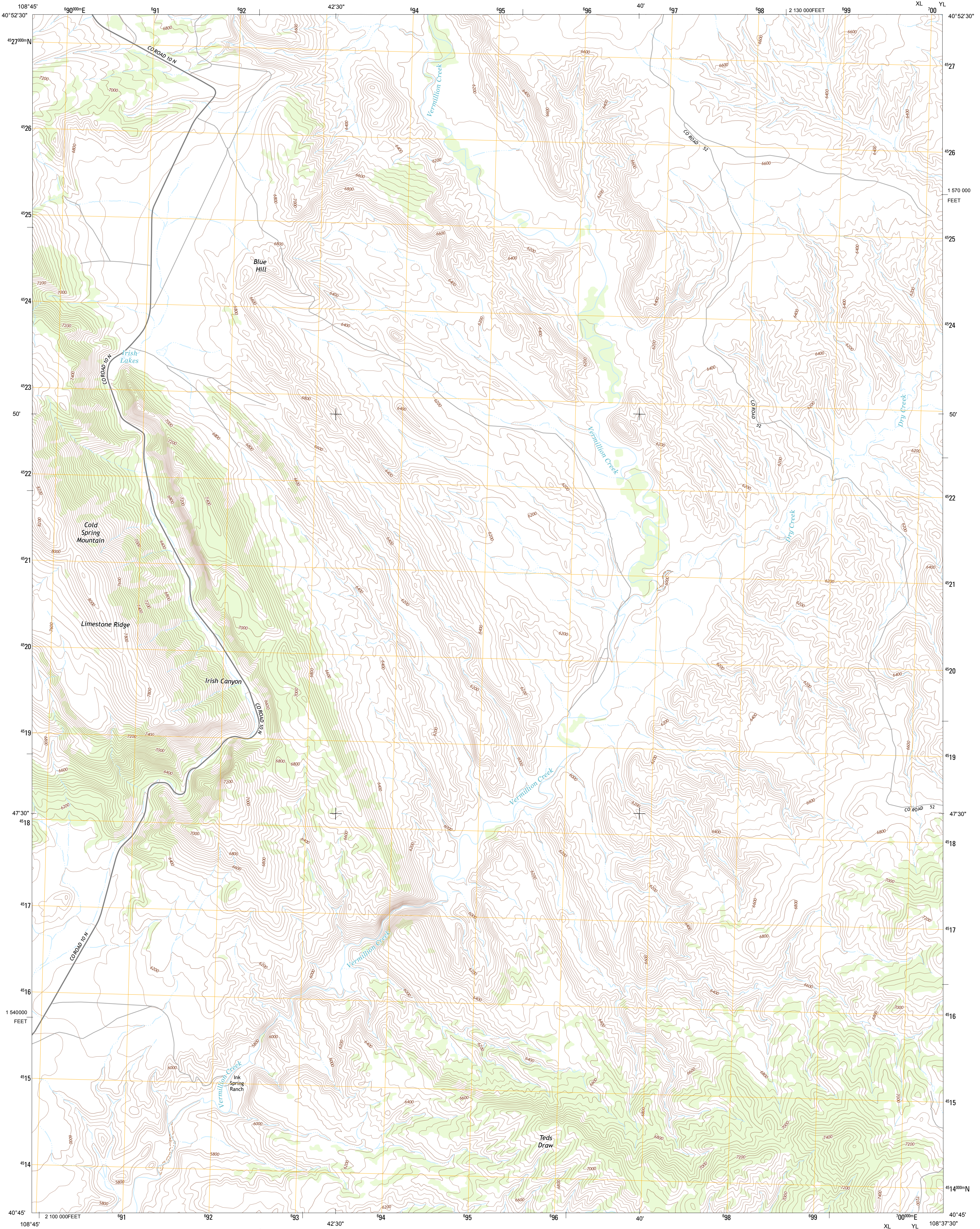




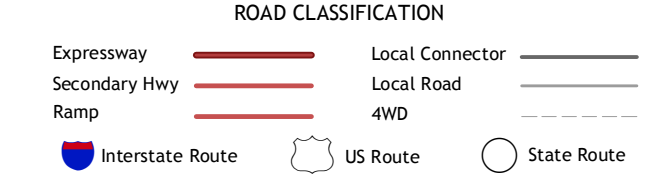
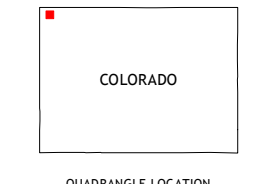
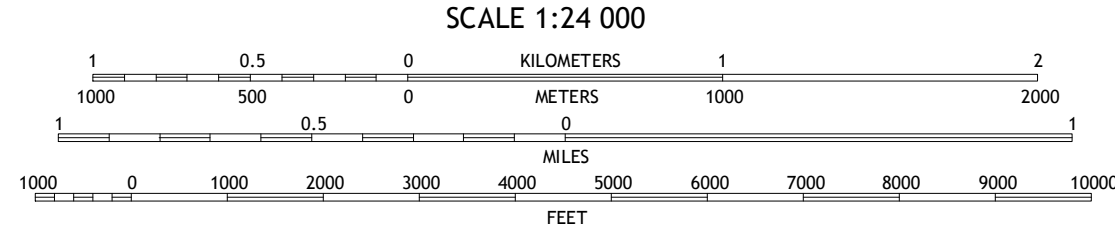
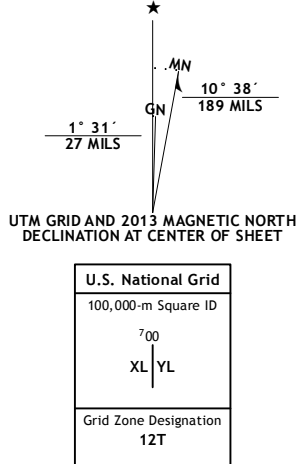
U.S. DEPARTMENT OF THE INTERIOR  
U. S. GEOLOGICAL SURVEY



IRISH CANYON QUADRANGLE  
COLORADO-MOFFAT CO.  
7.5-MINUTE SERIES



Produced by the United States Geological Survey  
North American Datum of 1983 (NAD83)  
World Geodetic System of 1984 (WGS84), Projection and  
1 000-meter grid: Universal Transverse Mercator, Zone 12T  
10 000-foot ticks: Colorado Coordinate System of 1983 (north zone)



QUADRANGLE LOCATION

Sparks	Sugarloaf Butte	Hawatha
Big Joe Basin	Irish Canyon	G Spring
Jack Springs	Vermilion Mesa	Sheephead Basin

Imagery.....©NAIP, July 2011  
Roads.....©2006-2012 TomTom  
Names.....©2013  
Hydrography.....National Hydrography Dataset, 2011  
Contours.....National Elevation Dataset, 2003  
Boundaries.....Census, BWC, BIC, USGS, 1972 - 2012  
Public Land Survey System.....BLM, 2011

CONTOUR INTERVAL 40 FEET  
NORTH AMERICAN VERTICAL DATUM OF 1988  
This map was produced to conform with the  
National Geospatial Program US Topo Product Standard, 2011.  
A metadata file associated with this product is draft version 0.6.14

IRISH CANYON, CO  
2013

ADJOINING 7.5 QUADRANGLES