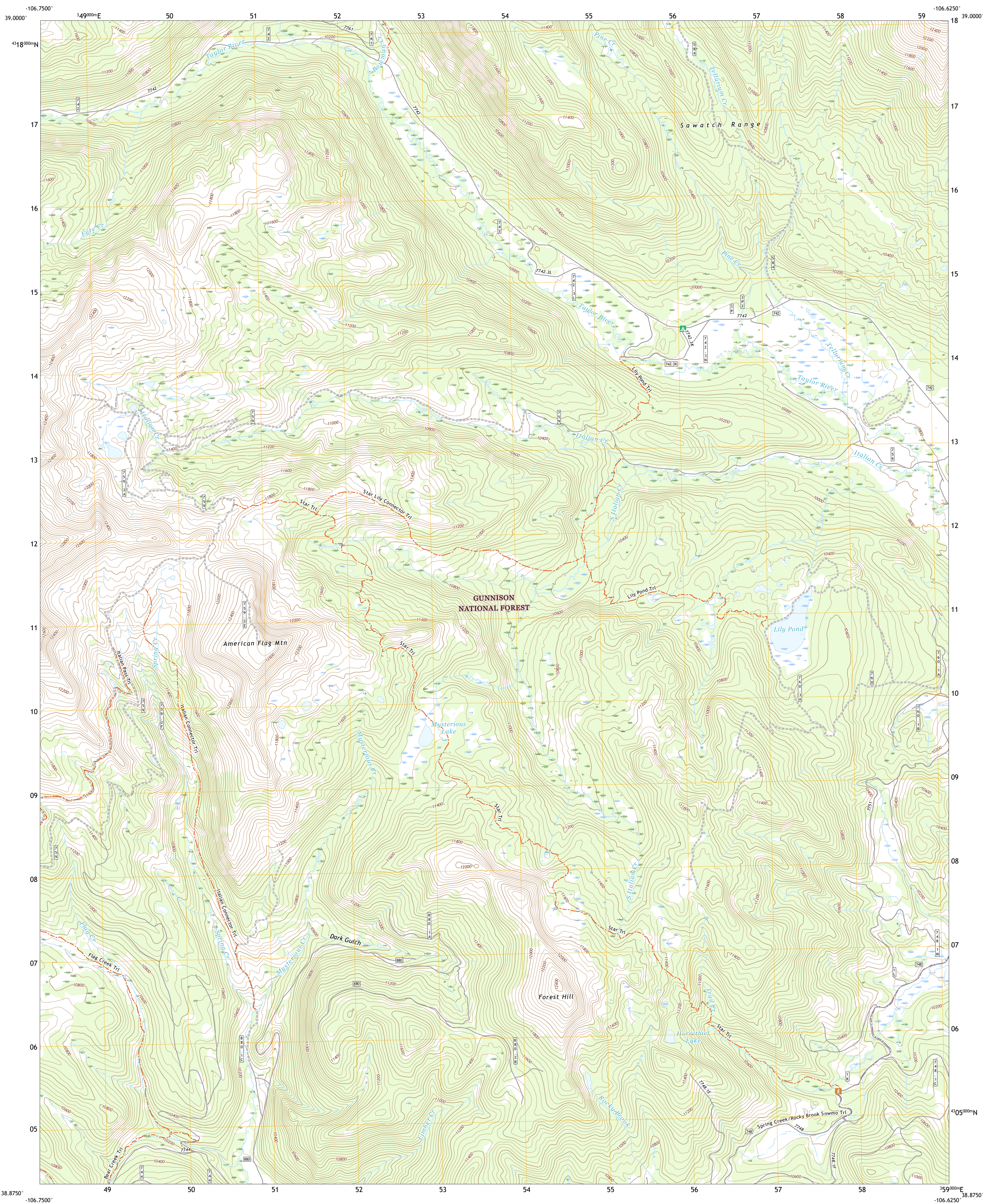




U.S. DEPARTMENT OF THE INTERIOR
U.S. GEOLOGICAL SURVEY



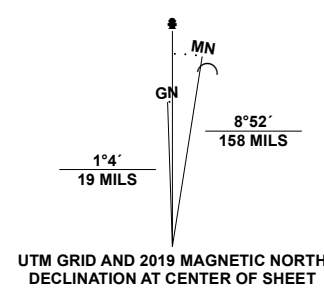
ITALIAN CREEK QUADRANGLE
COLORADO - GUNNISON COUNTY
7.5-MINUTE SERIES



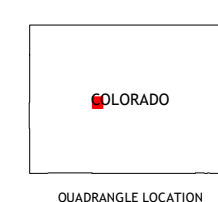
Produced by the United States Geological Survey

North American Datum of 1983 (NAD83)
World Geodetic System of 1984 (WGS84). Projection and
1 000-meter grid: Universal Transverse Mercator, Zone 13S
This map is not a legal document. Boundaries may be
generalized for this map scale. Private lands within government
reservations may not be shown. Obtain permission before
entering private lands.

Imagery.....NAIP, October 2017 - January 2018
Roads.....U.S. Census Bureau, 2016
Roads within US Forest Service lands.....FS Topo Data
with limited Forest Service updates, 2013
Names.....GNIS, 2016 - 2021
Hydrography.....National Hydrography Dataset, 2000 - 2020
Contours.....National Elevation Dataset, 2011 - 2021
Boundaries.....Multiple sources; see metadata file 2017 - 2021
Public Land Survey System.....BLM, 2021
Wetlands.....FWS National Wetlands Inventory 1983 - 2011



CONTOUR INTERVAL 40 FEET
NORTH AMERICAN VERTICAL DATUM OF 1988
This map was produced to conform with the
National Geospatial Program US Topo Product Standard.



QUADRANGLE LOCATION

1	2	3
4	5	6
7	8	

ADJOINING QUADRANGLES

- Hayden Peak
- New York Peak
- Independence Pass
- Pearl Pass
- Pieplant
- Cement Mountain
- Matchless Mountain
- Taylor Park Reservoir

- ROAD CLASSIFICATION**
- Expressway
 - Secondary Hwy
 - Interstate Route
 - FS Primary Route
 - Local Connector
 - Local Road
 - 4WD
 - FS Passenger Route
 - FS High Clearance Route
 - State Route
 - Clearance Route

Check with local Forest Service unit
for current travel conditions and restrictions.

ITALIAN CREEK, CO
2022

