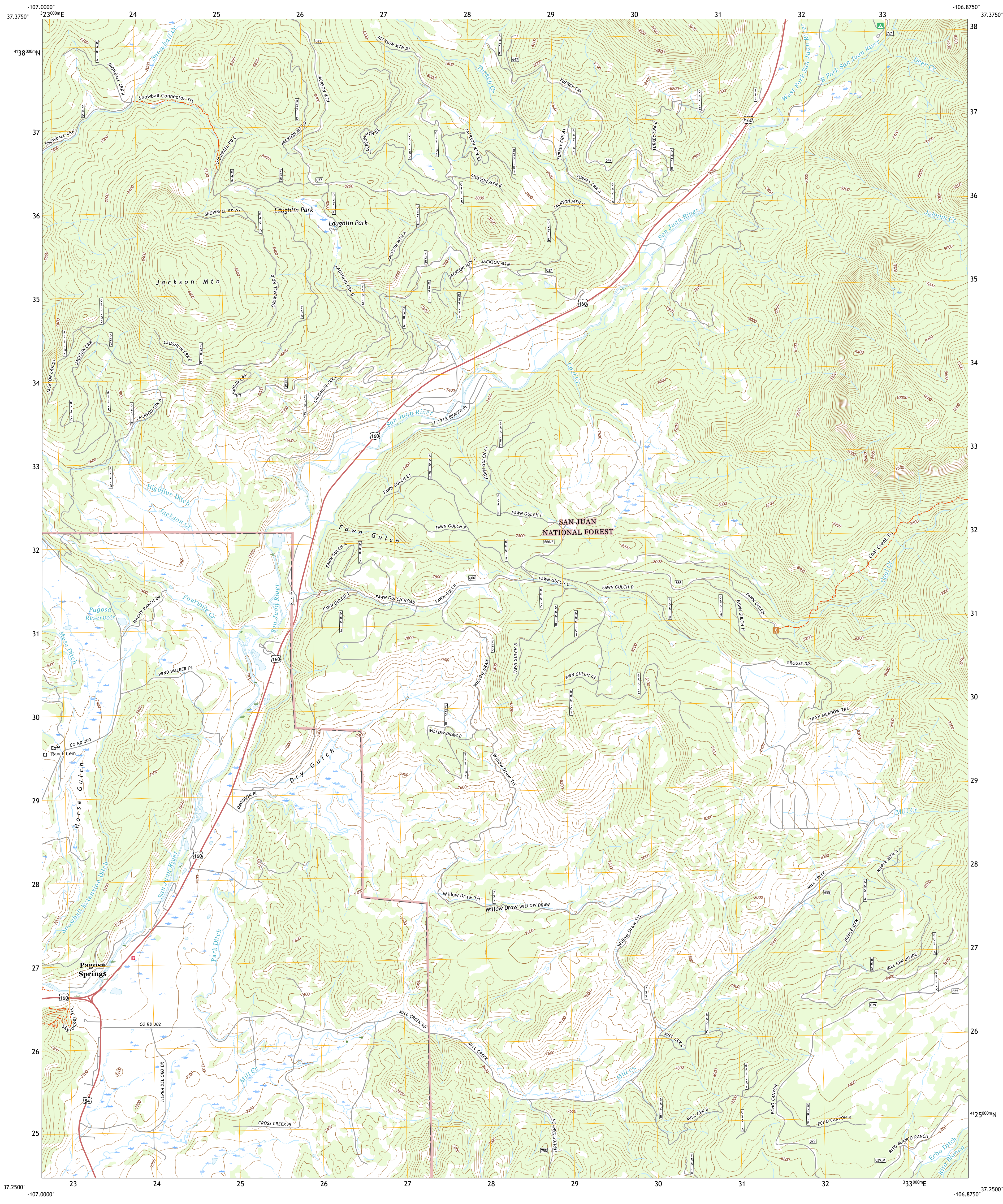




U.S. DEPARTMENT OF THE INTERIOR  
U.S. GEOLOGICAL SURVEY

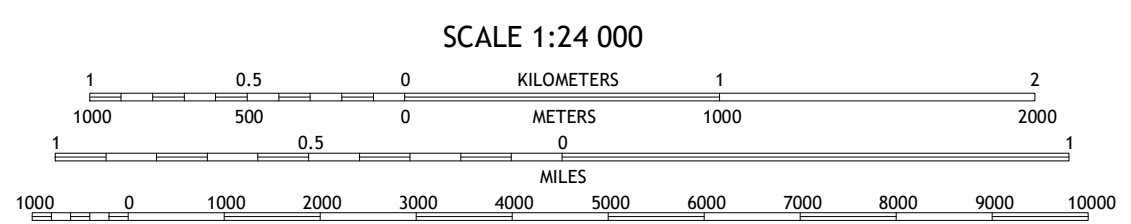
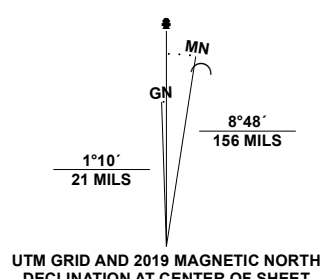


JACKSON MOUNTAIN QUADRANGLE  
COLORADO - ARCHULETA COUNTY  
7.5-MINUTE SERIES

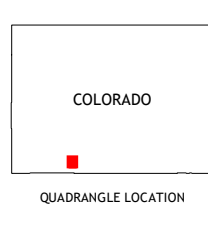


**Produced by the United States Geological Survey**

North American Datum of 1983 (NAD83)  
World Geodetic System of 1984 (WGS84). Projection and  
1 000-meter grid; Universal Transverse Mercator, Zone 13S  
This map is not a legal document. Boundaries may be  
generalized for this map scale. Private lands within government  
reservations may not be shown. Obtain permission before  
entering private lands.  
Imagery.....N.A.I.P., October 2017 - January 2018  
Roads.....U.S. Census Bureau, 2016 - 2016  
Roads within US Forest Service lands with limited Forest Service updates, 2013  
Names.....National Hydrography Dataset, 2000 - 2020  
Hydrography.....National Hydrography Dataset, 2000 - 2020  
Contours.....National Elevation Dataset, 2005  
Boundaries.....Multiple sources; see metadata file 2017 - 2021  
Public Land Survey System.....BLM, 2021  
Wetlands.....FWS National Wetlands Inventory 1983 - 1987



CONTOUR INTERVAL 40 FEET  
NORTH AMERICAN VERTICAL DATUM OF 1988  
This map was produced to conform with the  
National Geospatial Program US Topo Product Standard.



ADJOINING QUADRANGLES

1	2	3
4	5	6
7	8	

1 Pagosa Peak  
2 Saddle Mountain  
3 Wolf Creek Pass  
4 Pagosa Springs  
5 Blackhead Peak  
6 Oakbrush Hill  
7 Serviceberry Mountain  
8 Harris Lake

ROAD CLASSIFICATION

Expressway	Local Connector
Secondary Hwy	Local Road
Ramp	4WD
Interstate Route	US Route
FS Primary Route	FS Passenger Route
	FS High Clearance Route
	State Route

Check with local Forest Service unit  
for current travel conditions and restrictions.

JACKSON MOUNTAIN, CO  
2022

