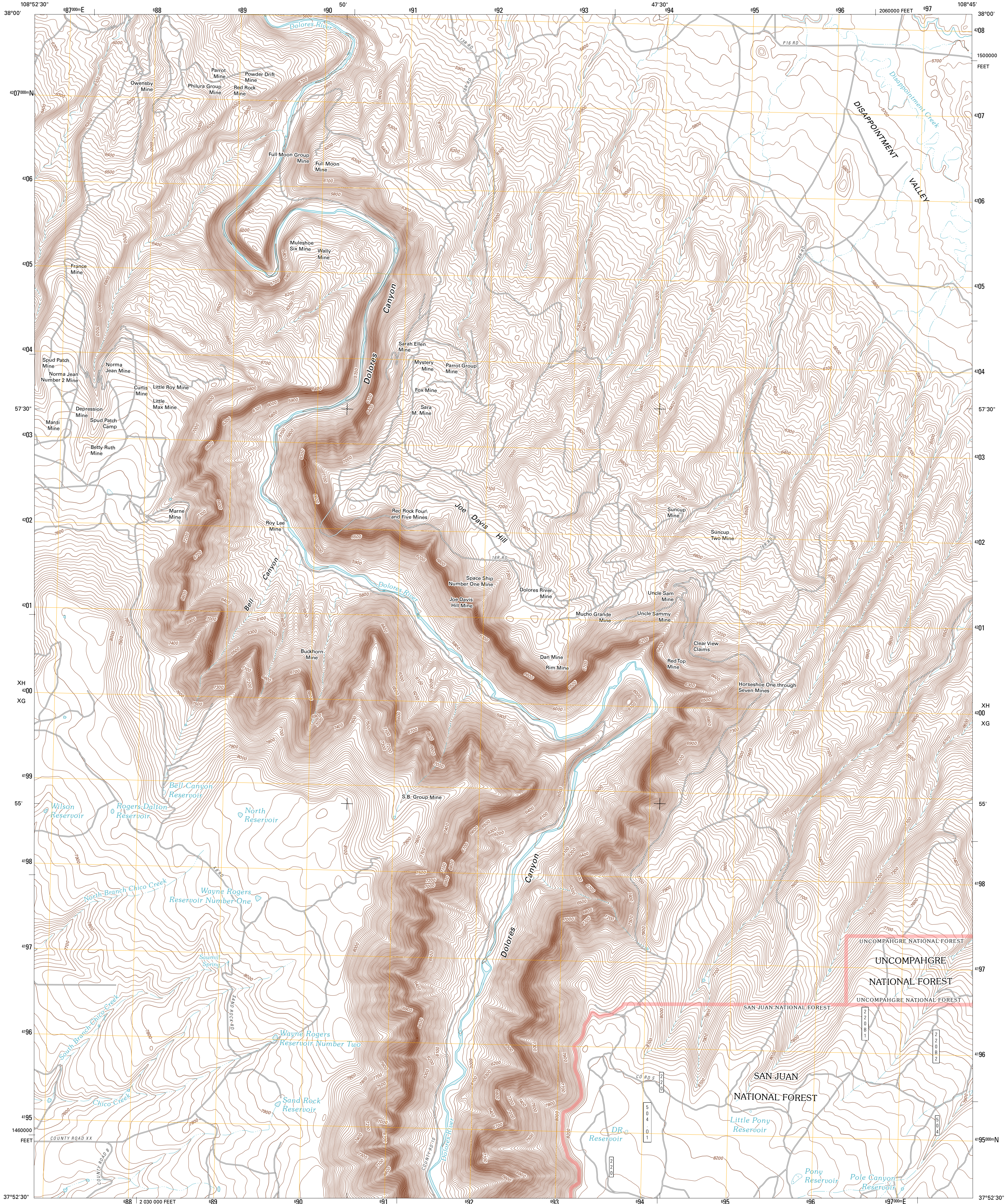




U.S. DEPARTMENT OF THE INTERIOR
U. S. GEOLOGICAL SURVEY

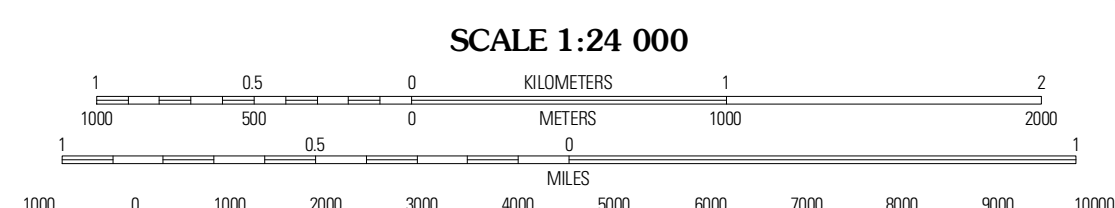
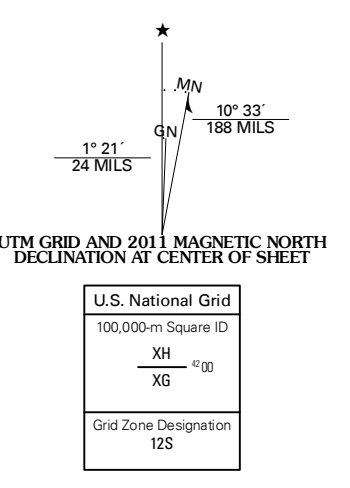


JOE DAVIS HILL QUADRANGLE
COLORADO
7.5-MINUTE SERIES

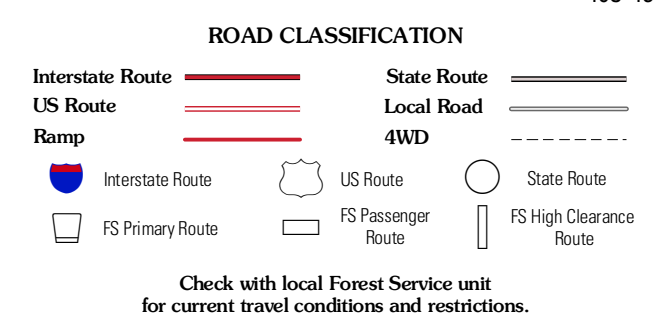
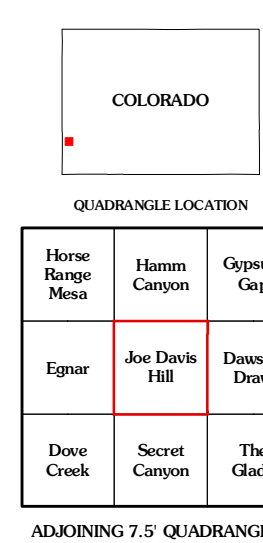


Produced by the United States Geological Survey
North American Datum of 1983 (NAD83)
World Geodetic System of 1984 (WGS84). Projection and
1 000-meter grid. Universal Transverse Mercator, Zone 12S
10 000-foot ticks. Colorado Coordinate System of 1983
(south zone)

Imagery: NADIP, June 2009
Roads: ©2006-2010 Tele Atlas
Roads within US Forest Service Lands: FSTopo Data
with limited Forest Service updates, 2009
Names: ©2010 National Hydrography Dataset, 2009
Contours: National Elevation Dataset, 2005



CONTOUR INTERVAL 20 FEET
NORTH AMERICAN VERTICAL DATUM OF 1988
This map was produced to conform with version 0.5.10 of the
draft USGS Standards for 7.5-Minute Quadrangle Maps.
A metadata file associated with this product is draft version 0.5.12



Check with local Forest Service unit
for current travel conditions and restrictions.

JOE DAVIS HILL, CO
2011

QUADRANGLE LOCATION

Horse Range Mesa	Hanno Canyon	Gypsum Gap
Eggar	Joe Davis Hill	Dawson Dene
Dove Creek	Secret Canyon	The Glade

ADJOINING 7.5 QUADRANGLES