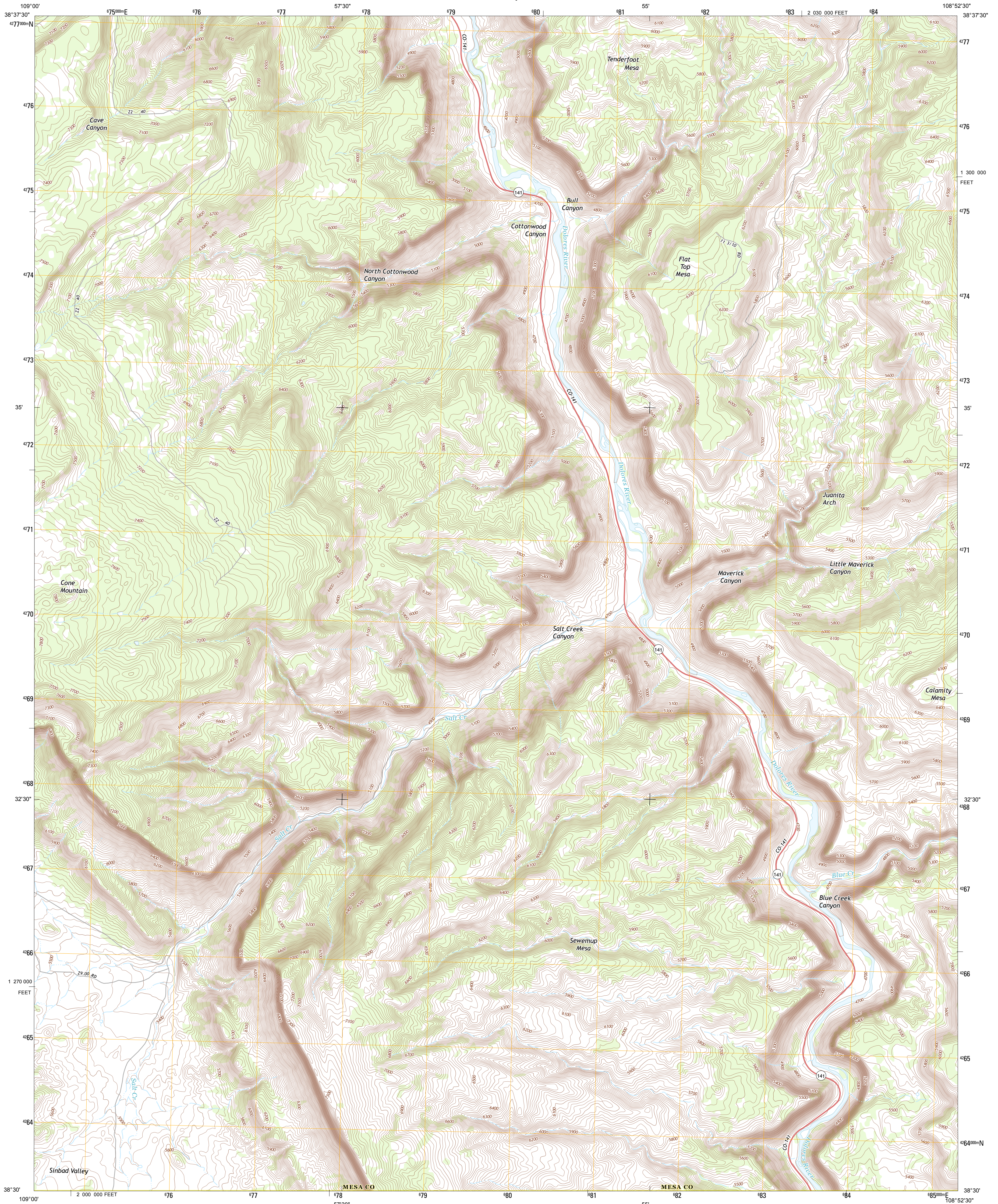




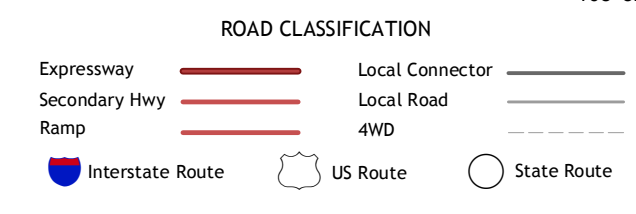
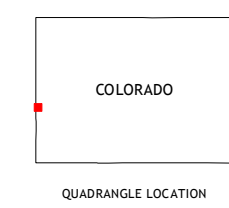
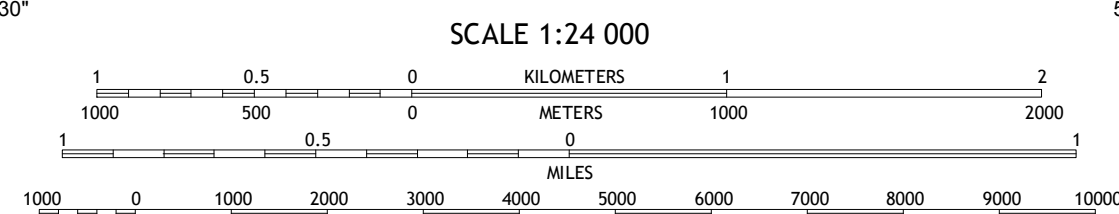
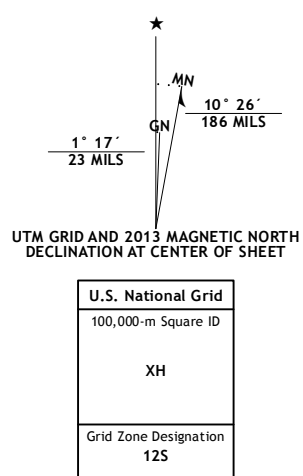
U.S. DEPARTMENT OF THE INTERIOR
U. S. GEOLOGICAL SURVEY



JUANITA ARCH QUADRANGLE
COLORADO-MESA CO.
7.5-MINUTE SERIES



Produced by the United States Geological Survey
North American Datum of 1983 (NAD83)
World Geodetic System of 1984 (WGS84). Projection and
1:000-meter grid: Universal Transverse Mercator, Zone 12S
10 000-foot ticks: Colorado Coordinate System of 1983 (central
zone)



Dolores Point North	Gateway	Pine Mountain
Dolores Point South	Juanita Arch	Calamity Mesa
Buckeye Reservoir	Roc Creek	Red Canyon

CONTOUR INTERVAL 20 FEET
NORTH AMERICAN VERTICAL DATUM OF 1988

This map was produced to conform with the National Geospatial Program US Topo Product Standard, 2011. A metadata file associated with this product is draft version 0.6.14

JUANITA ARCH, CO
2013

ADJOINING 7.5 QUADRANGLES