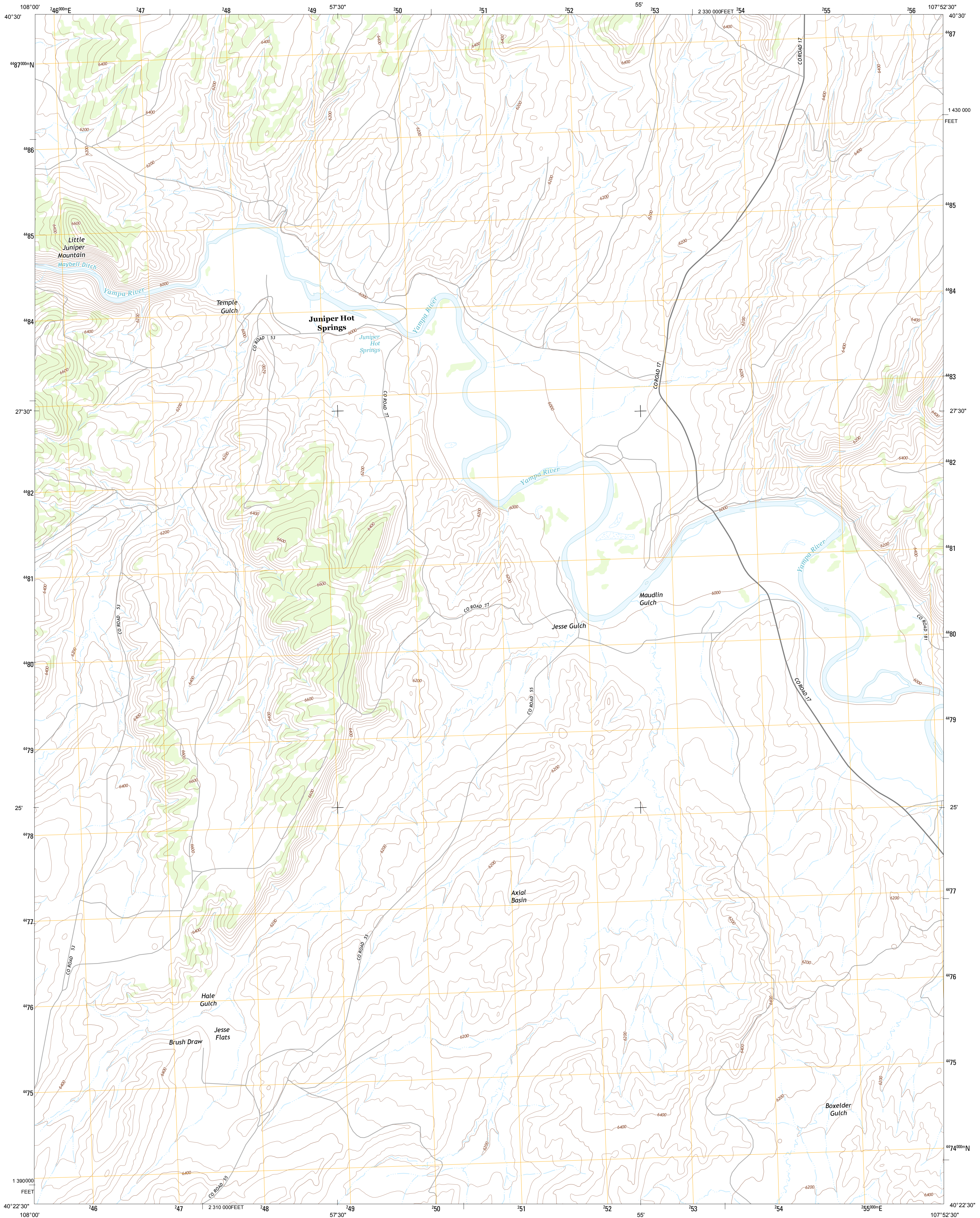




U.S. DEPARTMENT OF THE INTERIOR
U. S. GEOLOGICAL SURVEY

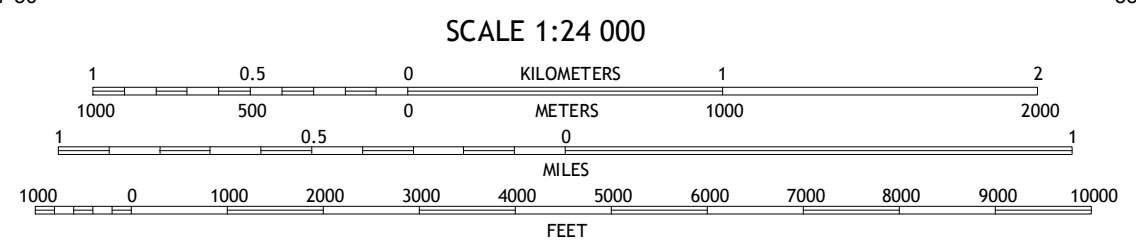
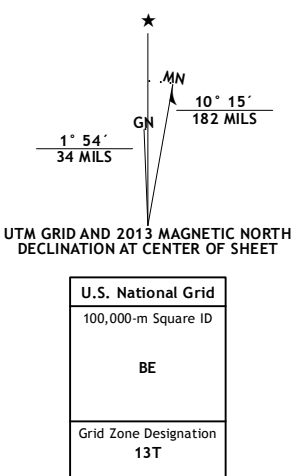


JUNIPER HOT SPRINGS QUADRANGLE
COLORADO-MOFFAT CO.
7.5-MINUTE SERIES

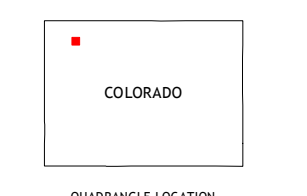


Produced by the United States Geological Survey
North American Datum of 1983 (NAD83)
World Geodetic System of 1984 (WGS84). Projection and
1 000-meter grid: Universal Transverse Mercator, Zone 13T
10 000-foot ticks: Colorado Coordinate System of 1983 (north
zone)

Imagery.....NAIP, July 2011
Roads.....©2006-2012 TomTom
Names.....GNIS, 2013
Hydrography.....National Hydrography Dataset, 2011
Contours.....National Elevation Dataset, 2004
Boundaries.....Census, IBW, IBC, USGS, 1972-2012
Public Land Survey System.....BLM, 2011

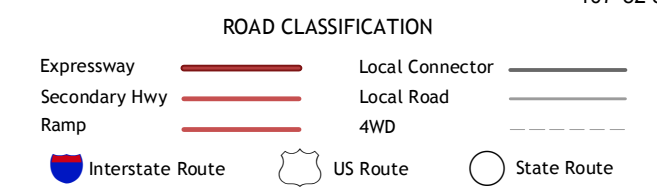


SCALE 1:24 000
CONTOUR INTERVAL 40 FEET
NORTH AMERICAN VERTICAL DATUM OF 1988
This map was produced to conform with the
National Geospatial Program US Topo Product Standards, 2011.
A metadata file associated with this product is draft version 0.6.14



QUADRANGLE LOCATION

Maybell	Lay	Lay SE
Juniper Mountain	Juniper Hot Springs	Horse Gulch
Price Creek	Easton Gulch	Axial



JUNIPER HOT SPRINGS, CO
2013

ADJOINING 7.5' QUADRANGLES