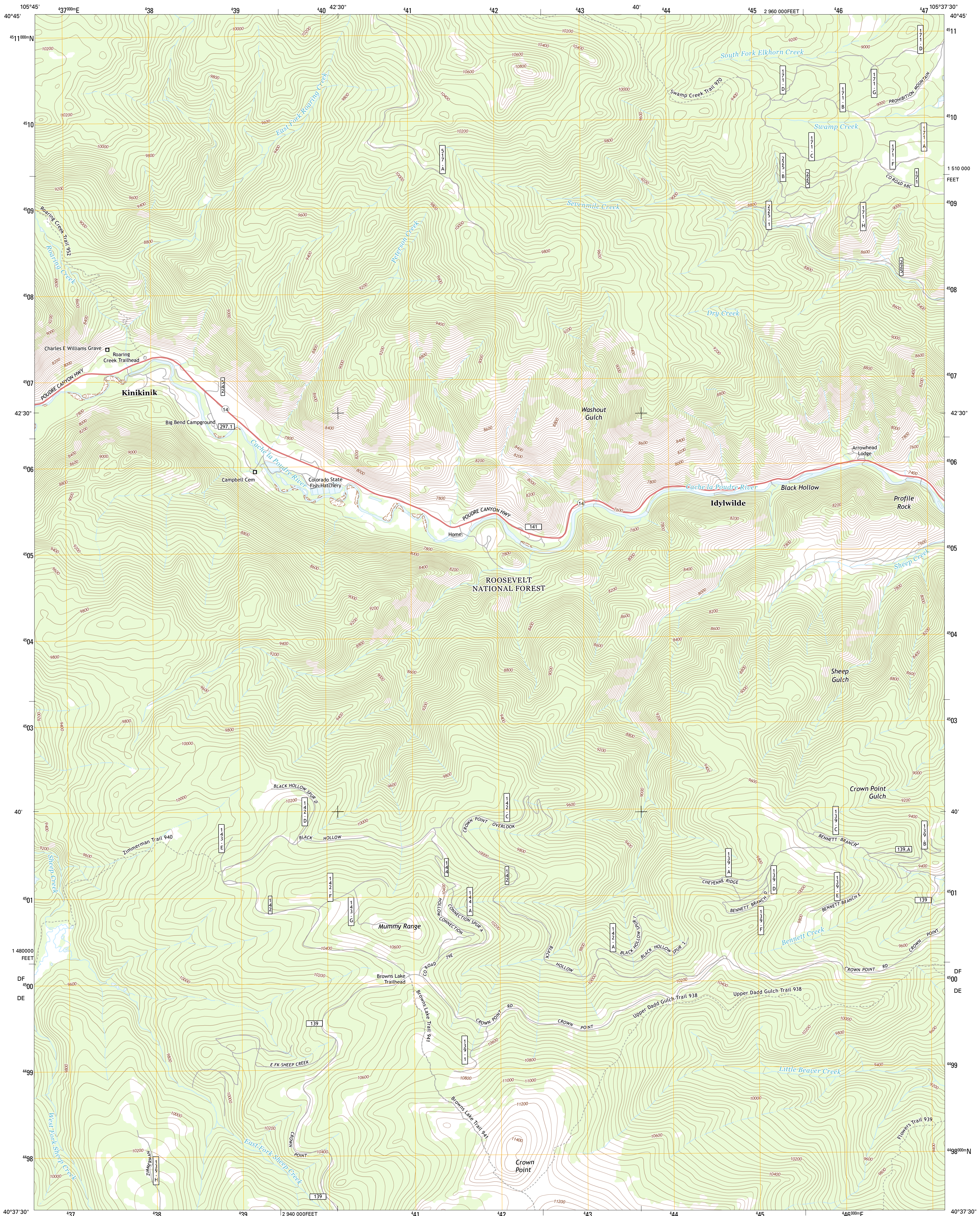




U.S. DEPARTMENT OF THE INTERIOR  
U. S. GEOLOGICAL SURVEY

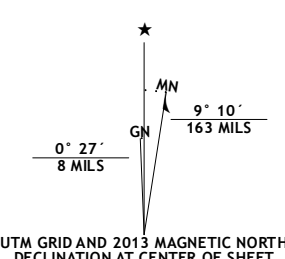


KINIKINIK QUADRANGLE  
COLORADO-LARIMER CO.  
7.5-MINUTE SERIES

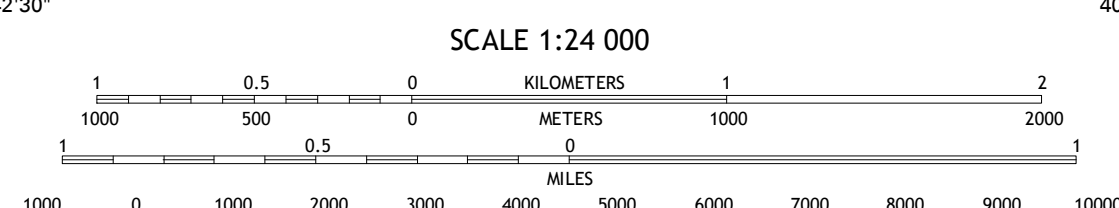


Produced by the United States Geological Survey  
North American Datum of 1983 (NAD83)  
World Geodetic System of 1994 (WGS84). Projection and  
1 000-meter grid: Universal Transverse Mercator, Zone 13T  
10 000-foot ticks: Colorado Coordinate System of 1983 (north  
zone)

Imagery.....NAIP, August 2011  
Roads.....©2006-2012 TomTom  
Roads within US Forest Service Lands  
with limited Forest Service updates, 2013  
Names.....GNIS, 2013  
Hydrography.....National Hydrography Dataset, 2011  
Contours.....National Elevation Dataset, 2001  
Boundaries.....Census, IBC, USGS, 1972 - 2012  
Public Land Survey System.....BLM, 2011



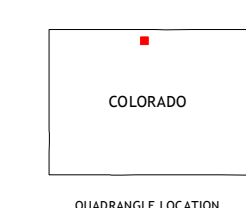
U.S. National Grid	8° 10'
100,000-m Square ID	
DF	4900
DE	
Grid Zone Designation	13T



SCALE 1:24 000

CONTOUR INTERVAL 40 FEET  
NORTH AMERICAN VERTICAL DATUM OF 1988

This map was produced to conform with the  
National Geospatial Program US Topo Product Standard, 2011.  
A metadata file associated with this product is draft version 0.6.14



Deadman Peak	South Bald Mountain	Red Feather Lakes
Boston Peak	Kinikik	Rustic
Chambers Lake	Comanche Peak	Pigree Park

**ROAD CLASSIFICATION**

- Expressway
- Secondary Hwy
- Ramp
- Interstate Route
- FS Primary Route
- Local Connector
- Local Road
- 4WD
- US Route
- FS Passenger Route
- State Route
- FS High Clearance Route

Check with local Forest Service unit  
for current travel conditions and restrictions.

KINIKINIK, CO  
2013

ADJOINING 7.5' QUADRANGLES