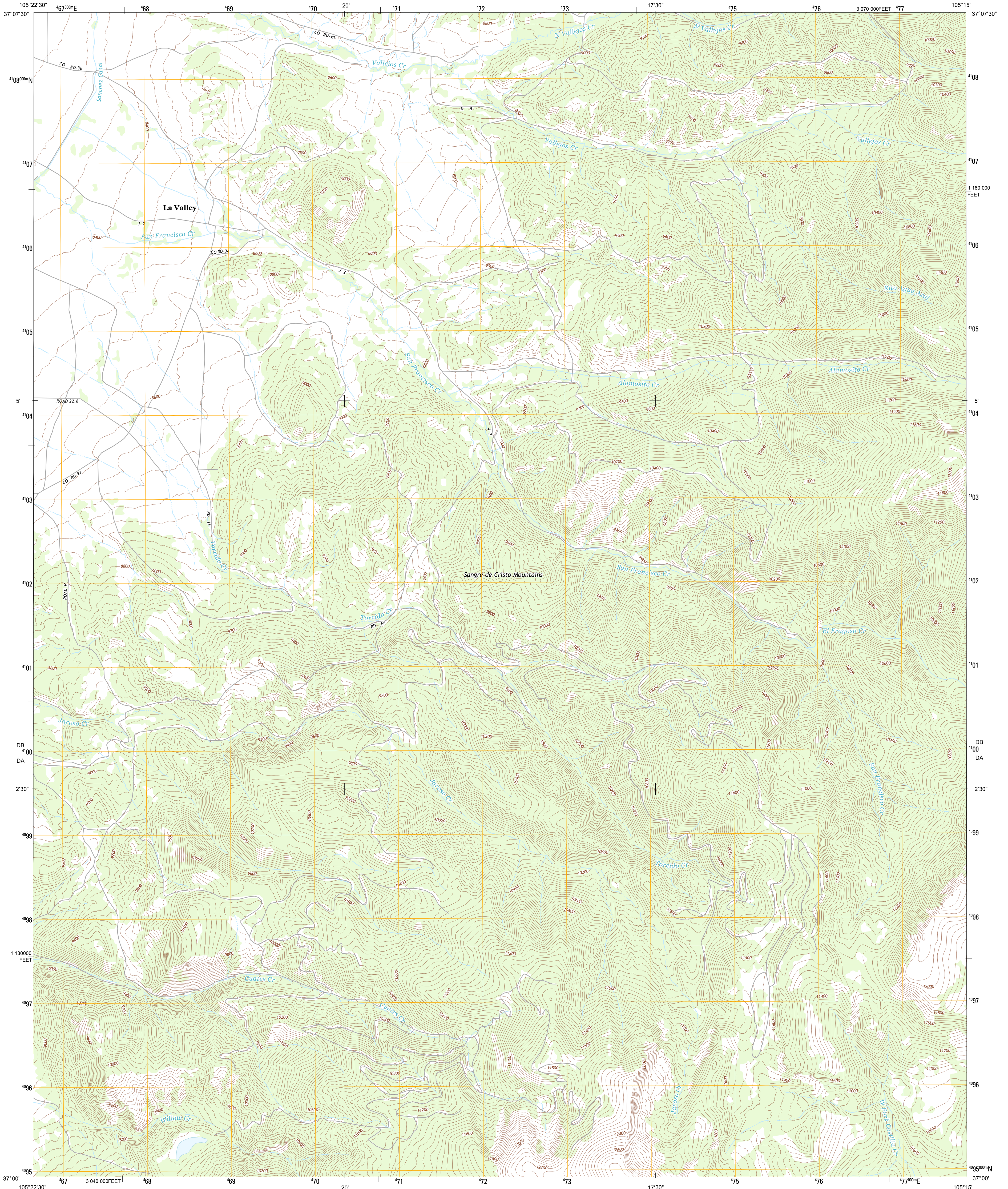




U.S. DEPARTMENT OF THE INTERIOR  
U. S. GEOLOGICAL SURVEY

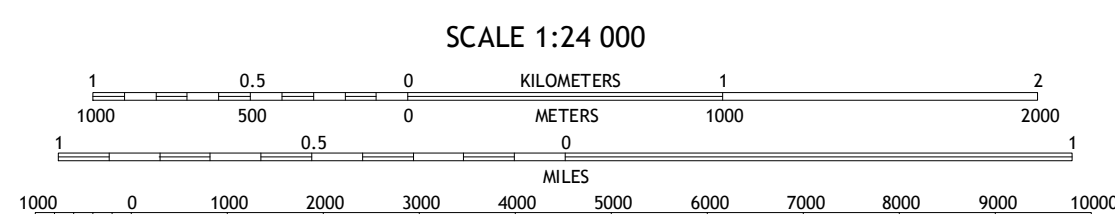
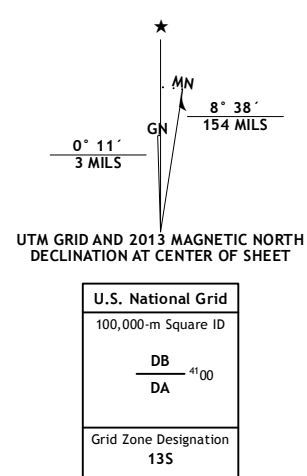


LA VALLEY QUADRANGLE  
COLORADO-COSTILLA CO.  
7.5-MINUTE SERIES



Produced by the United States Geological Survey  
North American Datum of 1983 (NAD83)  
World Geodetic System of 1984 (WGS84). Projection and  
1 000-meter grid: Universal Transverse Mercator, Zone 13S  
10 000-foot ticks: Colorado Coordinate System of 1983 (south  
zone)

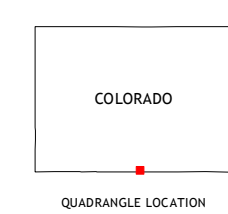
Imagery.....NAP, September 2011  
Roads.....©2006-2012 TomTom  
Names.....GNIS, 2013  
Hydrography.....National Hydrography Dataset, 2011  
Contours.....National Elevation Dataset, 2012  
Boundaries.....Census, IBWC, IBC, USGS, 1972- 2012  
Public Land Survey System.....BLM, 2011



SCALE 1:24 000

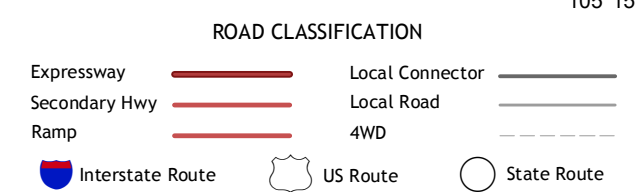
CONTOUR INTERVAL 40 FEET  
NORTH AMERICAN VERTICAL DATUM OF 1988

This map was produced to conform with the  
National Geospatial Program US Topo Product Standard, 2011.  
A metadata file associated with this product is draft version 0.6.14



QUADRANGLE LOCATION

San Luis	Taylor Ranch	El Valle Creek
Sanchez Reservoir	La Valley	Culebra Peak
Amalia	Big Costilla Peak	The Wall



LA VALLEY, CO  
2013

ADJOINING 7.5 QUADRANGLES