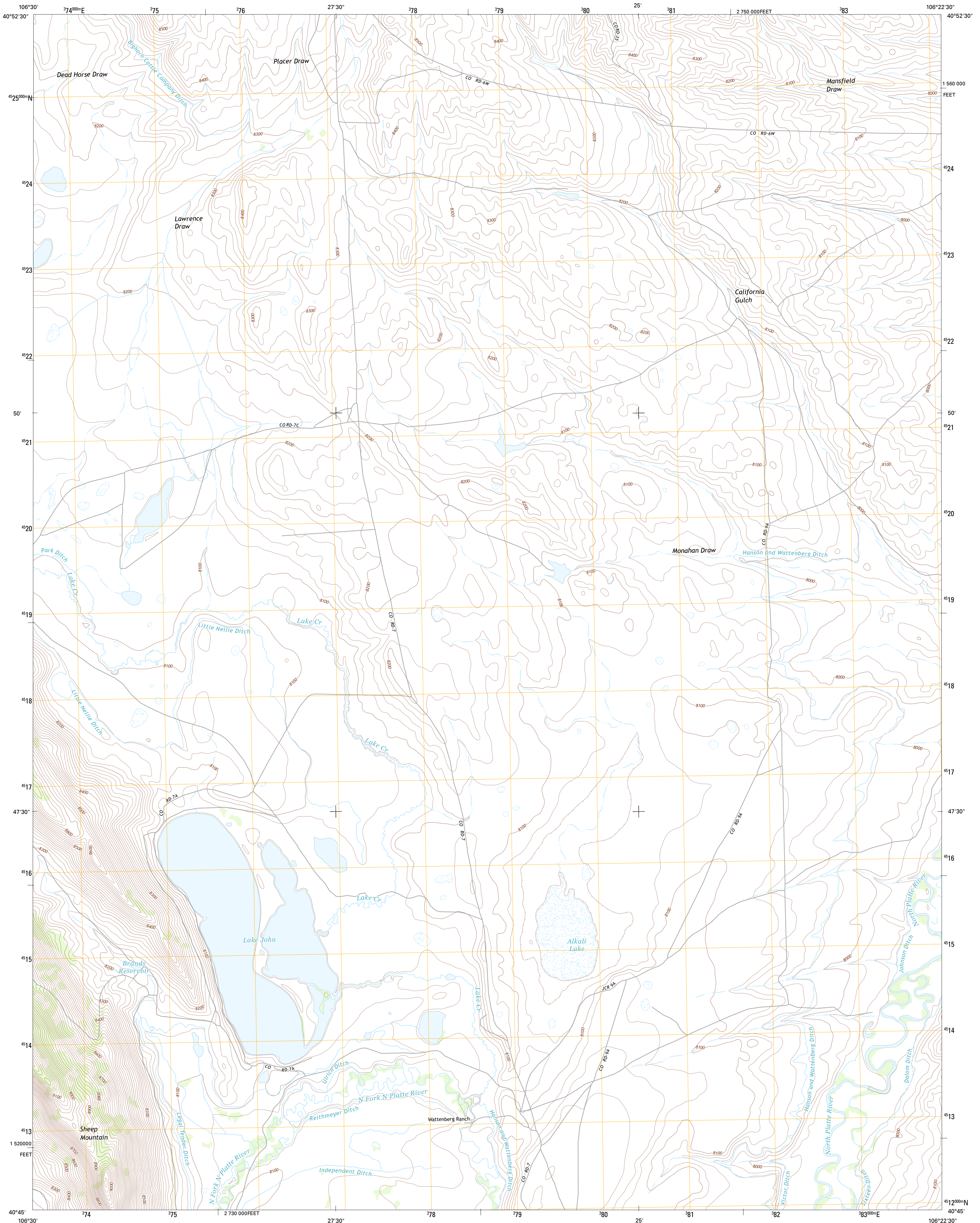




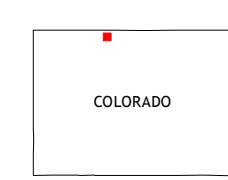
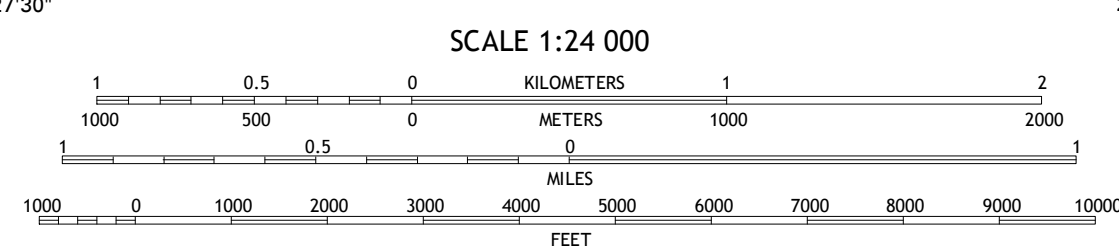
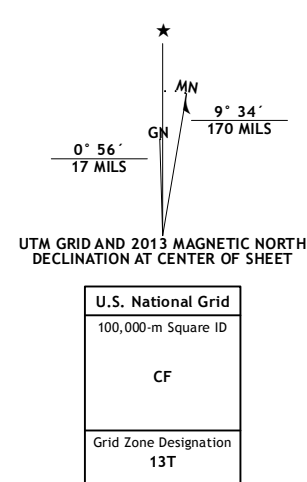
U.S. DEPARTMENT OF THE INTERIOR
U. S. GEOLOGICAL SURVEY



LAKE JOHN QUADRANGLE
COLORADO-JACKSON CO.
7.5-MINUTE SERIES



Produced by the United States Geological Survey
North American Datum of 1983 (NAD83)
World Geodetic System of 1984 (WGS84) Projection and
1 000-meter grid: Universal Transverse Mercator, Zone 13T
10 000-foot ticks: Colorado Coordinate System of 1983 (north zone)



ROAD CLASSIFICATION

Expressway
Secondary Hwy
Ramp
Interstate Route

Local Connector
Local Road
4WD
US Route
State Route

QUADRANGLE LOCATION

Pearl	Independence Mountain	Northgate
Boettcher Lake	Lake John	Cowdrey
Pitchpine Mountain	Delaney Butte	Walden

Imagery.....NAIP, July 2011 - August 2011
Roads.....©2006-2012 TomTom
Names.....©2013 GNS, 2013
Hydrography.....National Hydrography Dataset, 2011
Contours.....National Elevation Dataset, 2005
Boundaries.....Census, BWC, BC, USGS, 1972 - 2012
Public Land Survey System.....BLM, 2011

CONTOUR INTERVAL 20 FEET
NORTH AMERICAN VERTICAL DATUM OF 1988

This map was produced to conform with the National Geospatial Program US Topo Product Standard, 2011. A metadata file associated with this product is draft version 0.6.14

LAKE JOHN, CO
2013

ADJOINING 7.5 QUADRANGLES