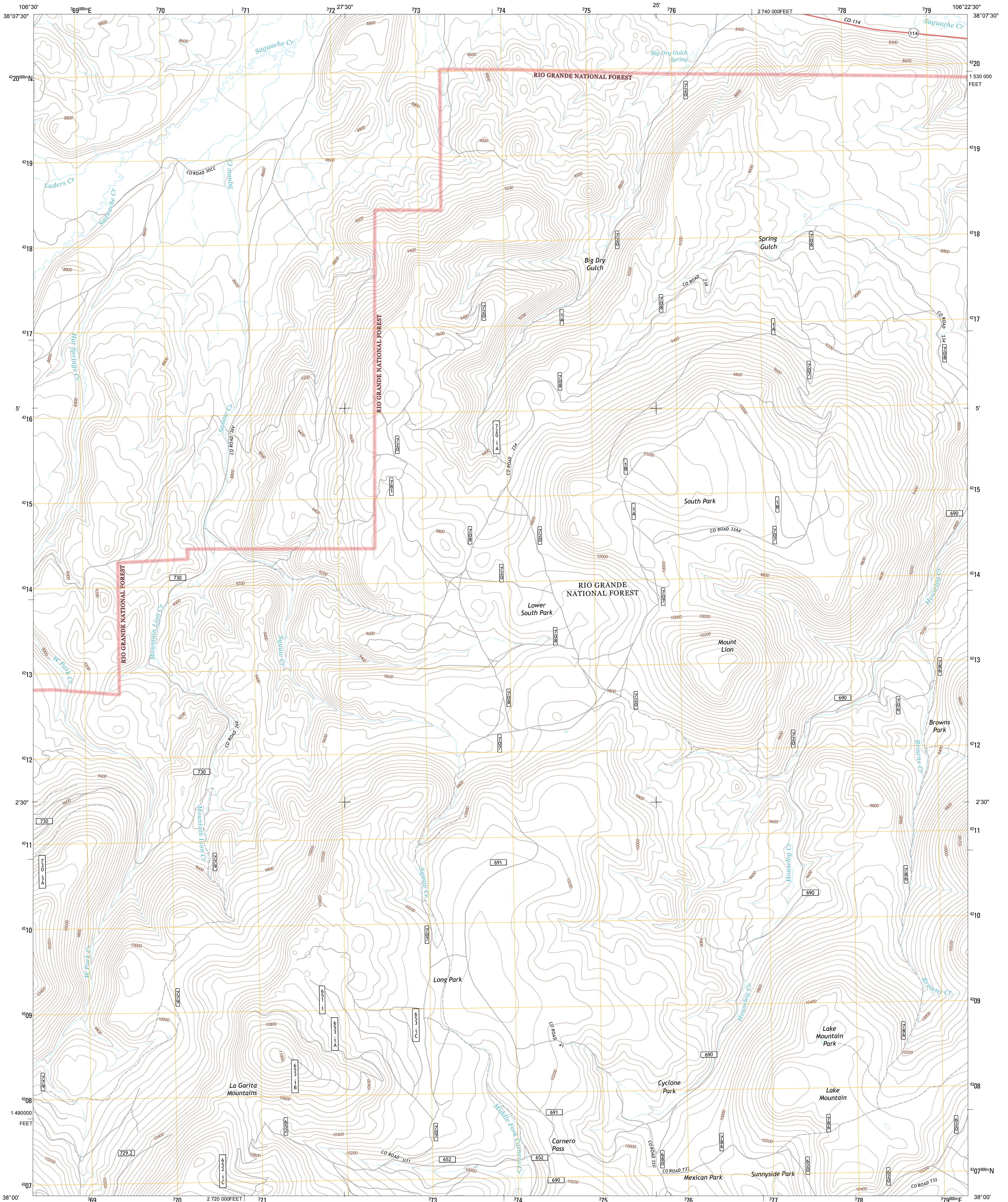




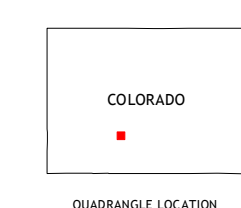
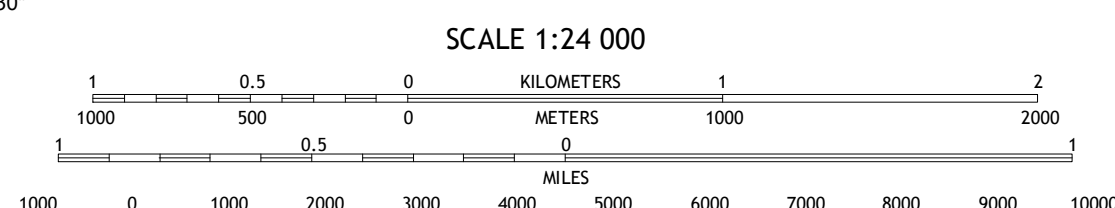
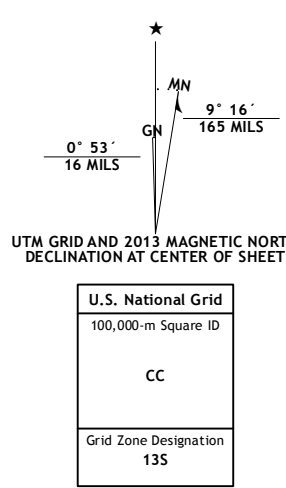
U.S. DEPARTMENT OF THE INTERIOR
U. S. GEOLOGICAL SURVEY



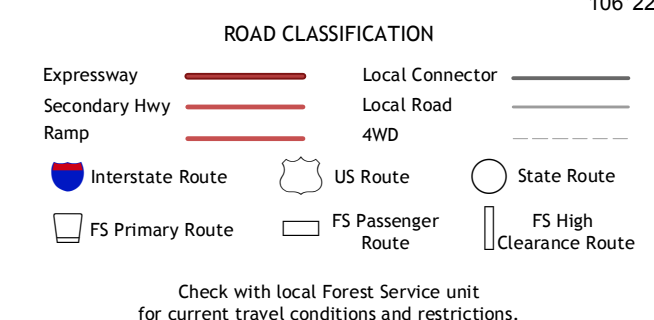
LAKE MOUNTAIN QUADRANGLE
COLORADO-SAGUACHE CO.
7.5-MINUTE SERIES



Produced by the United States Geological Survey
North American Datum of 1983 (NAD83)
World Geodetic System of 1984 (WGS84). Projection and
1 000-meter grid: Universal Transverse Mercator, Zone 13S
10 000-foot ticks: Colorado Coordinate System of 1983 (south
zone)



North Pass	Trickle Mountain	Lake Mountain NE
Grouse Creek	Lake Mountain	Laughlin Gulch
Bowers Peak	Lookout Mountain	Lime Creek



Check with local Forest Service unit for current travel conditions and restrictions.

Imagery.....NAIP, August 2011 - September 2011
Roads.....2006-2012 TomTom
Roads within US Forest Service Lands.....FS Topo Data
with limited Forest Service updates, 2013
Names.....GNIS, 2013
Hydrography.....National Hydrography Dataset, 2011
Contours.....National Elevation Dataset, 2001
Boundaries.....Census, IBWC, IBC, USGS, 1972 - 2012
Public Land Survey System.....BLM, 2011

CONTOUR INTERVAL 40 FEET
NORTH AMERICAN VERTICAL DATUM OF 1988

This map was produced to conform with the
National Geospatial Program US Topo Product Standard, 2011.
A metadata file associated with this product is draft version 0.6.14

LAKE MOUNTAIN, CO
2013

ADJOINING 7.5 QUADRANGLES