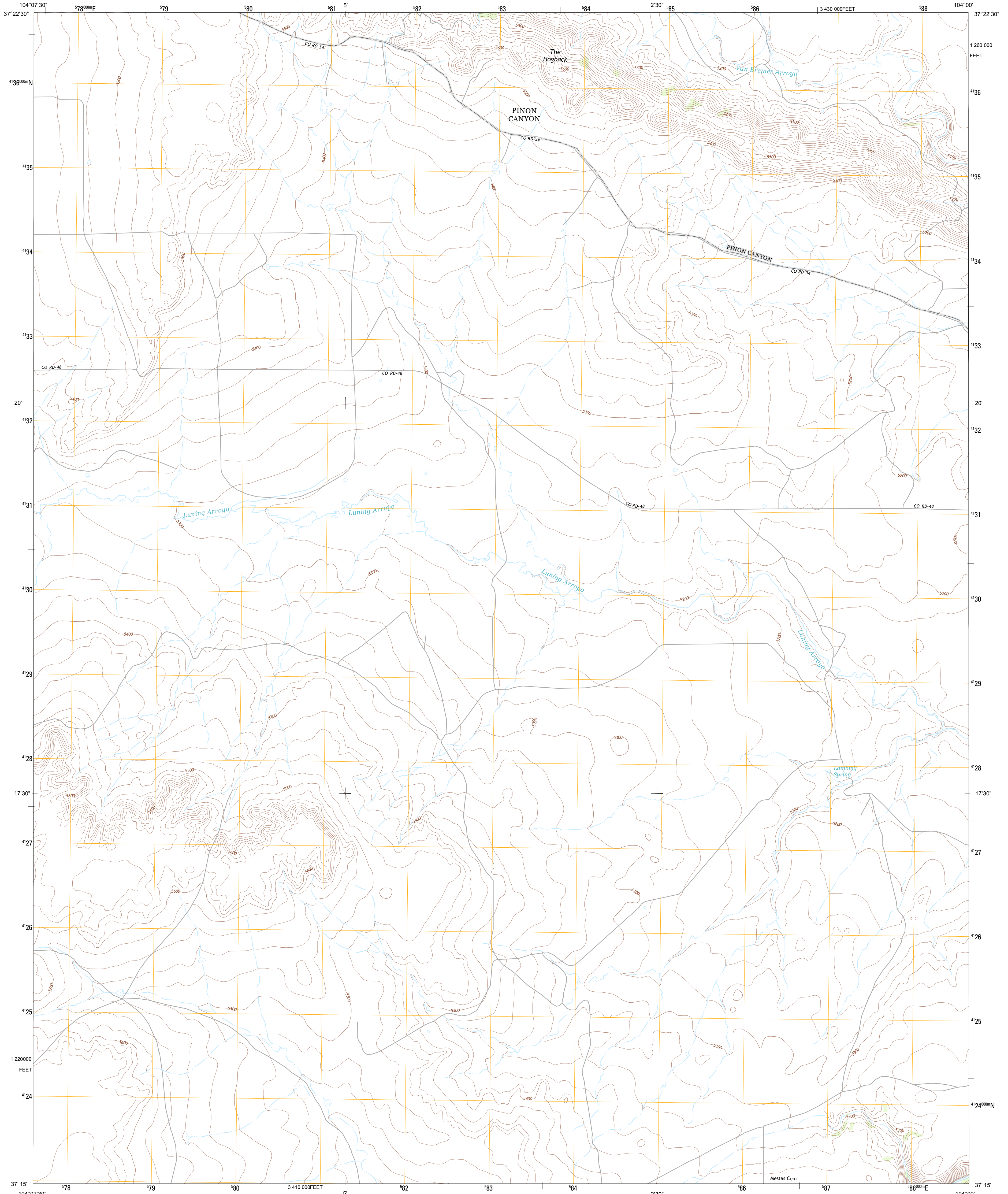




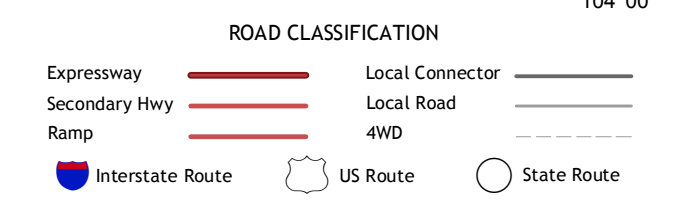
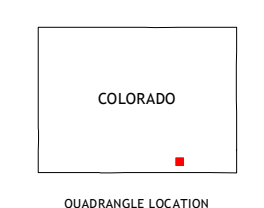
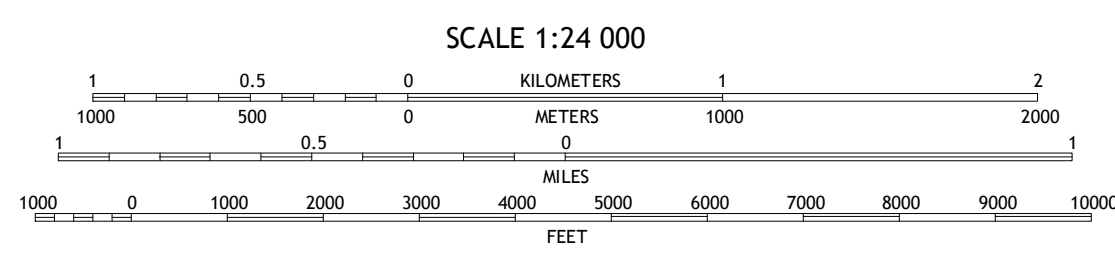
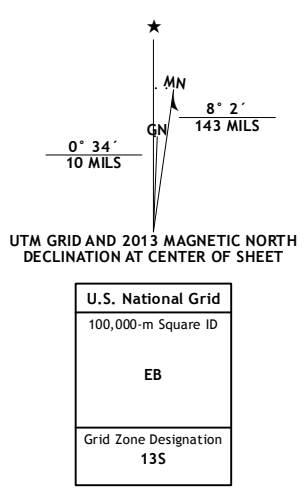
U.S. DEPARTMENT OF THE INTERIOR
U. S. GEOLOGICAL SURVEY



LAMBING SPRING QUADRANGLE
COLORADO-LAS ANIMAS CO.
7.5-MINUTE SERIES



Produced by the United States Geological Survey
North American Datum of 1983 (NAD83)
World Geodetic System of 1984 (WGS84). Projection and
1 000-meter grid: Universal Transverse Mercator, Zone 13S
10 000-foot ticks: Colorado Coordinate System of 1983 (south
zone)



Tyrone	Brown Sheep Camp	Rock Crossing
Model	Lambing Spring	Painted Canyon
Patterson Crossing	Purgatoire Canyon	Tremontina Canyon

CONTOUR INTERVAL 20 FEET
NORTH AMERICAN VERTICAL DATUM OF 1988

This map was produced to conform with the
National Geospatial Program US Topo Product Standard, 2011.
A metadata file associated with this product is draft version 0.6.14

LAMBING SPRING, CO
2013

ADJOINING 7.5 QUADRANGLES