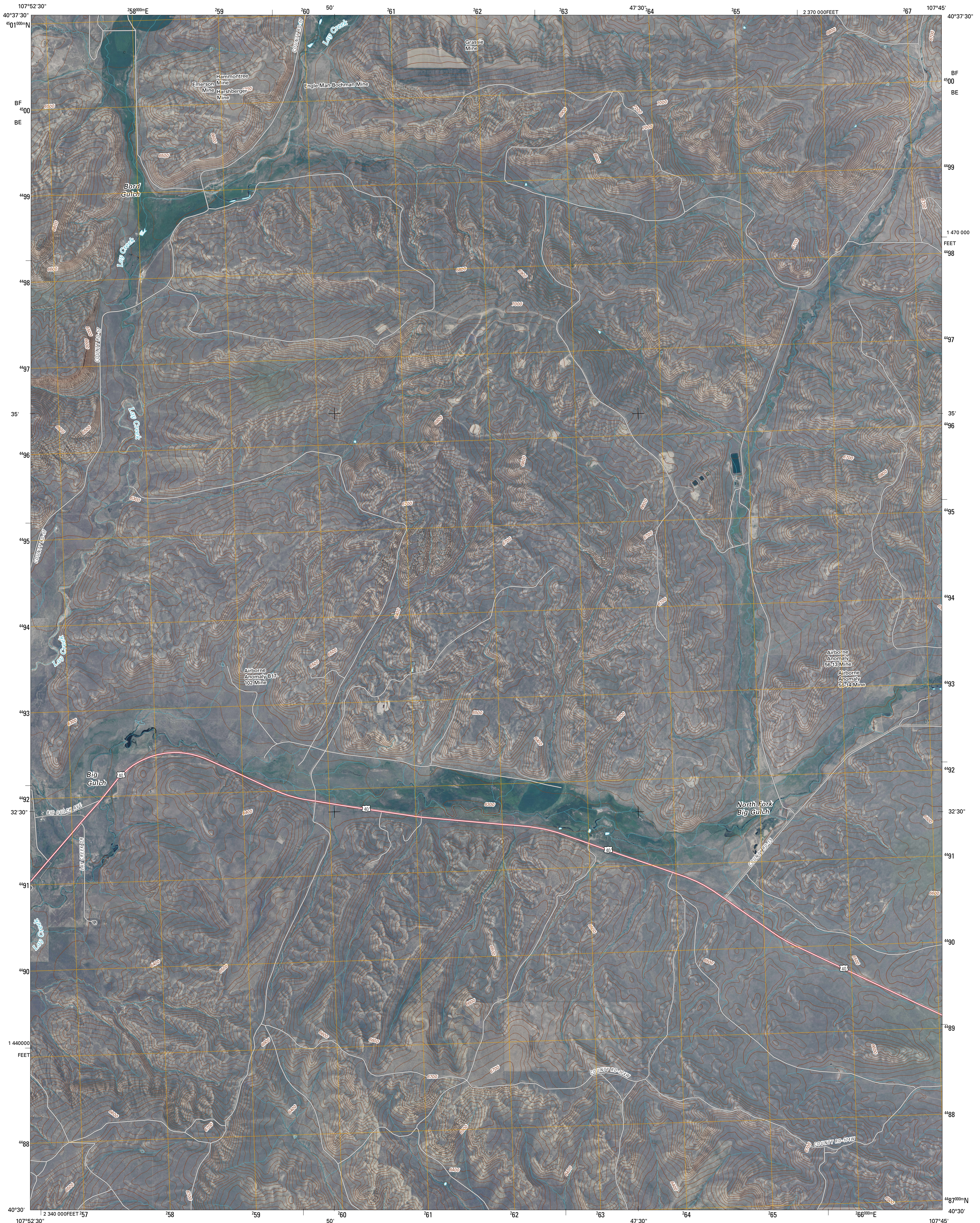




U.S. DEPARTMENT OF THE INTERIOR
U. S. GEOLOGICAL SURVEY

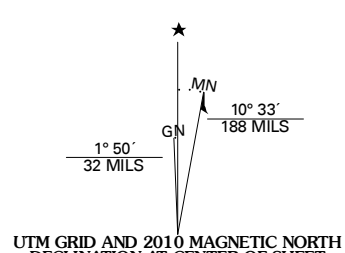


LAY SE QUADRANGLE
COLORADO
7.5-MINUTE SERIES

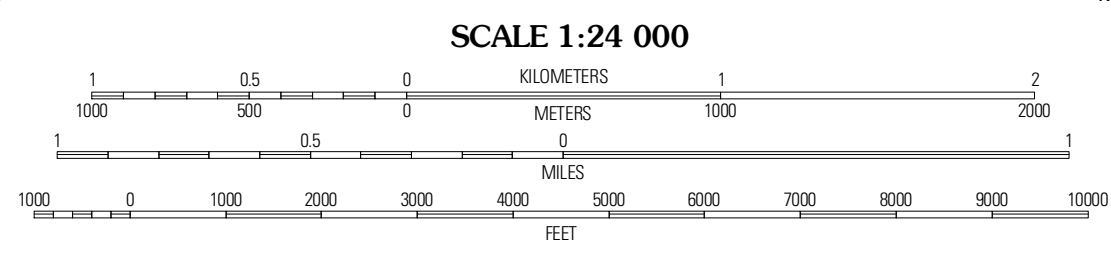


Produced by the United States Geological Survey
North American Datum of 1983 (NAD83)
World Geospatial System of 1984 (WGS84). Projection and
1 000-meter grid, Universal Transverse Mercator, Zone 13T
10 000-foot ticks: Colorado Coordinate System of 1983
(north zone)

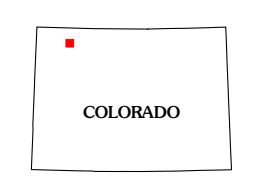
Imagery: N.A.I.P., June 2009
Roads: ©2006-2010 Tele Atlas
Names: ©2006-2010 Tele Atlas
Hydrography: National Hydrography Dataset, 2009
Contours: National Elevation Dataset, 2004



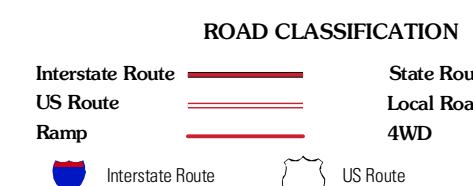
U.S. National Grid 100,000m Square ID
BF BE
Grid Zone Designation UT



CONTOUR INTERVAL 20 FEET
NORTH AMERICAN VERTICAL DATUM OF 1988
This map was produced to conform with version 0.5.10 of the
draft USGS Standards for 7.5-Minute Quadrangle Maps.
A metadata file associated with this product is draft version 0.5.11



QUADRANGLE LOCATION		
Adobe Springs	Iron Springs	Craig NW
Lay	Lay SE	Pin Ridge
Jasper Hot Springs	Horse Gulch	Round Bottom
ADJOINING 7.5' QUADRANGLES		



LAY SE, CO
2010