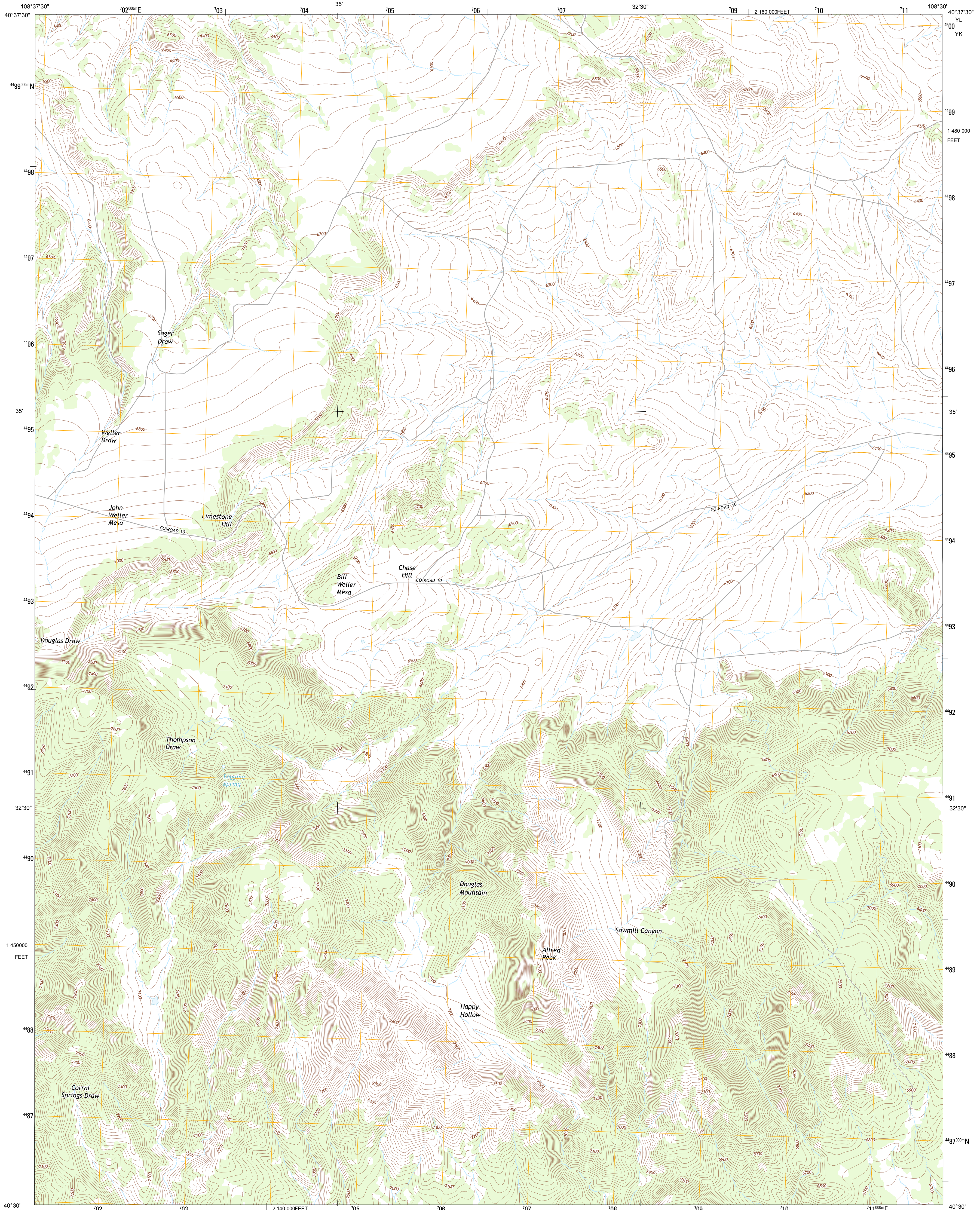




U.S. DEPARTMENT OF THE INTERIOR
U. S. GEOLOGICAL SURVEY

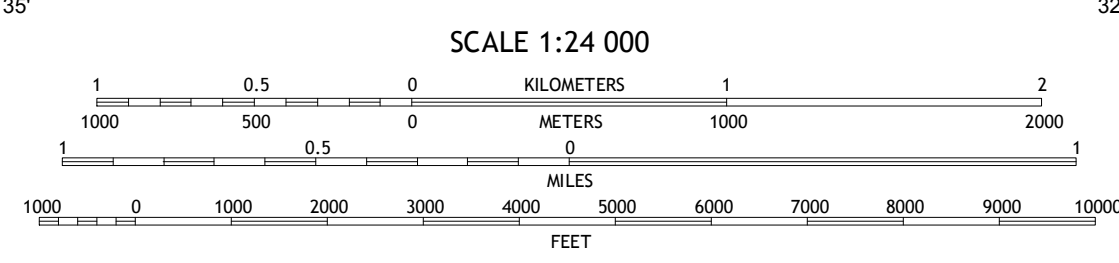
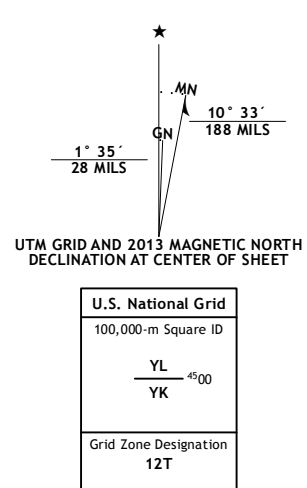


LIMESTONE HILL QUADRANGLE
COLORADO-MOFFAT CO.
7.5-MINUTE SERIES



Produced by the United States Geological Survey
North American Datum of 1983 (NAD83)
World Geodetic System of 1984 (WGS84), Projection and
1 000-meter grid: Universal Transverse Mercator, Zone 12T
10 000-foot ticks: Colorado Coordinate System of 1983 (north zone)

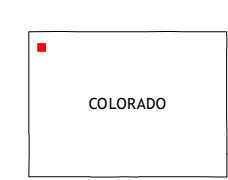
Imagery.....NAIP, July 2011
Roads.....©2006-2012 TomTom
Names.....©2013
Hydrography.....National Hydrography Dataset, 2011
Contours.....National Elevation Dataset, 2003
Boundaries.....Census, BGC, USGS, 1972-2012
Public Land Survey System.....BLM, 2011



SCALE 1:24 000

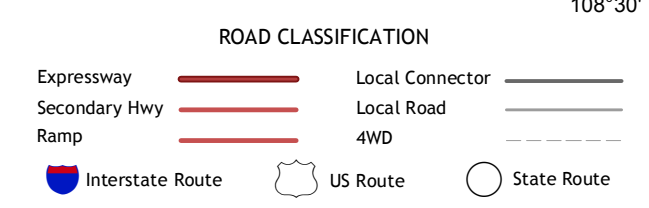
CONTOUR INTERVAL 20 FEET
NORTH AMERICAN VERTICAL DATUM OF 1988

This map was produced to conform with the
National Geospatial Program US Topo Product Standard, 2011.
A metadata file associated with this product is draft version 0.6.14



QUADRANGLE LOCATION

Vermillion Mesa	Sheephead Basin	Clay Buttes
Greystone	Limestone Hill	Lone Mountain
Haystack Rock	Indian Water Canyon	Twelvevite Mesa



LIMESTONE HILL, CO
2013

ADJOINING 7.5 QUADRANGLES