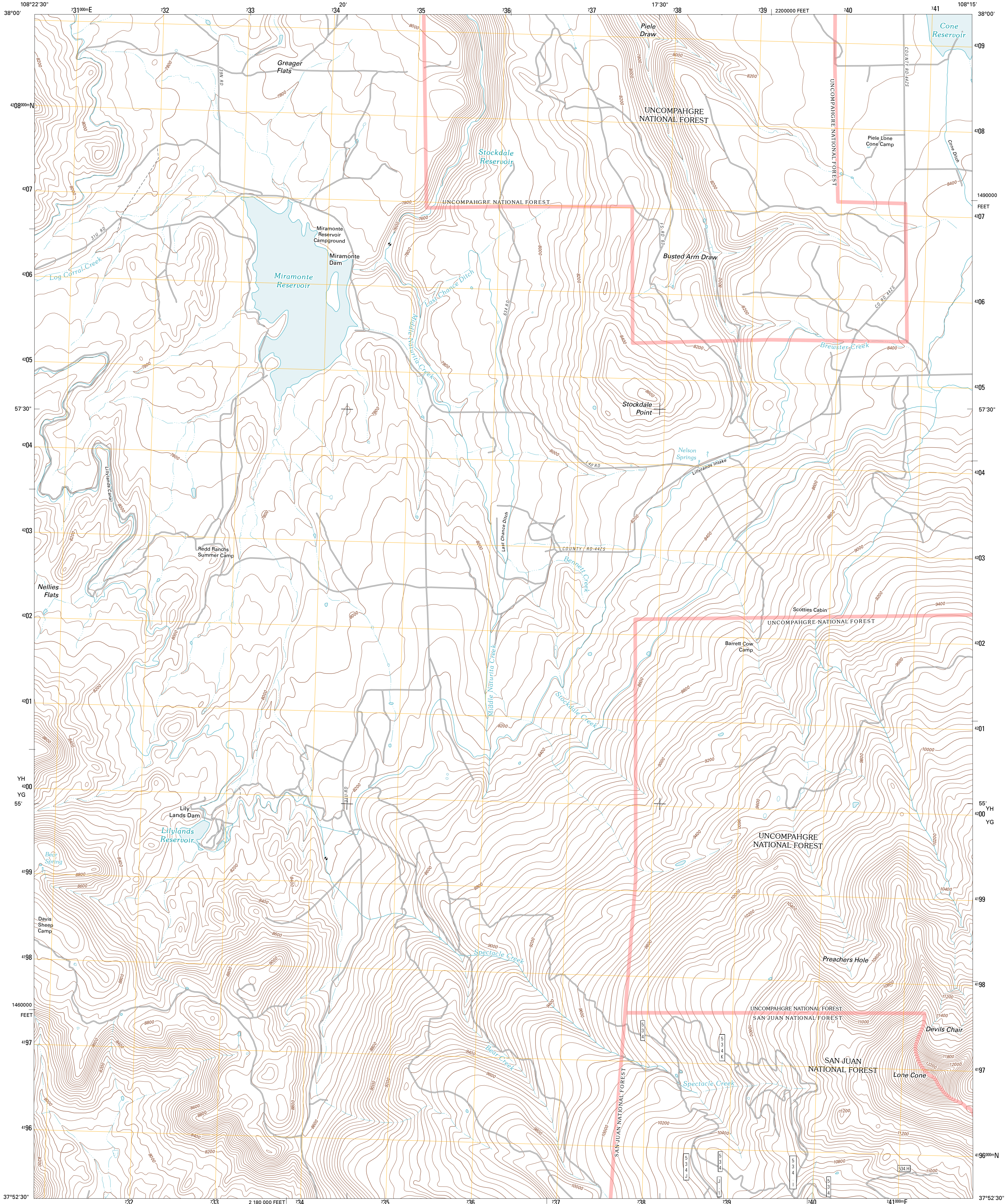




U.S. DEPARTMENT OF THE INTERIOR  
U. S. GEOLOGICAL SURVEY

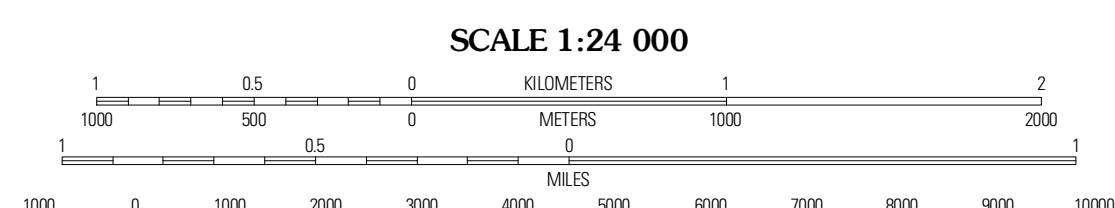
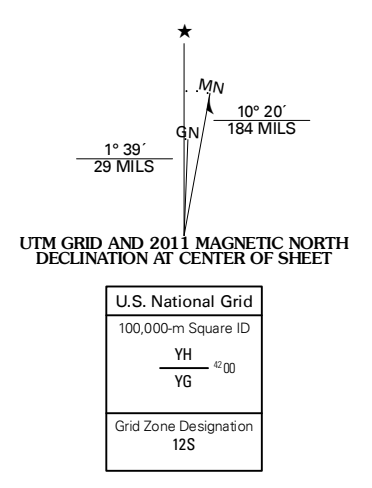


LONE CONE QUADRANGLE  
COLORADO  
7.5-MINUTE SERIES



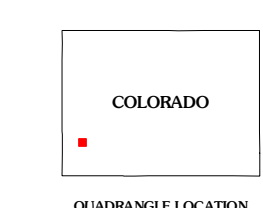
Produced by the United States Geological Survey  
North American Datum of 1983 (NAD83)  
World Geodetic System of 1984 (WGS84). Projection and  
1 000-meter grid. Universal Transverse Mercator, Zone 12S  
10 000-foot ticks. Colorado Coordinate System of 1983  
(south zone)

Imagery.....NAP, July 2009  
Roads.....©2006-2010 Tele Atlas  
Roads within US Forest Service Lands.....FSTopo Data  
with limited Forest Service updates, 2009  
Names.....GNIS, 2010  
Hydrography.....National Hydrography Dataset, 2009  
Contours.....National Elevation Dataset, 2005



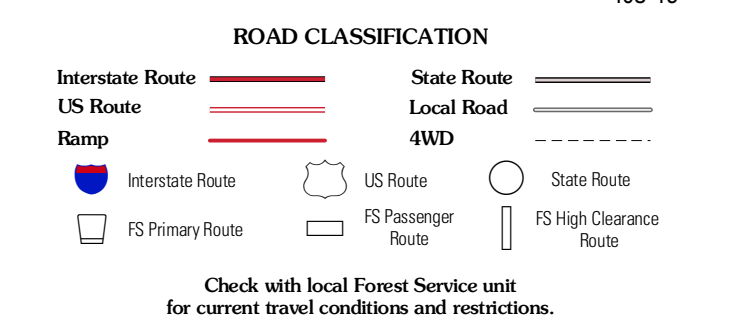
CONTOUR INTERVAL 40 FEET  
NORTH AMERICAN VERTICAL DATUM OF 1988

This map was produced to conform with version 0.5.10 of the  
draft USGS Standards for 7.5-Minute Quadrangle Maps.  
A metadata file associated with this product is draft version 0.5.12



Barlow Draw	Oak Hill	Gurley Canyon
North Mountain	Lone Cone	Beaver Park
South Mountain	Groundhog Reservoir	Groundhog Mountain

ADJOINING 7.5 QUADRANGLES



Check with local Forest Service unit  
for current travel conditions and restrictions.

LONE CONE, CO  
2011