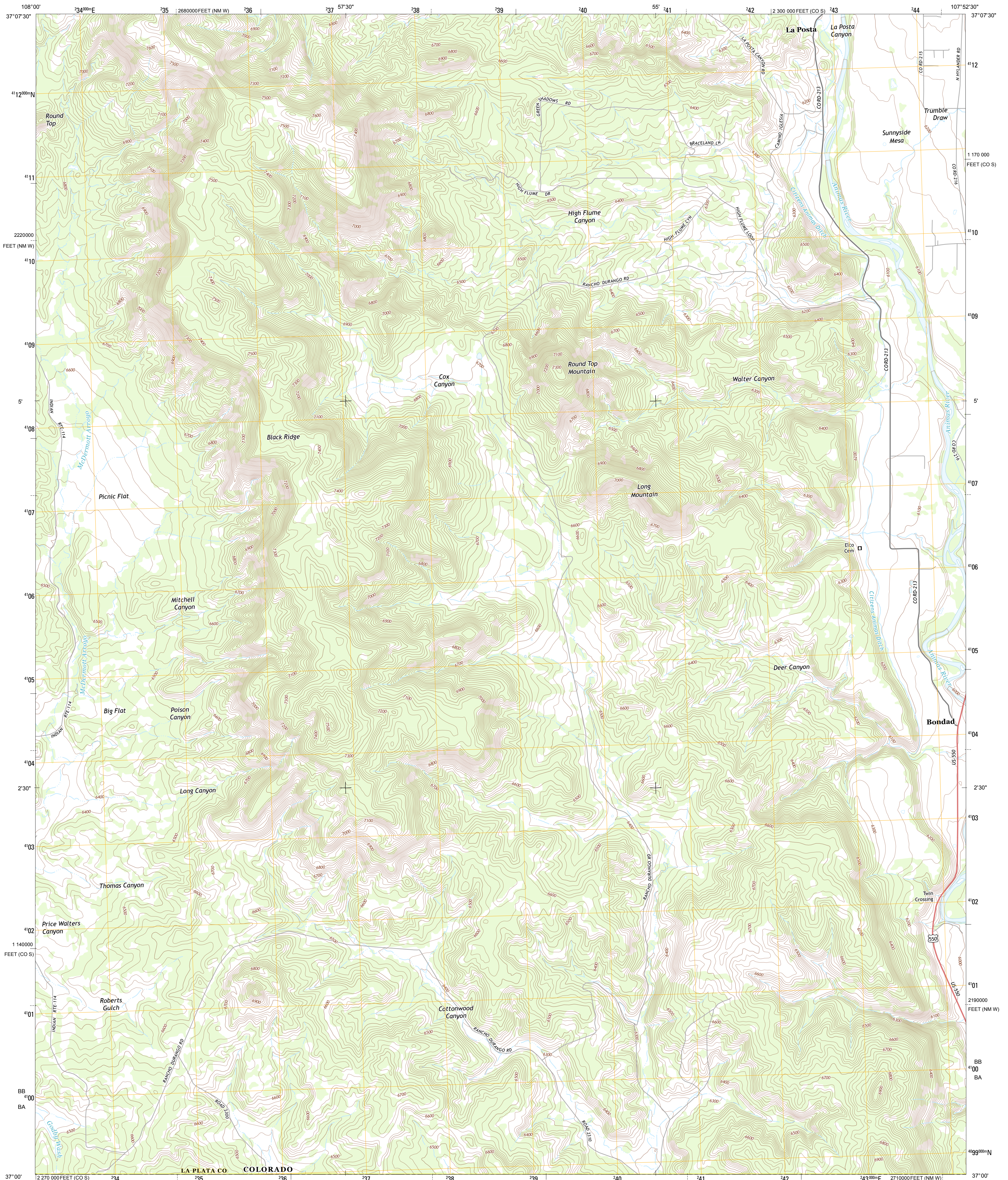




U.S. DEPARTMENT OF THE INTERIOR
U. S. GEOLOGICAL SURVEY

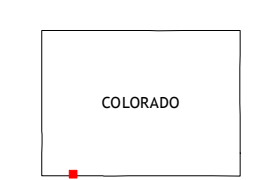
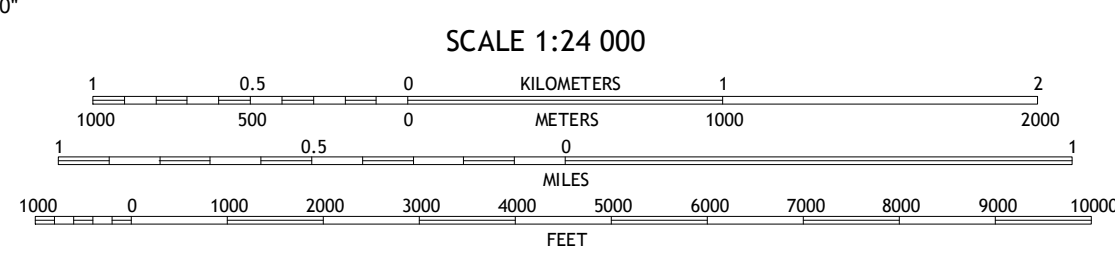
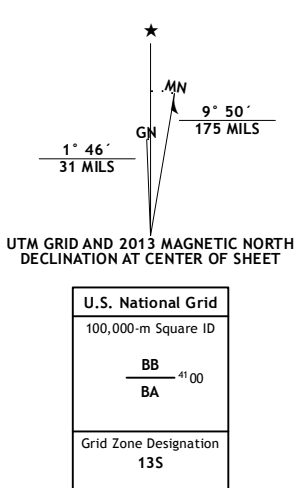


LONG MOUNTAIN QUADRANGLE
COLORADO-NEW MEXICO
7.5-MINUTE SERIES



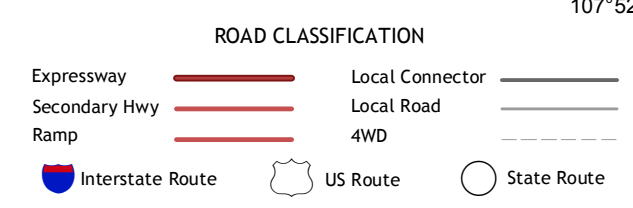
Produced by the United States Geological Survey
North American Datum of 1983 (NAD83)
World Geodetic System of 1984 (WGS84). Projection and
1:000-meter grid: Universal Transverse Mercator, Zone 13S
10 000-foot ticks: Colorado Coordinate System of 1983 (south
zone), New Mexico Coordinate System of 1983 (west zone)

Imagery.....NAIP, August 2011
Roads.....©2006-2012 TomTom
Names.....GNIS, 2013
Hydrography.....National Hydrography Dataset, 2011
Contours.....National Elevation Dataset, 2001
Boundaries, IRWC, BIC, USGS, 1972 - 2012
Public Land Survey System.....BLA, 2011



QUADRANGLE LOCATION

Kiline	Basin Mountain	Loma Linda
Prickerton Mesa	Long Mountain	Bondad Hill
Adobe Downs Ranch	Cedar Hill	Mount Nebo



CONTOUR INTERVAL 20 FEET
NORTH AMERICAN VERTICAL DATUM OF 1988
This map was produced to conform with the
National Geospatial Program US Topo Product Standard, 2011.
A metadata file associated with this product is draft version 0.6.14

LONG MOUNTAIN, CO-NM
2013

ADJOINING 7.5 QUADRANGLES