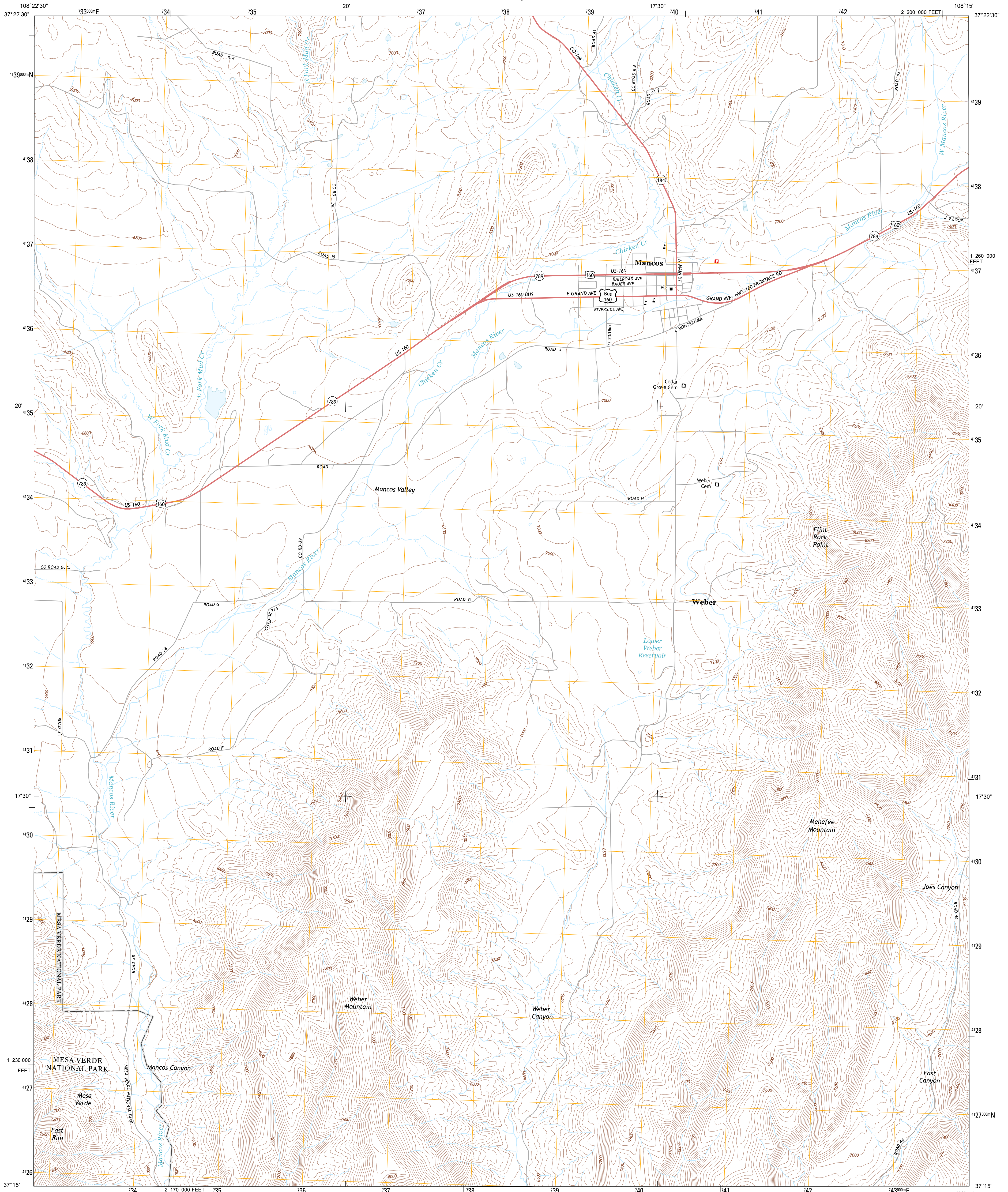




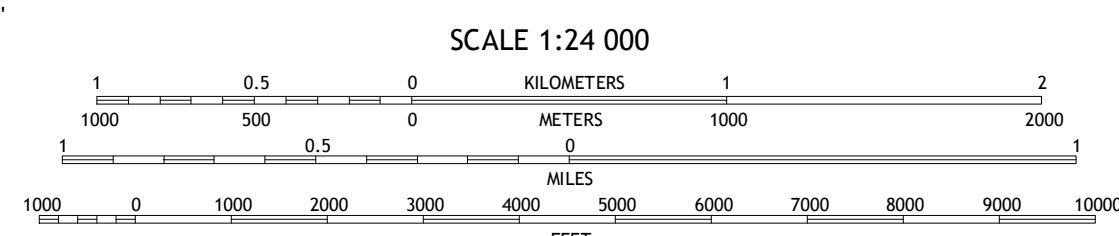
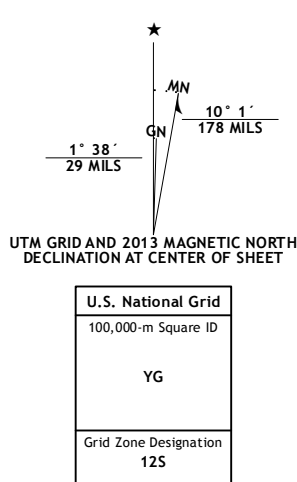
U.S. DEPARTMENT OF THE INTERIOR
U. S. GEOLOGICAL SURVEY



MANCOS QUADRANGLE
COLORADO-MONTEZUMA CO.
7.5-MINUTE SERIES

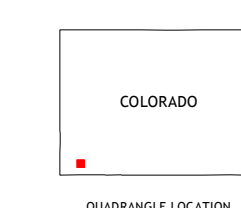


Produced by the United States Geological Survey
North American Datum of 1983 (NAD83)
World Geodetic System of 1984 (WGS84). Projection and
1:100,000 meter grid: Universal Transverse Mercator, Zone 12S
10,000-foot ticks: Colorado Coordinate System of 1983 (south zone)

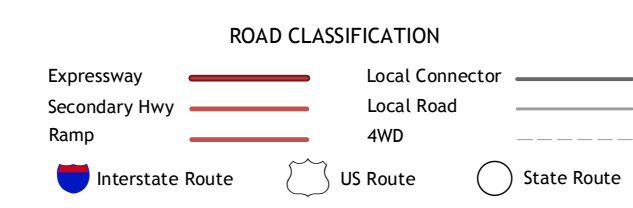


CONTOUR INTERVAL 40 FEET
NORTH AMERICAN VERTICAL DATUM OF 1988

This map was produced to conform with the
National Geospatial Program US Topo Product Standard, 2011.
A metadata file associated with this product is draft version 0.6.14



Dolores East	Millwood	Rampart Hills
Point Lookout	Mancos	Thompson Park
Moccasin Mesa	Trail Canyon	Mormon Reservoir



MANCOS, CO
2013

ADJOINING 7.5 QUADRANGLES