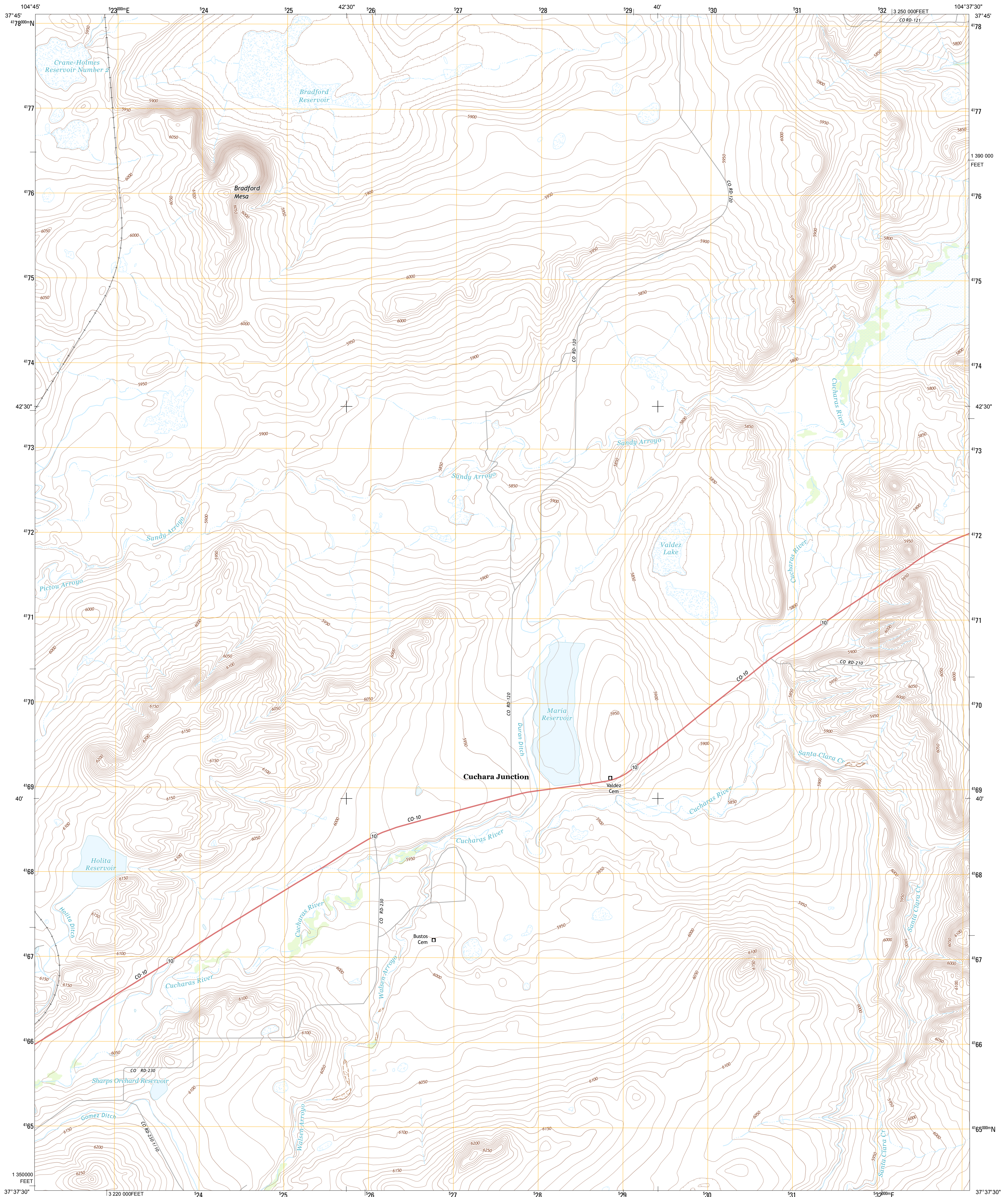




U.S. DEPARTMENT OF THE INTERIOR
U. S. GEOLOGICAL SURVEY



MARIA RESERVOIR QUADRANGLE
COLORADO-HUERFANO CO.
7.5-MINUTE SERIES

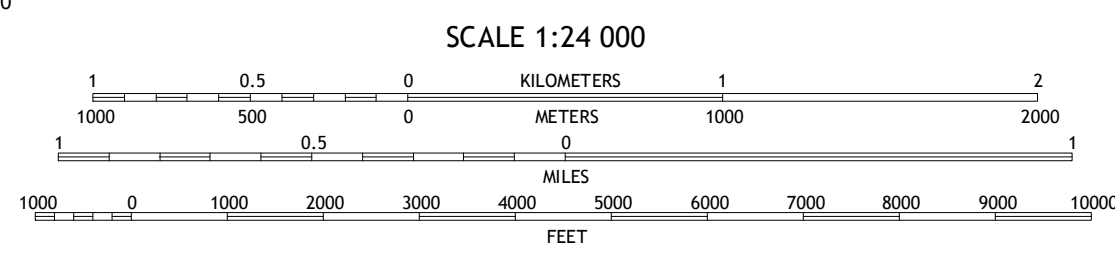


Produced by the United States Geological Survey
North American Datum of 1983 (NAD83)
World Geodetic System of 1984 (WGS84), Projection and
1 000-meter grid: Universal Transverse Mercator, Zone 13S
10 000-foot ticks: Colorado Coordinate System of 1983 (south zone)

Imagery.....NAIP, July 2011
Roads.....G2006-2012 TomTom
Names.....GNIS, 2013
Hydrography.....National Hydrography Dataset, 2011
Contours.....National Elevation Dataset, 2007
Boundaries.....Census, IBWC, USGS, 1972-2012
Public Land Survey System.....BLM, 2011

UTM GRID AND 2013 MAGNETIC NORTH DECLINATION AT CENTER OF SHEET

U.S. National Grid
100,000-m Square ID
EB
Grid Zone Designation
13S



CONTOUR INTERVAL 10 FEET
NORTH AMERICAN VERTICAL DATUM OF 1988

This map was produced to conform with the
National Geospatial Program US Topo Product Standard, 2011.
A metadata file associated with this product is draft version 0.6.14



QUADRANGLE LOCATION

Huerfano Butte	Lascaf	Capps Springs
Walsenburg North	Maria Reservoir	Cucharas Reservoir
Walsenburg South	Pryor	Pryor SE

ROAD CLASSIFICATION

- Expressway
- Secondary Hwy
- Ramp
- Interstate Route
- US Route
- State Route
- Local Connector
- Local Road
- 4WD

MARIA RESERVOIR, CO
2013

ADJOINING 7.5 QUADRANGLES