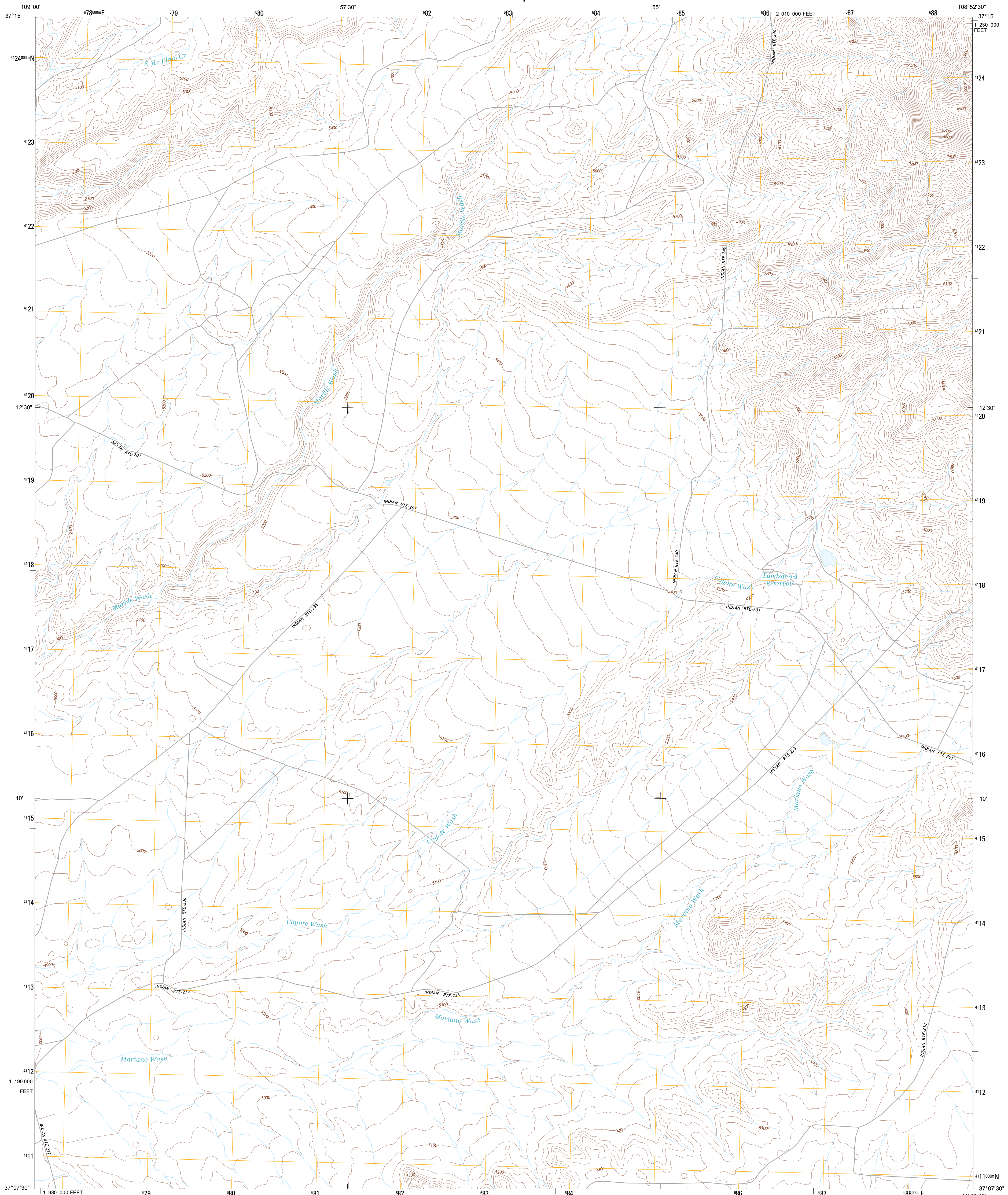




U.S. DEPARTMENT OF THE INTERIOR
U. S. GEOLOGICAL SURVEY

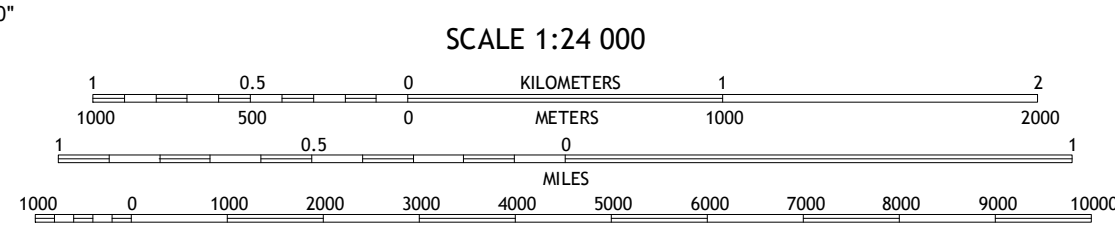
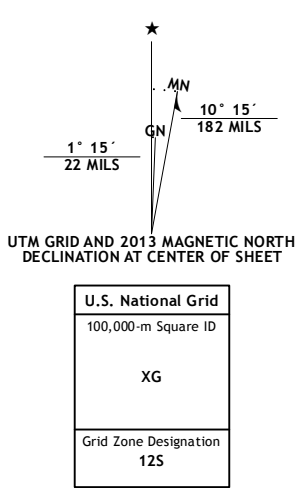


MARIANO WASH WEST QUADRANGLE
COLORADO-MONTEZUMA CO.
7.5-MINUTE SERIES

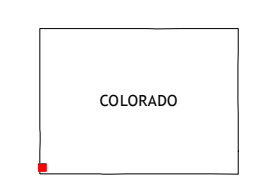


Produced by the United States Geological Survey
North American Datum of 1983 (NAD83)
World Geodetic System of 1984 (WGS84). Projection and
1 000-meter grid: Universal Transverse Mercator, Zone 12S
10 000-foot ticks: Colorado Coordinate System of 1983 (south
zone)

Imagery.....NAIP, July 2011
Roads.....©2006-2012 TomTom
Names.....GNIS, 2013
Hydrography.....National Hydrography Dataset, 2011
Contours.....National Elevation Dataset, 2005
Boundaries.....IRWC, IRIC, USGS, 1972 - 2012
Public Land Survey System.....BLM, 2011

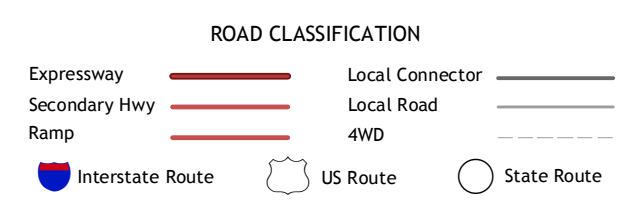


This map was produced to conform with the
National Geospatial Program US Topo Product Standard, 2011.
A metadata file associated with this product is draft version 0.6.14



QUADRANGLE LOCATION

Wickiup Canyon	Bowdish Canyon	Battle Rock
Peters Nipple	Mariano Wash West	Mariano Wash East
Yellow Rock Point East	Sentinel Peak SW	Sentinel Peak SE



MARIANO WASH WEST, CO
2013

ADJOINING 7.5 QUADRANGLES