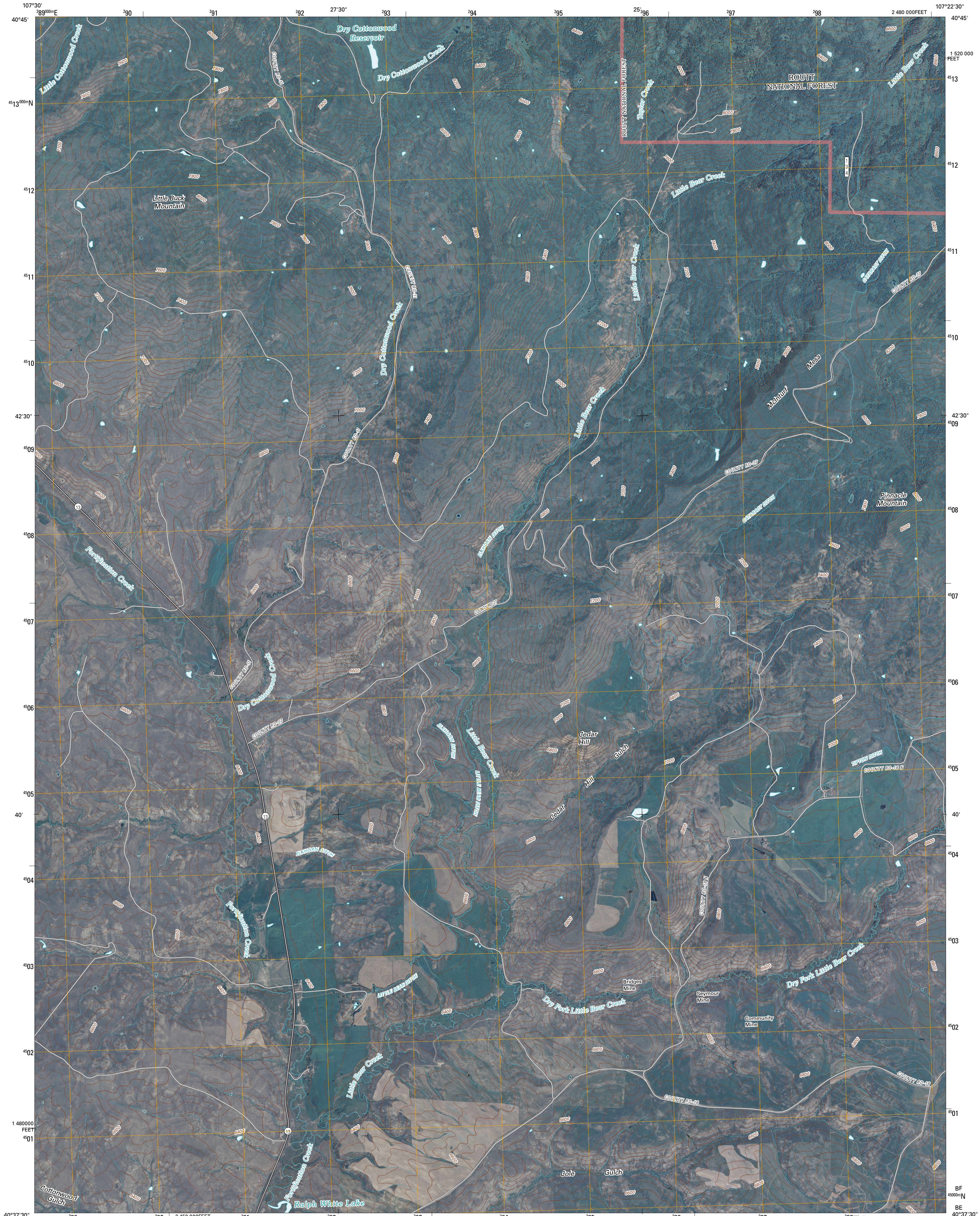




U.S. DEPARTMENT OF THE INTERIOR  
U. S. GEOLOGICAL SURVEY

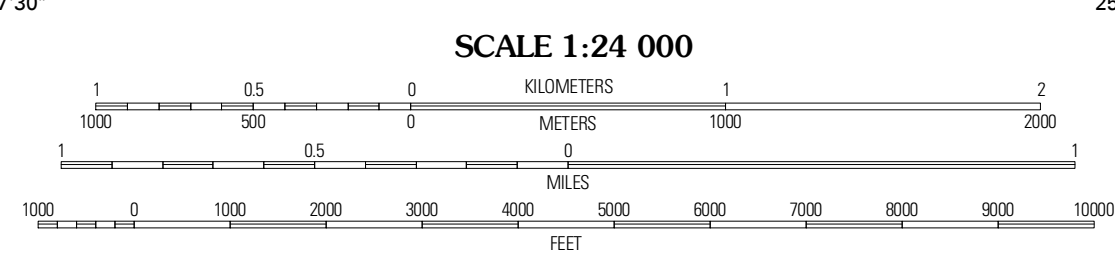
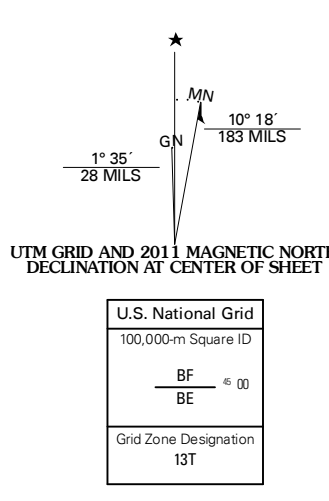


MCINTURF MESA QUADRANGLE  
COLORADO  
7.5-MINUTE SERIES



Produced by the United States Geological Survey  
North American Datum of 1983 (NAD83)  
World Geodetic System of 1984 (WGS84). Projection and  
1 000-meter grid. Universal Transverse Mercator, Zone 13T  
10 000-foot ticks. Colorado Coordinate System of 1983  
(north zone)

Imagery:.....NAP, July 2009  
Roads:.....2006-2010 Tele Atlas  
Roads within US Forest Service Lands.....FS Topo Data  
with limited Forest Service updates, 2009  
Names:.....GNIS, 2009  
Hydrography:.....National Hydrography Dataset, 2009  
Contours:.....National Elevation Dataset, 2003



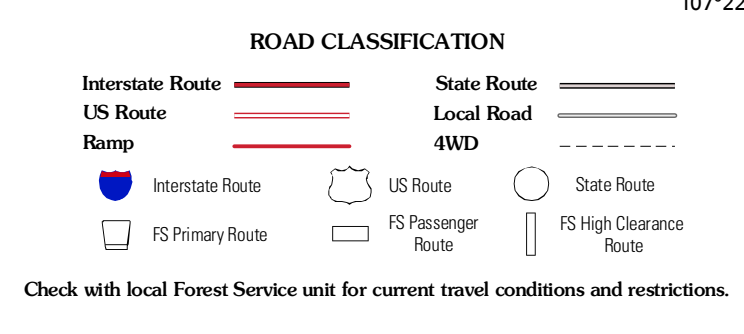
CONTOUR INTERVAL 40 FEET  
NORTH AMERICAN VERTICAL DATUM OF 1988

This map was produced to conform with version 0.5.10 of the  
draft USGS Standards for 7.5-Minute Quadrangle Maps.  
A metadata file associated with this product is draft version 0.5.13

COLORADO

| QUADRANGLE LOCATION |                   |                   |
|---------------------|-------------------|-------------------|
| Fortification       | Freeman Reservoir | Back Point        |
| Craig NE            | McInturf Mesa     | Slack Mountain    |
| Craig               | Ralph White Lake  | Rock Spring Gulch |

ADJOINING 7.5 QUADRANGLES



MCINTURF MESA, CO  
2011