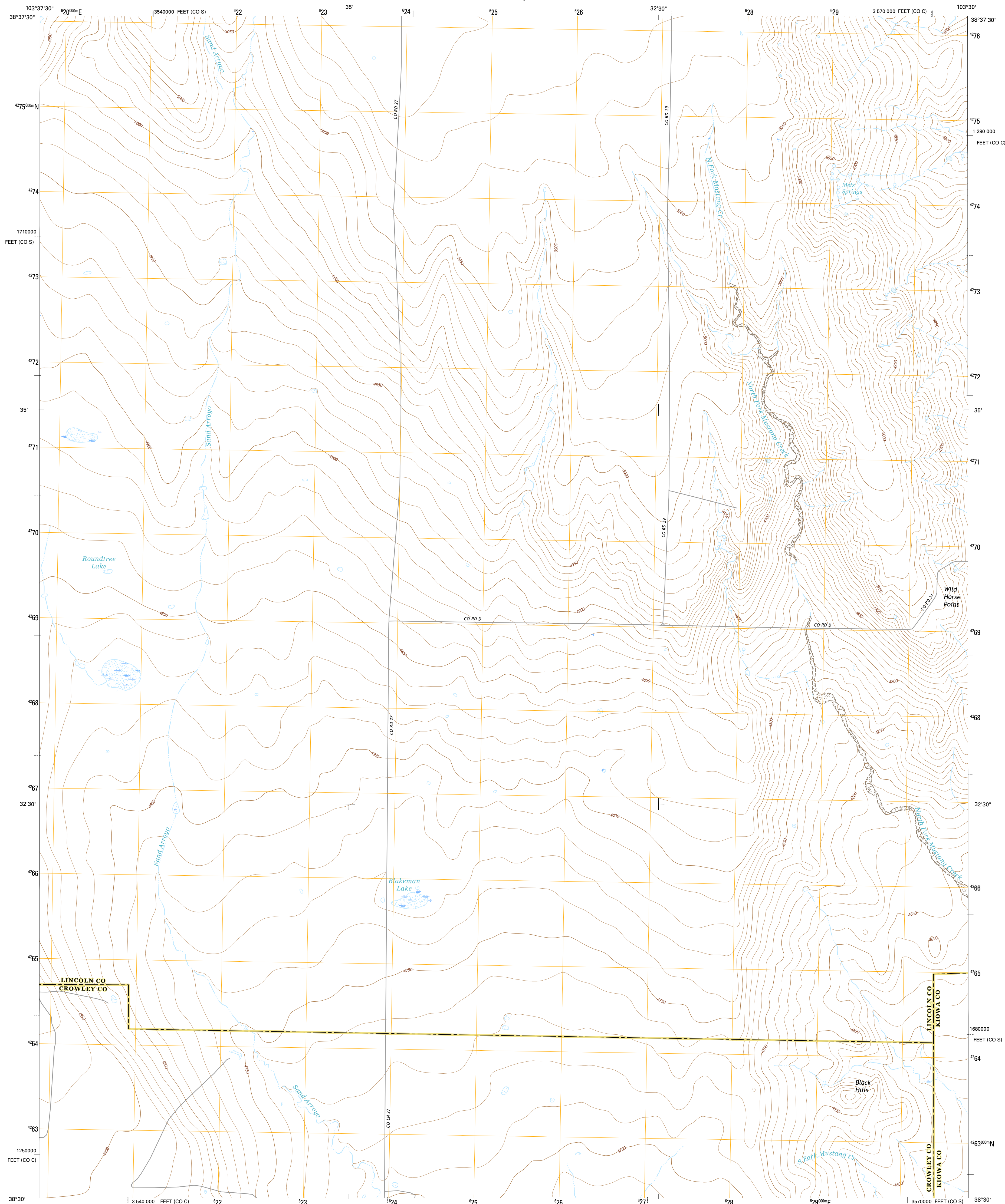




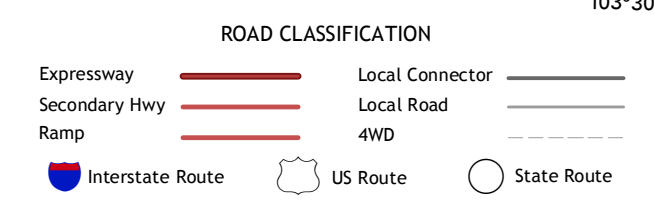
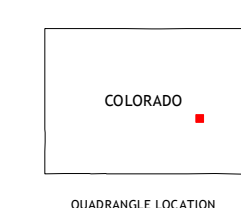
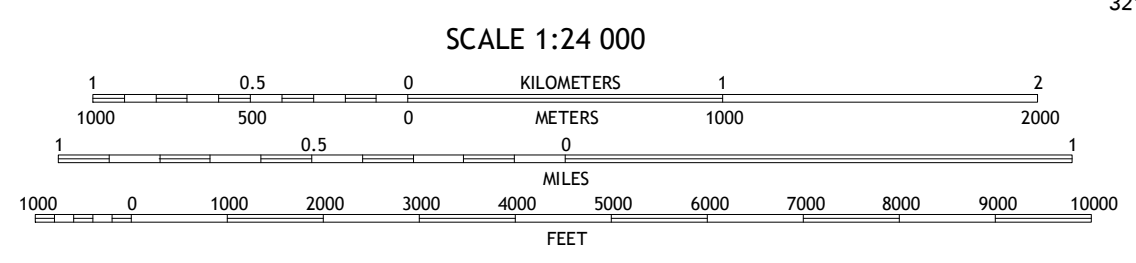
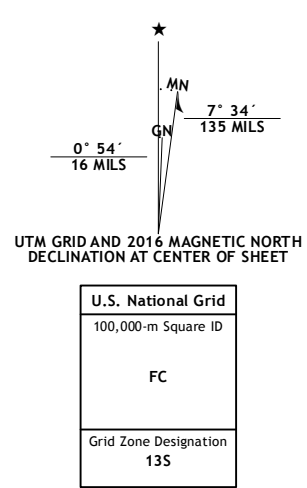
U.S. DEPARTMENT OF THE INTERIOR
U.S. GEOLOGICAL SURVEY



METZ SPRINGS QUADRANGLE
COLORADO
7.5-MINUTE SERIES



Produced by the United States Geological Survey
 North American Datum of 1983 (NAD83)
 World Geodetic System of 1984 (WGS84). Projection and
 1 000-meter grid: Universal Transverse Mercator, Zone 13S
 10 000-foot ticks: Colorado Coordinate System of 1983 (central
 and south zones)
 This map is not a legal document. Boundaries may be
 generalized for this map scale. Private lands within government
 reservations may not be shown. Obtain permission before
 entering private lands.
 Imagery.....NAIP, July 2013
 Roads.....U.S. Census Bureau, 2015 - 2016
 Names.....GNIS, 2016
 Hydrography.....National Hydrography Dataset, 2013
 Contours.....National Elevation Dataset, 2007
 Boundaries.....Multiple sources; see metadata file 1972 - 2016
 Public Land Survey System.....BLM, 2011
 Wetlands.....FWS National Wetlands Inventory 1977 - 2014



1	2	3
4	5	
6	7	8

- 1 Forder
- 2 Karval
- 3 Hubbard Lake
- 4 Sharp Lake
- 5 Scott Draw
- 6 Box Springs
- 7 The Pinnacles
- 8 Trimble Lake

METZ SPRINGS, CO
2016

