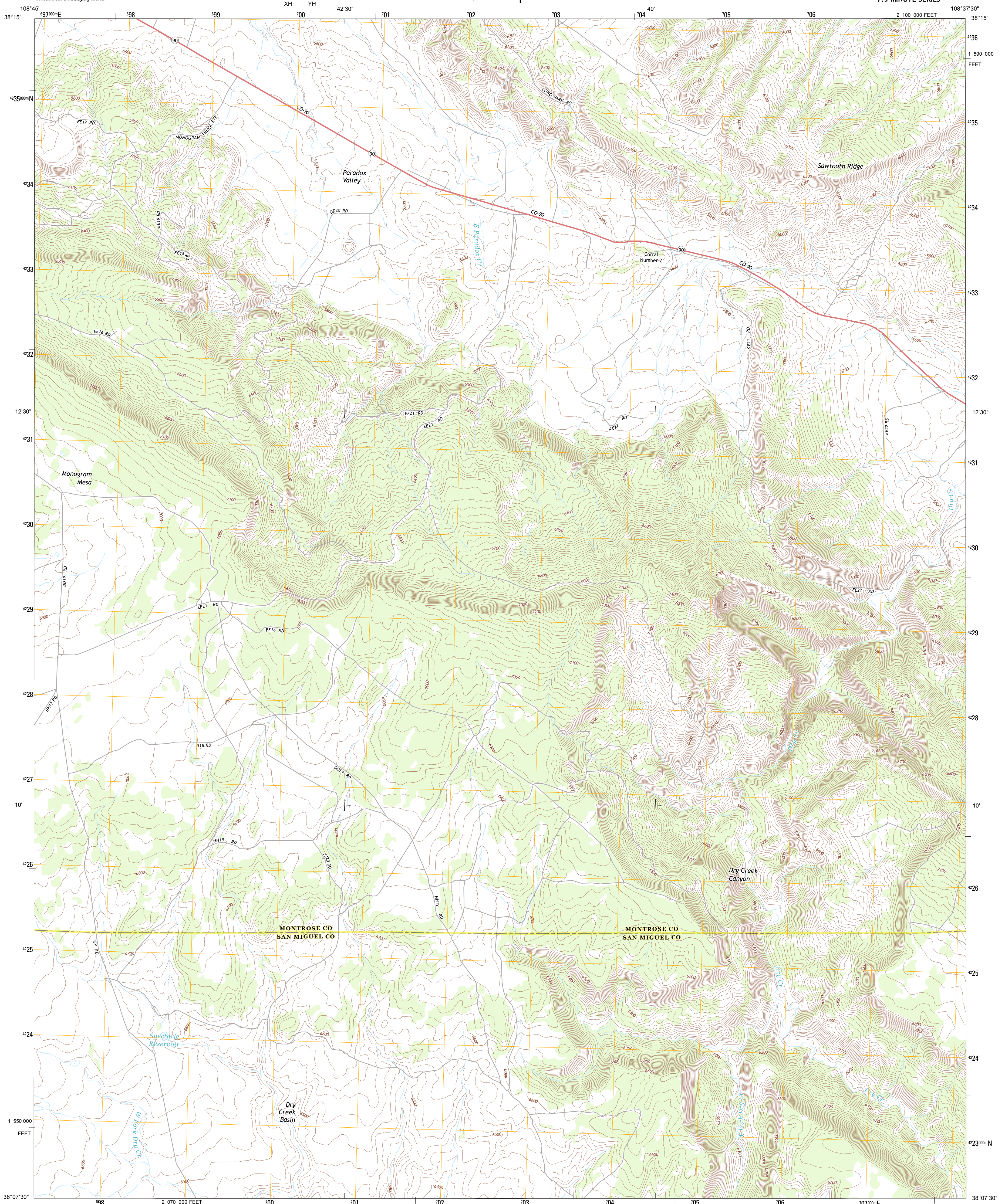




U.S. DEPARTMENT OF THE INTERIOR  
U. S. GEOLOGICAL SURVEY

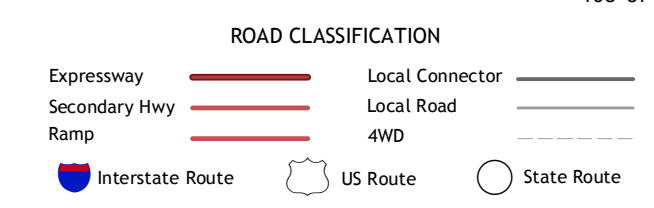
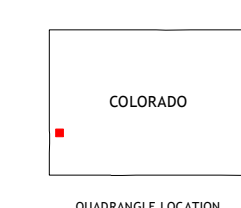
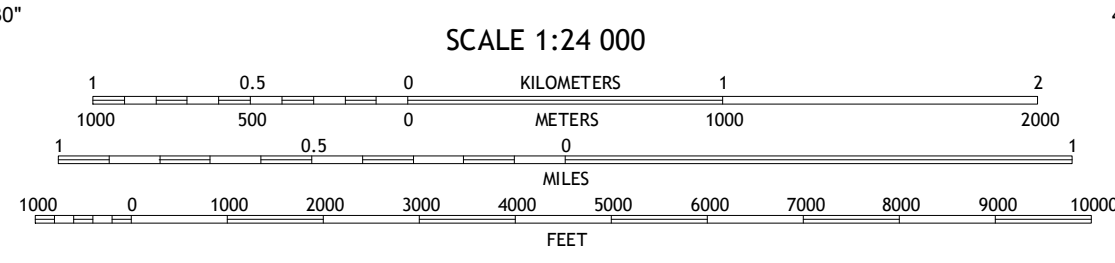
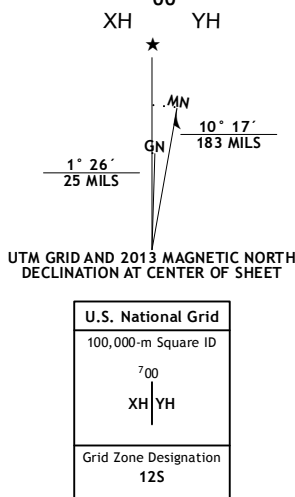


NATURITA NW QUADRANGLE  
COLORADO  
7.5-MINUTE SERIES



Produced by the United States Geological Survey  
North American Datum of 1983 (NAD83)  
World Geodetic System of 1984 (WGS84) Projection and  
1 000-meter grid: Universal Transverse Mercator, Zone 12S  
10 000-foot ticks: Colorado Coordinate System of 1983 (south zone)

Imagery.....NAIP, July 2011 - September 2011  
Roads.....©2006-2012 TomTom  
Names.....GNS, 2013  
Hydrography.....National Hydrography Dataset, 2011  
Contours.....National Elevation Dataset, 2005  
Boundaries.....BWC, IBC, USGS, 1972 - 2012  
Public Land Survey System.....BLM, 2011



QUADRANGLE LOCATION

Davis Mesa	Uranan	Nucia
Bull Canyon	Naturita NW	Naturita
Hamm Canyon	Gypsum Gap	Basin

NATURITA NW, CO  
2013

ADJOINING 7.5 QUADRANGLES

This map was produced to conform with the National Geospatial Program US Topo Product Standard, 2011. A metadata file associated with this product is draft version 0.6.14