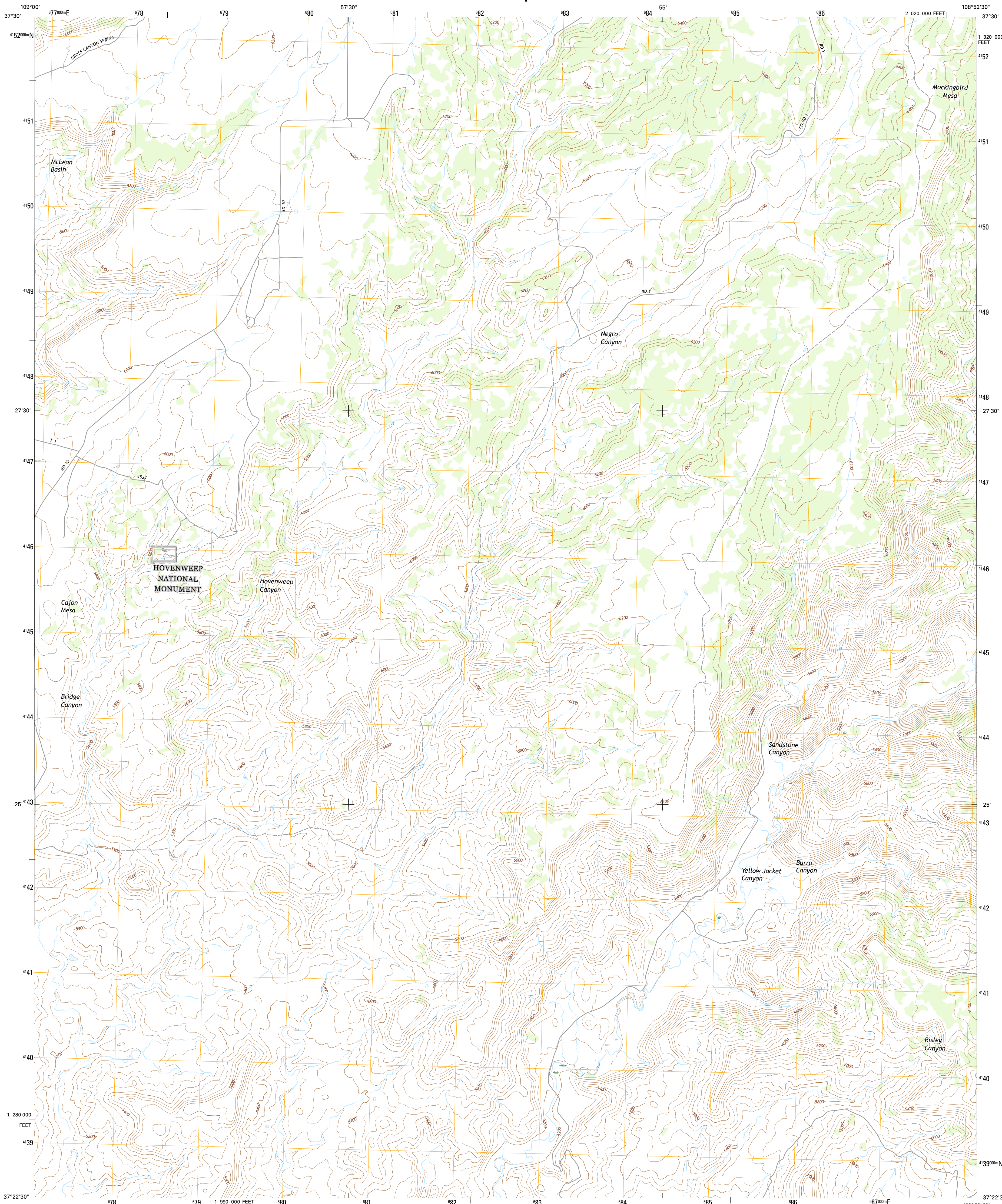




U.S. DEPARTMENT OF THE INTERIOR
U.S. GEOLOGICAL SURVEY



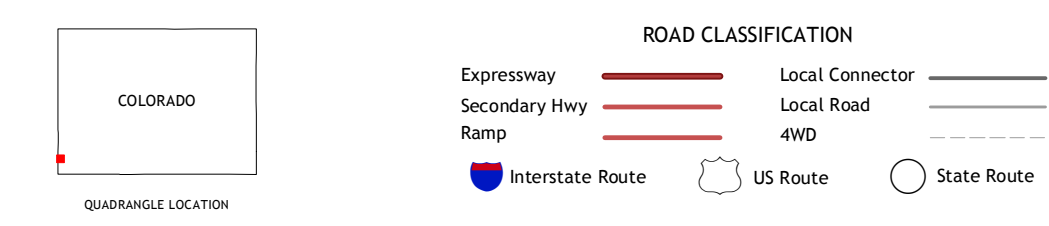
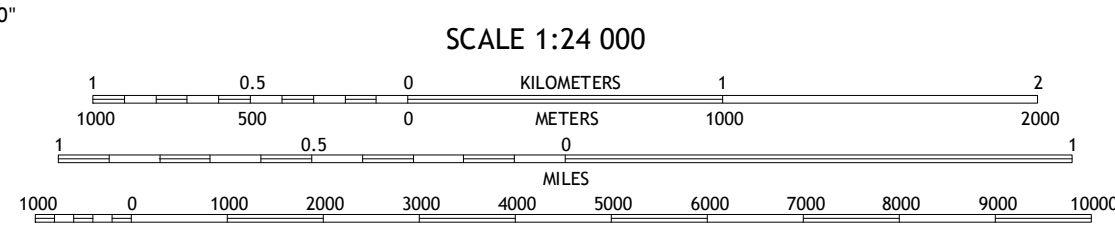
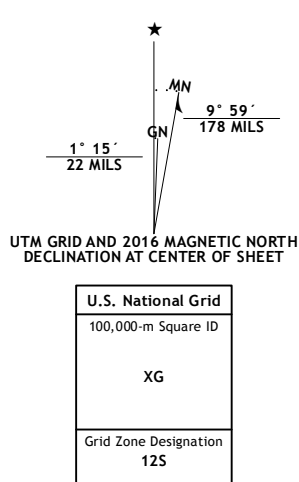
NEGRO CANYON QUADRANGLE
COLORADO-MONTEZUMA CO.
7.5-MINUTE SERIES



Produced by the United States Geological Survey
North American Datum of 1983 (NAD83)
World Geodetic System of 1984 (WGS84), Projection and
1 000-meter grid: Universal Transverse Mercator, Zone 12S
10 000-foot ticks: Colorado Coordinate System of 1983 (south zone)

This map is not a legal document. Boundaries may be generalized for this map scale. Private lands within government reservations may not be shown. Obtain permission before entering private lands.

Image: NAIIP, September 2013
Roads: U.S. Census Bureau, 2015 - 2016
Names: GNIS, 2016
Hydrography: National Hydrography Dataset, 2013
Contours: National Elevation Dataset, 2005
Boundaries: Multiple sources; see metadata file 1972 - 2016
Public Land Survey System: BLM, 2011
Wetlands: FWS National Wetlands Inventory 1977 - 2014



ADJOINING QUADRANGLES

1	2	3
4	5	6
7	8	

1 Pappoose Canyon
2 Ruin Canyon
3 Pleasant View
4 Ruin Point
5 Woods Canyon
6 Wickiup Canyon
7 Bowdish Canyon
8 Battle Rock

NEGRO CANYON, CO
2016

