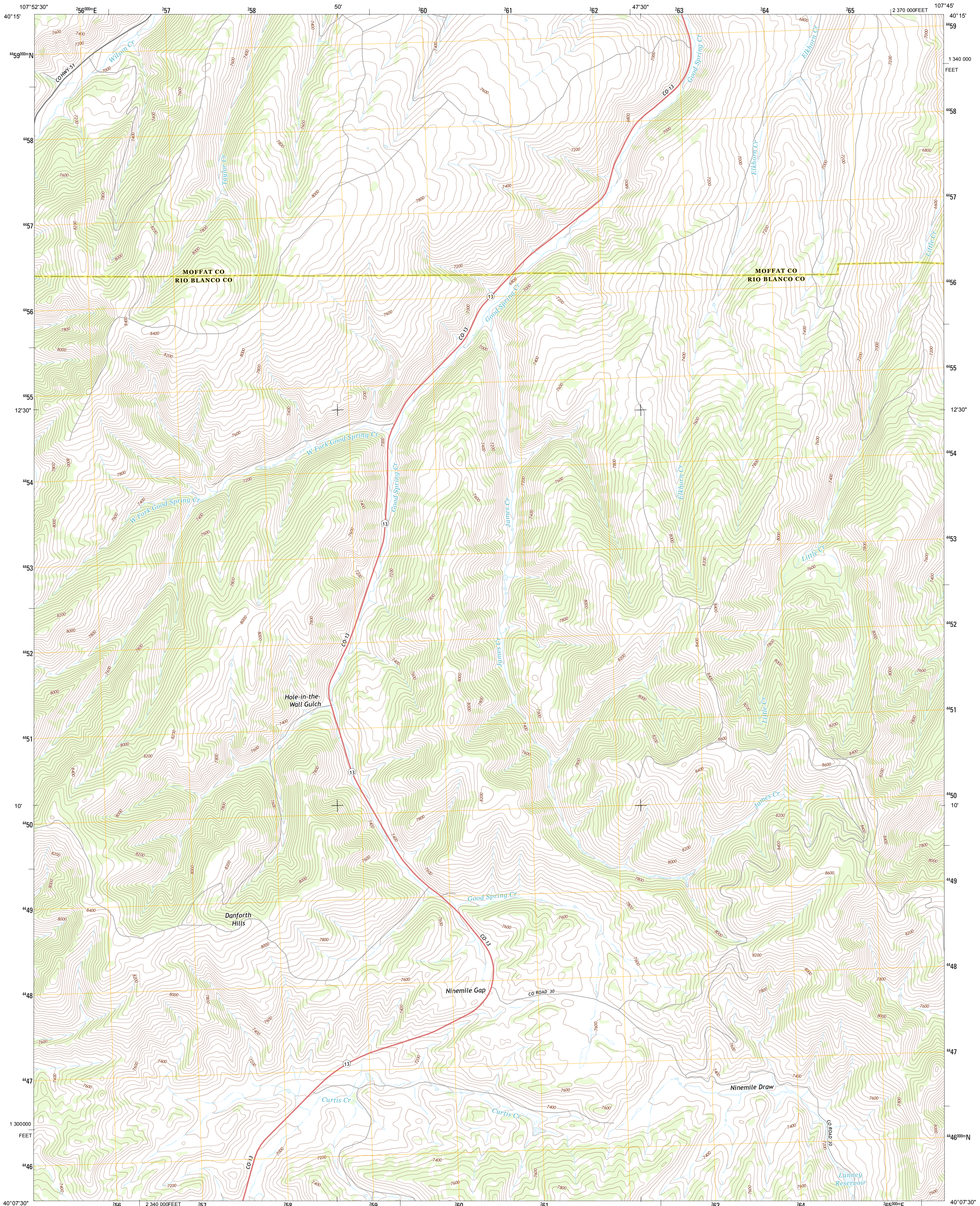




U.S. DEPARTMENT OF THE INTERIOR
U. S. GEOLOGICAL SURVEY

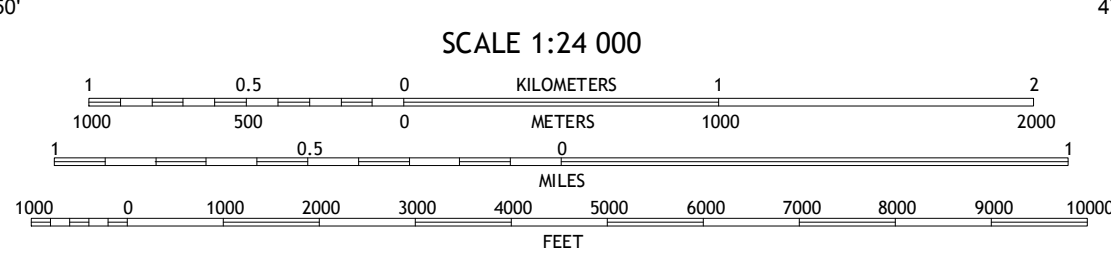
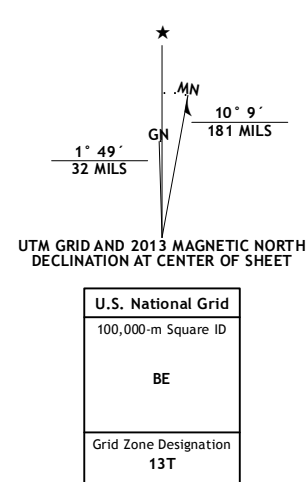


NINEMILE GAP QUADRANGLE
COLORADO
7.5-MINUTE SERIES

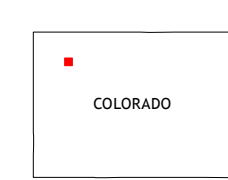


Produced by the United States Geological Survey
North American Datum of 1983 (NAD83)
World Geodetic System of 1984 (WGS84). Projection and
1000-meter grid: Universal Transverse Mercator, Zone 13T
10 000-foot ticks: Colorado Coordinate System of 1983 (north
zone)

Imagery.....NAIP, July 2011
Roads.....©2006-2012 TomTom
Names.....GNIS, 2013
Hydrography.....National Hydrography Dataset, 2011
Contours.....National Elevation Dataset, 2004
Boundaries.....IBWC, USGS, 1972-2012
Public Land Survey System.....BLM, 2011

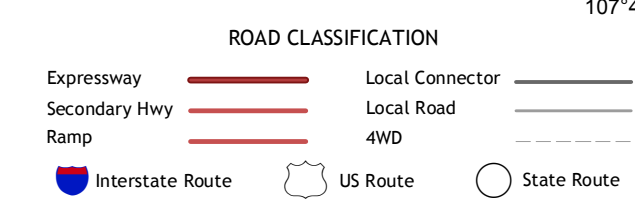


CONTOUR INTERVAL 40 FEET
NORTH AMERICAN VERTICAL DATUM OF 1988
This map was produced to conform with the
National Geospatial Program US Topo Product Standard, 2011.
A metadata file associated with this product is draft version 0.6.14



QUADRANGLE LOCATION

Easton Gulch	Axtel	Monument Butte
Devils Hole Gulch	Ninemile Gap	Thornburgh
Meecher	Rattlesnake Mesa	Sawmill Mountain



NINEMILE GAP, CO
2013

ADJOINING 7.5 QUADRANGLES