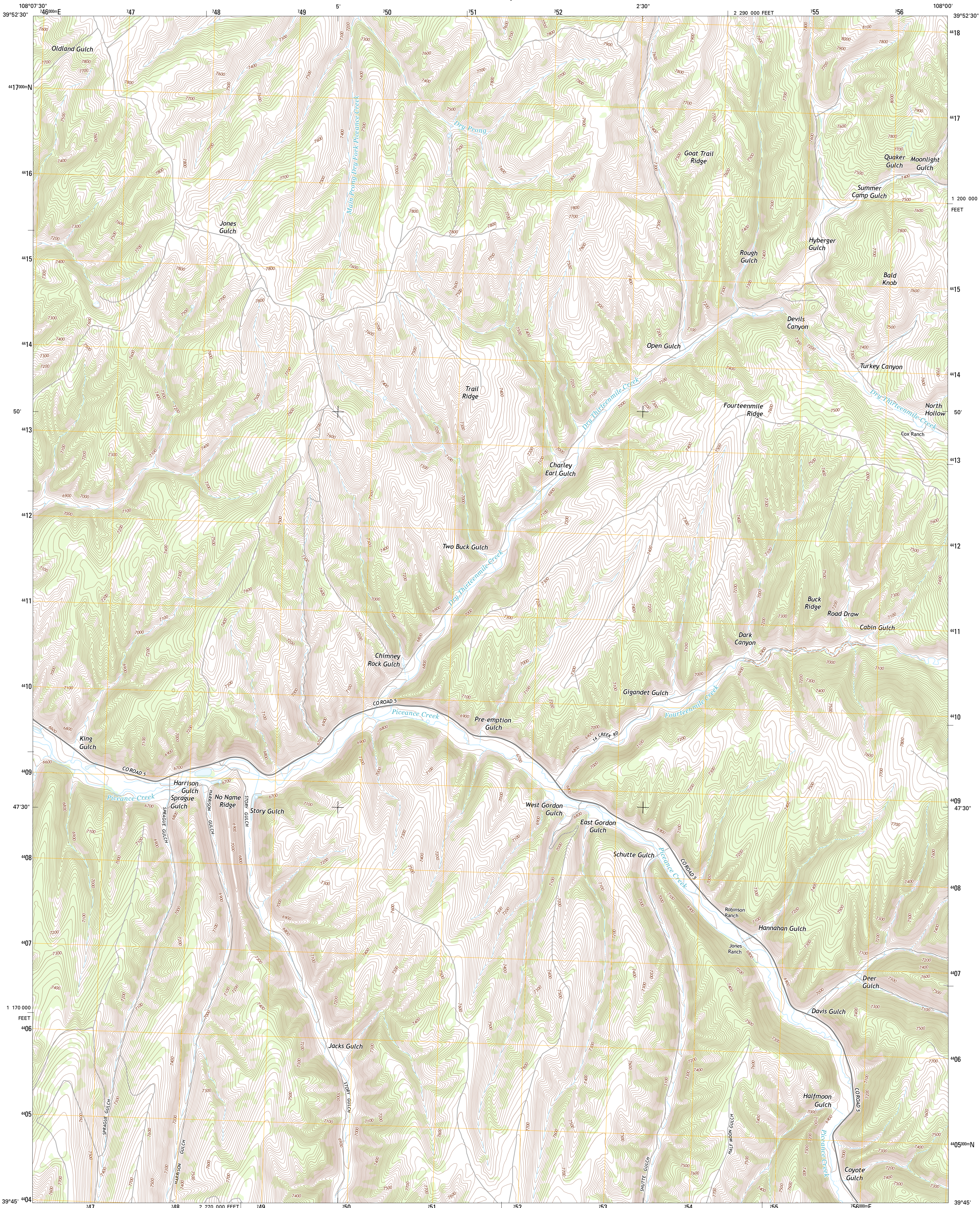




U.S. DEPARTMENT OF THE INTERIOR
U. S. GEOLOGICAL SURVEY

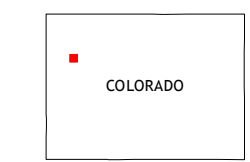
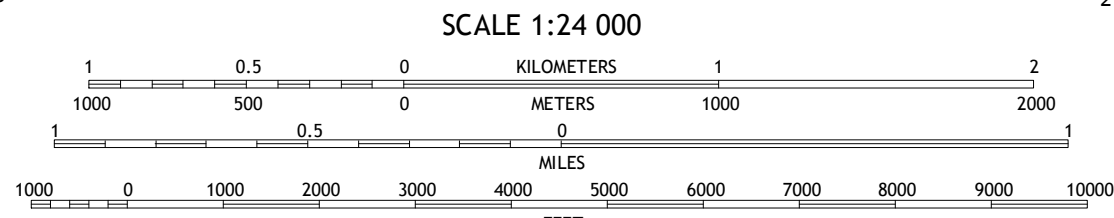
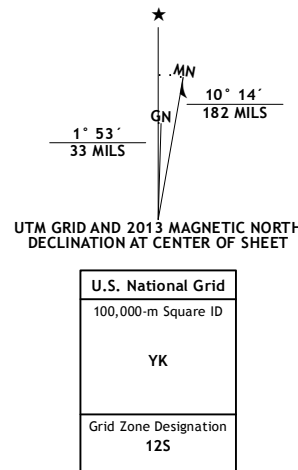


NO NAME RIDGE QUADRANGLE
COLORADO-RIO BLANCO CO.
7.5-MINUTE SERIES



Produced by the United States Geological Survey
North American Datum of 1983 (NAD83)
World Geodetic System of 1984 (WGS84). Projection and
1 000-meter grid: Universal Transverse Mercator, Zone 12S
10 000-foot ticks: Colorado Coordinate System of 1983 (north
zone)

Imagery.....NAIP, July 2011
Roads.....©2006-2012, TomTom
Names.....GNIS, 2013
Hydrography.....National Hydrography Dataset, 2011
Contours.....National Elevation Dataset, 2004
Boundaries.....Census, IBWC, IBC, USGS, 1972 - 2012
Public Land Survey System.....BLM, 2011



| | | |
|------------------|----------------|-------------------|
| Greenswood Gulch | Segar Mountain | LO 7 Hill |
| Jessup Gulch | No Name Ridge | Thirteemile Creek |
| Cutoff Gulch | McCarthy Gulch | Rio Blanco |

NO NAME RIDGE, CO
2013