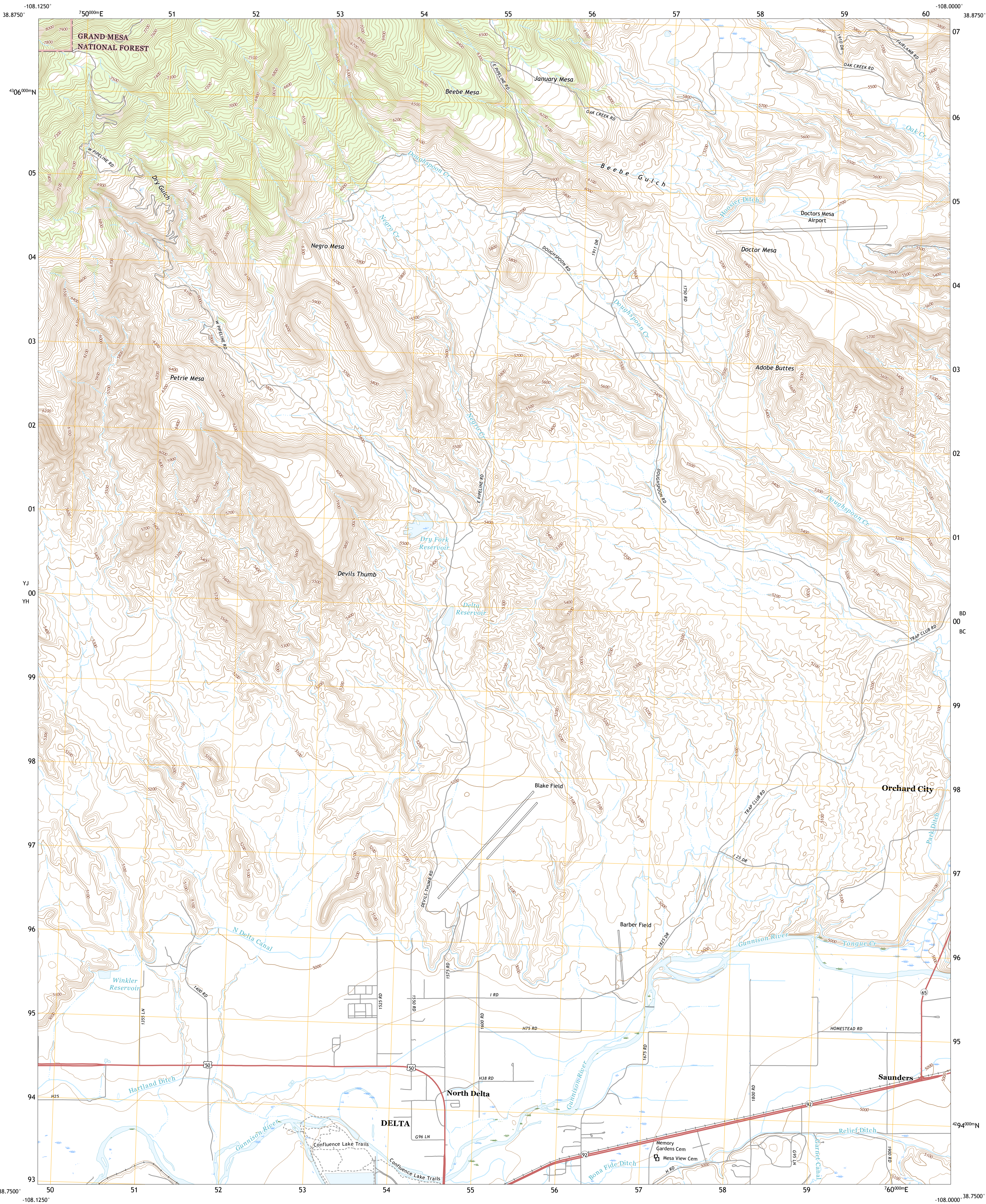




U.S. DEPARTMENT OF THE INTERIOR
U.S. GEOLOGICAL SURVEY

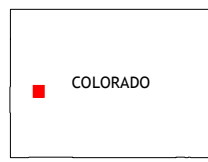
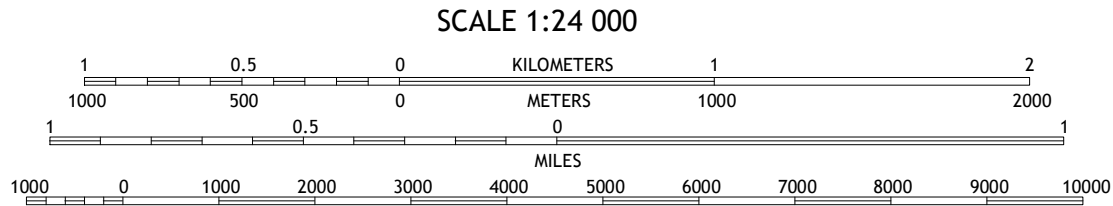
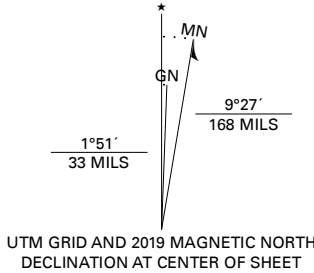


NORTH DELTA QUADRANGLE
COLORADO - DELTA COUNTY
7.5-MINUTE SERIES



Produced by the United States Geological Survey
North American Datum of 1983 (NAD83)
World Geodetic System of 1984 (WGS84). Projection and
1 000-meter grid: Universal Transverse Mercator, Zone 12S
This map is not a legal document. Boundaries may be
generalized for this map scale. Private lands within government
reservations may not be shown. Obtain permission before
entering private lands.

Imagery:.....NAIP, August 2017 - January 2018
Roads:.....U.S. Census Bureau, 2016
Roads within US Forest Service Lands:.....FS Topo Data
with limited Forest Service updates, 2013
Names:.....GNIS, 1978 - 2017
Hydrography:.....National Hydrography Dataset, 2002 - 2019
Contours:.....National Elevation Dataset, 2006 - 2007
Boundaries:.....Multiple sources: see metadata file, 2017 - 2018
Public Land Survey System:.....BLM, 2018
Wetlands:.....FWS National Wetlands Inventory 1982 - 1983



1	2	3
4	5	6
7	8	9

ADJOINING QUADRANGLES

1 Indian Point
2 Heils Kitchen
3 Cedaredge
4 Point Creek
5 Orchard City
6 Roubidoux
7 Delta
8 Olathe NW

ROAD CLASSIFICATION

Expressway
Secondary Hwy
Ramp
Interstate Route
FS Primary Route

Local Connector
Local Road
4WD
US Route
FS Passenger Route
State Route
FS High Clearance Route

Check with local Forest Service unit
for current travel conditions and restrictions.

NORTH DELTA, CO
2019

