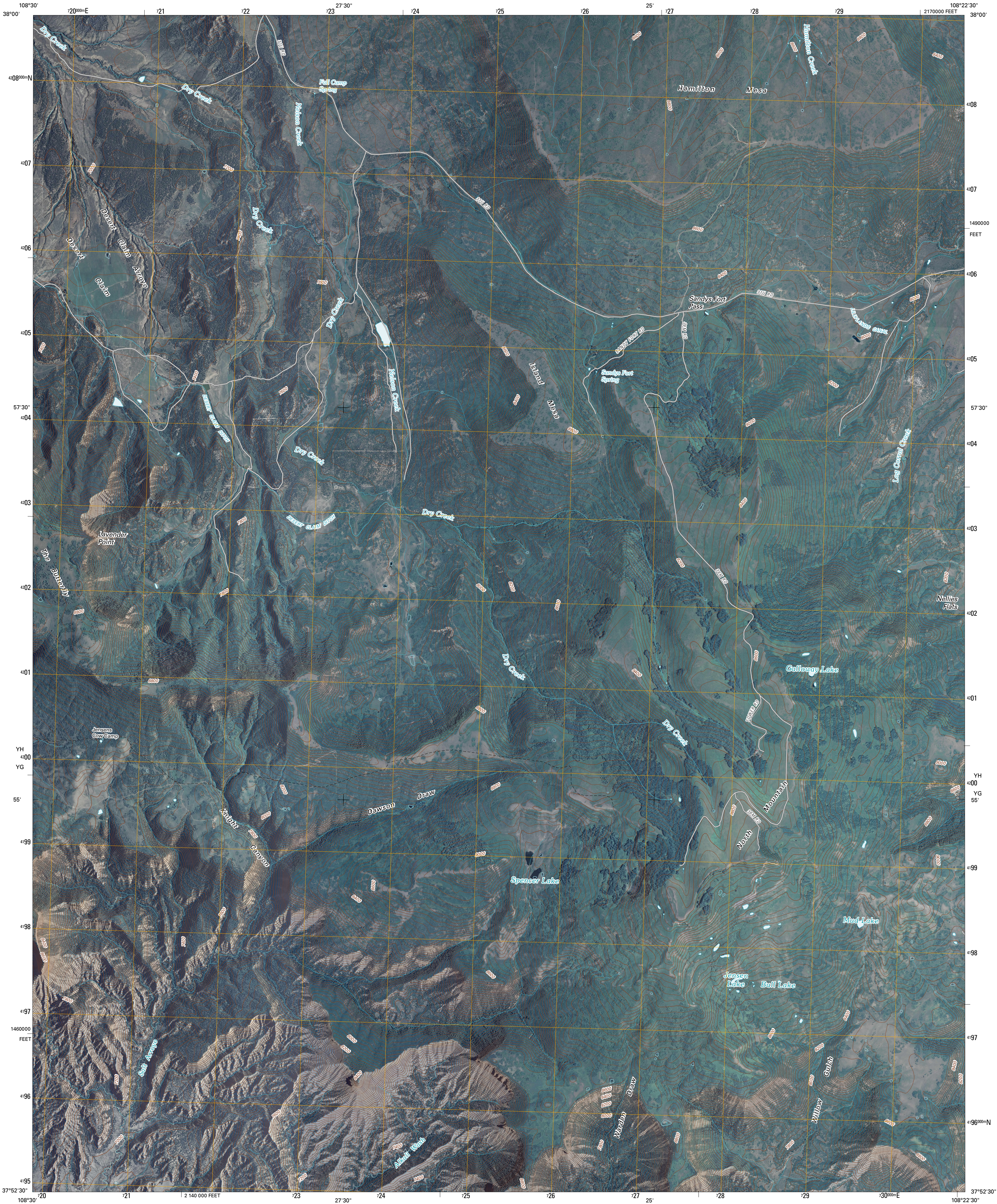




U.S. DEPARTMENT OF THE INTERIOR
U. S. GEOLOGICAL SURVEY



NORTH MOUNTAIN QUADRANGLE
COLORADO
7.5-MINUTE SERIES

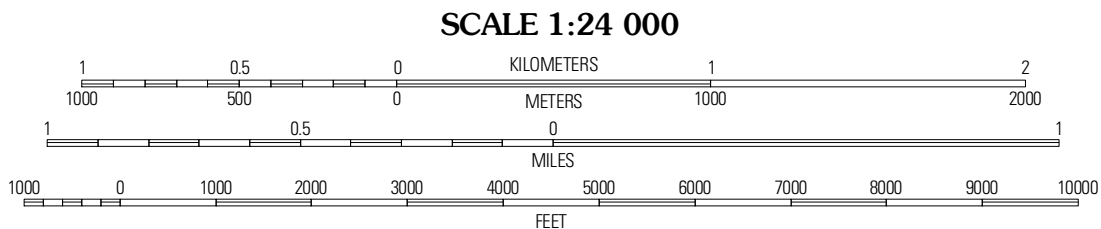


Produced by the United States Geological Survey
North American Datum of 1983 (NAD83)
World Geodetic System of 1984 (WGS84). Projection and
1 000-meter grid: Universal Transverse Mercator, Zone 12S
10 000-foot ticks: Colorado Coordinate System of 1983
(south zone)

Imagery.....NAIP, June 2009 - July 2009
Roads.....©2006-2010 Tele Atlas
Names.....GNIS, 2008
Hydrography.....National Hydrography Dataset, 2009
Contours.....National Elevation Dataset, 2005

UTM GRID AND 2010 MAGNETIC NORTH
DECLINATION AT CENTER OF SHEET

U.S. National Grid
100,000m Square ID
YH
YG
Grid Zone Designation
US



CONTOUR INTERVAL 40 FEET
NORTH AMERICAN VERTICAL DATUM OF 1988

This map was produced to conform with version 0.5.10 of the
draft USGS Standards for 7.5-Minute Quadrangle Maps.
A metadata file associated with this product is draft version 0.5.11



Basin	Berkley Diner	Oak Hill
McKenna Peak	North Mountain	Lone Cone
Glade Mountain	South Mountain	Groundhog Reservoir

ADJOINING 7.5' QUADRANGLES

ROAD CLASSIFICATION

Interstate Route	State Route
US Route	Local Road
Ramp	4WD

Interstate Route US Route State Route

NORTH MOUNTAIN, CO
2010