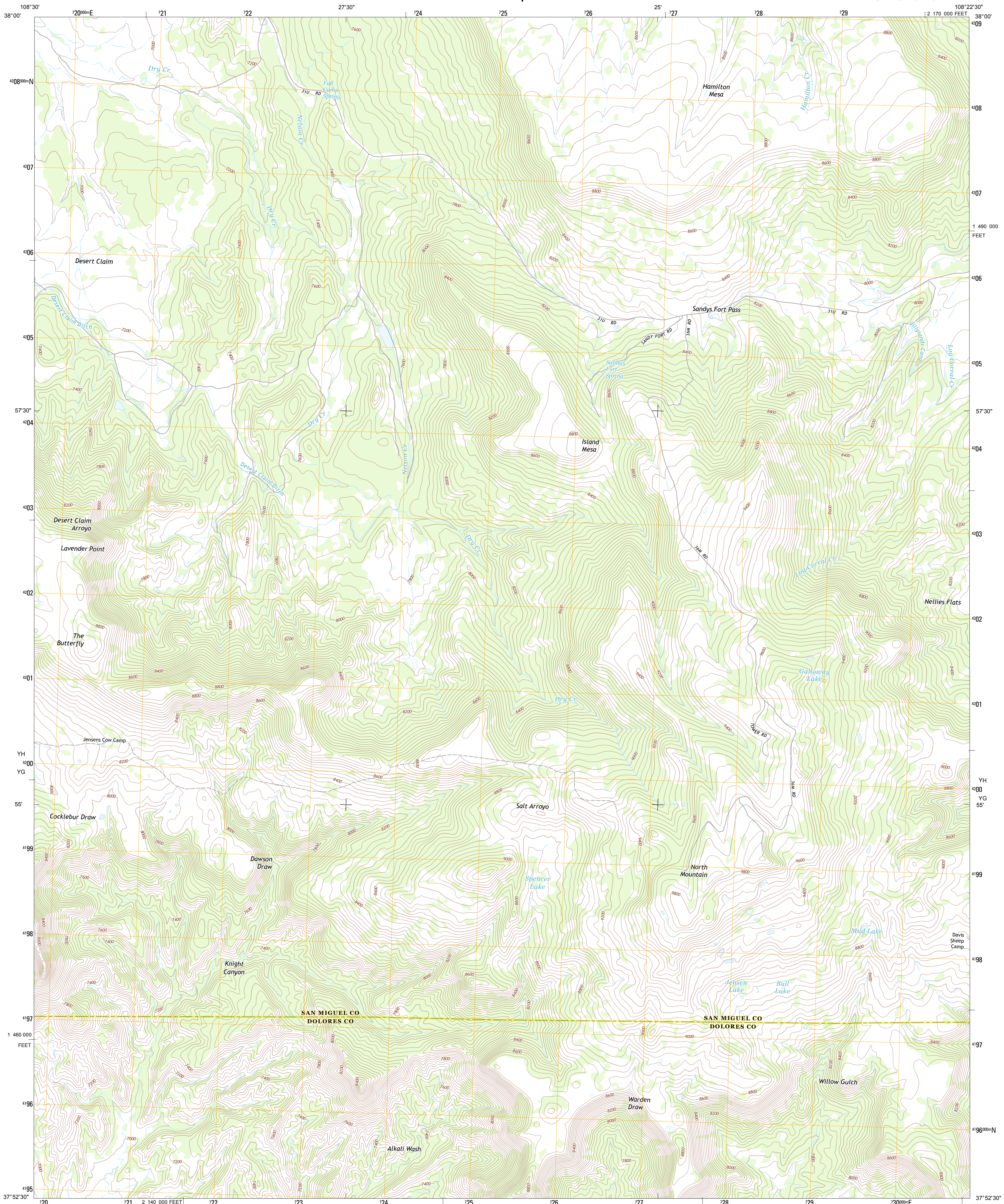




U.S. DEPARTMENT OF THE INTERIOR
U. S. GEOLOGICAL SURVEY

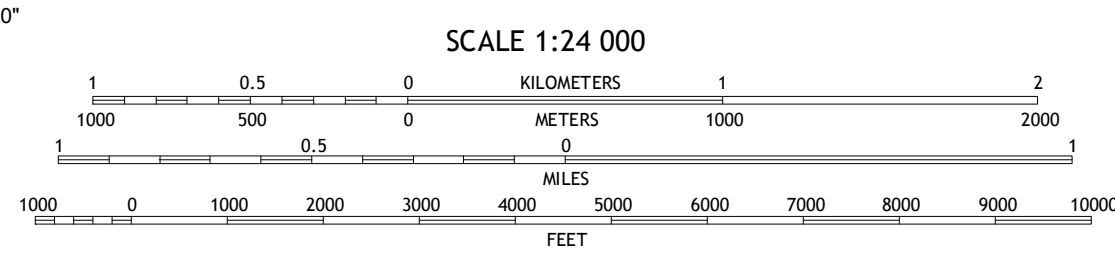
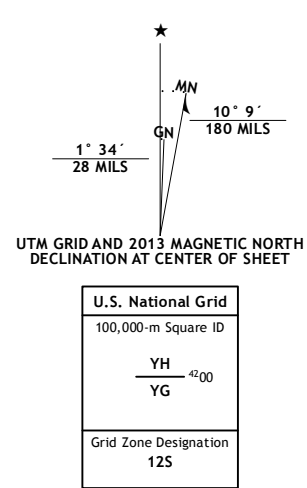


NORTH MOUNTAIN QUADRANGLE
COLORADO
7.5-MINUTE SERIES

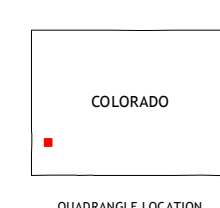


Produced by the United States Geological Survey
North American Datum of 1983 (NAD83)
World Geodetic System of 1984 (WGS84), Projection and
1 000-meter grid; Universal Transverse Mercator, Zone 12S
10 000-foot ticks; Colorado Coordinate System of 1983 (south
zone)

Imagery.....NAIP, July 2011
Roads.....©2006-2012 TomTom
Names.....©2013 GNS, 2013
Hydrography.....National Hydrography Dataset, 2011
Contours.....National Elevation Dataset, 2005
Boundaries, IRW, B.C, USGS, 1972-2012
Public Land Survey System.....BLM, 2011

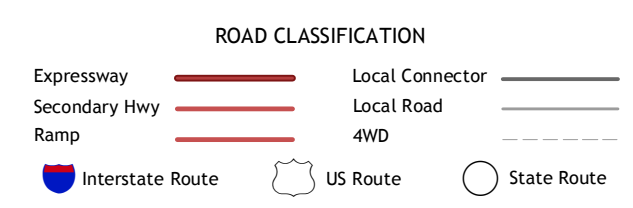


SCALE 1:24 000
CONTOUR INTERVAL 40 FEET
NORTH AMERICAN VERTICAL DATUM OF 1988
This map was produced to conform with the
National Geospatial Program US Topo Product Standard, 2011.
A metadata file associated with this product is draft version 0.6.14



QUADRANGLE LOCATION

Basin	Barkeley Draw	Oak Hill
McKenna Peak	North Mountain	Lone Cone
Glade Mountain	South Mountain	Groundhog Reservoir



NORTH MOUNTAIN, CO
2013

ADJOINING 7.5 QUADRANGLES