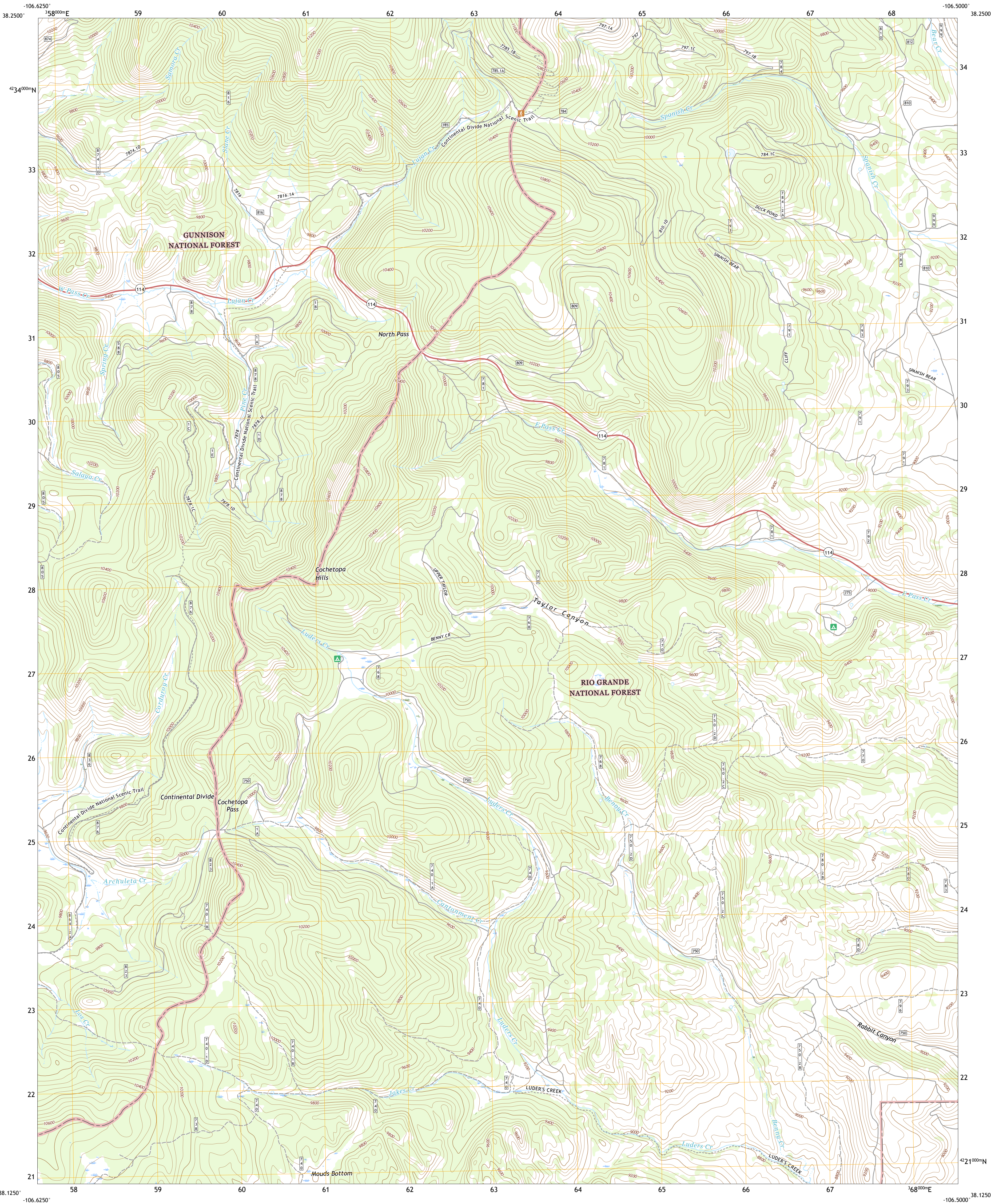




U.S. DEPARTMENT OF THE INTERIOR  
U.S. GEOLOGICAL SURVEY

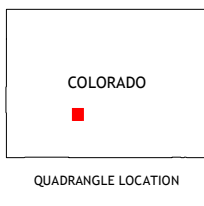
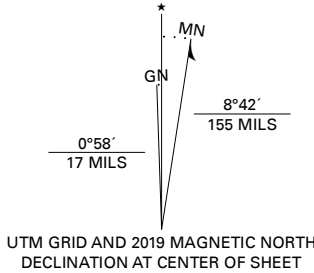


NORTH PASS QUADRANGLE  
COLORADO - SAGUACHE COUNTY  
7.5-MINUTE SERIES



Produced by the United States Geological Survey  
North American Datum of 1983 (NAD83)  
World Geodetic System of 1984 (WGS84). Projection and  
1 000-meter grid/Universal Transverse Mercator, Zone 13S  
This map is not a legal document. Boundaries may be  
generalized for this map scale. Private lands within government  
reservations may not be shown. Obtain permission before  
entering private lands.

Imagery.....NAIP, October 2017 - January 2018  
Roads.....U.S. Census Bureau, Not Available  
Roads within US Forest Service Lands.....FS Topo Data  
with limited Forest Service updates, 2013  
Names.....GNIS, 1978 - 2018  
Hydrography.....National Hydrography Dataset, 2002 - 2019  
Contours.....National Elevation Dataset, 2001  
Boundaries.....Multiple sources: see metadata file 2017, 2018  
Public Land Survey System.....BLM, 2018  
Wetlands.....FWS National Wetlands Inventory 1983 - 1987



1	2	3
4	5	6
7	8	9

1 Razor Creek Dome  
2 West Baldy  
3 Sargents Mesa  
4 Cochetopa Park  
5 Trickle Mountain  
6 Saguache Park  
7 Grouse Creek  
8 Lake Mountain

ROAD CLASSIFICATION

Expressway  
Secondary Hwy  
Ramp  
Interstate Route  
FS Primary Route  
FS Passenger Route  
FS High Clearance Route

Local Connector  
Local Road  
4WD  
State Route  
FS High Clearance Route

Check with local Forest Service unit  
for current travel conditions and restrictions.

NORTH PASS, CO  
2019

