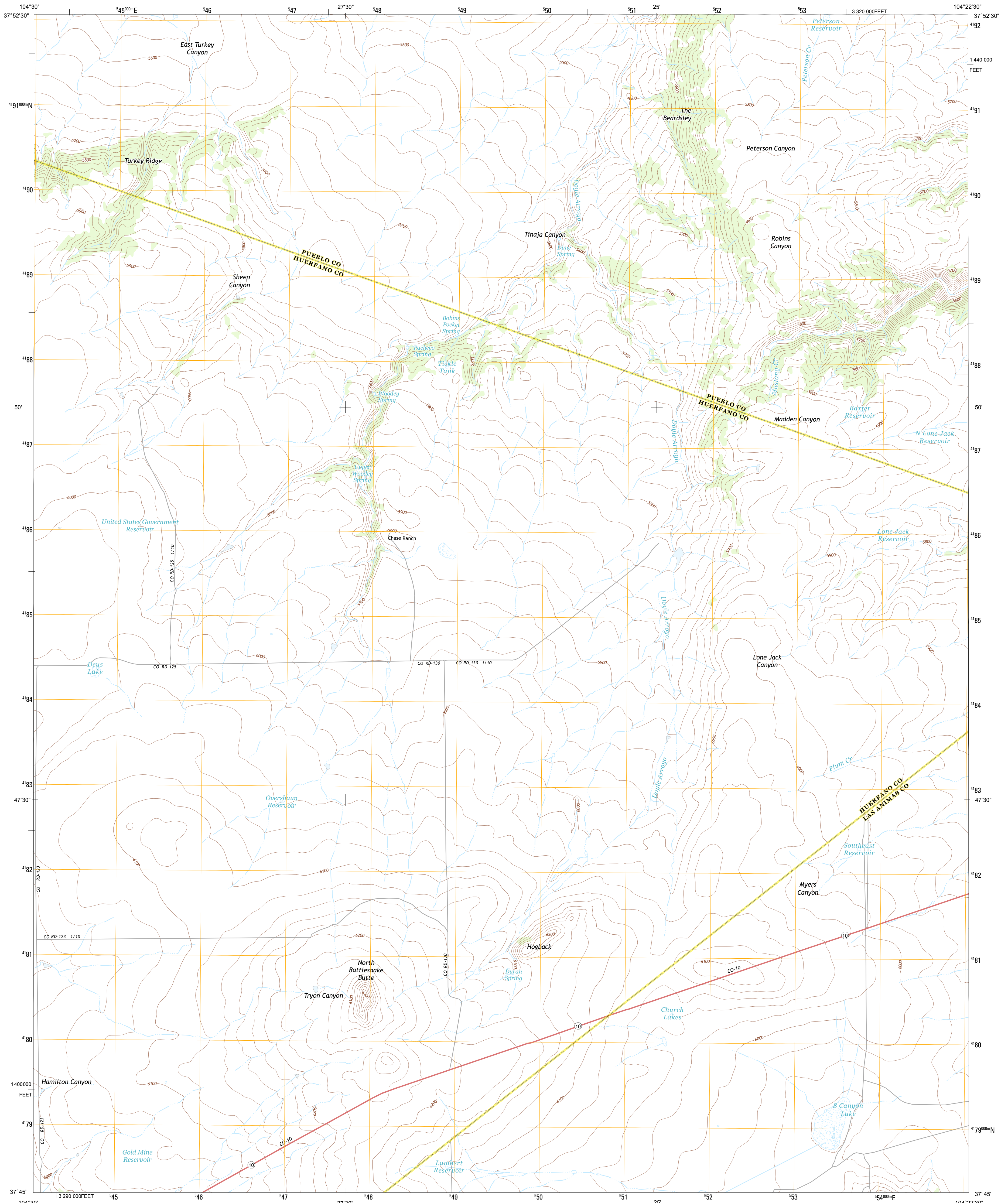




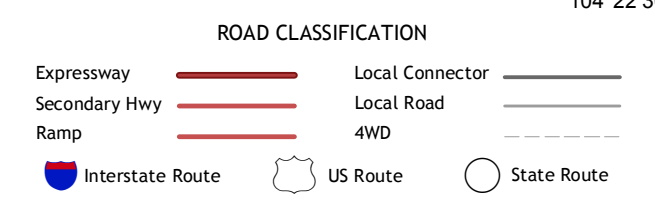
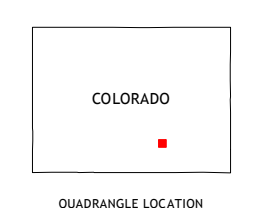
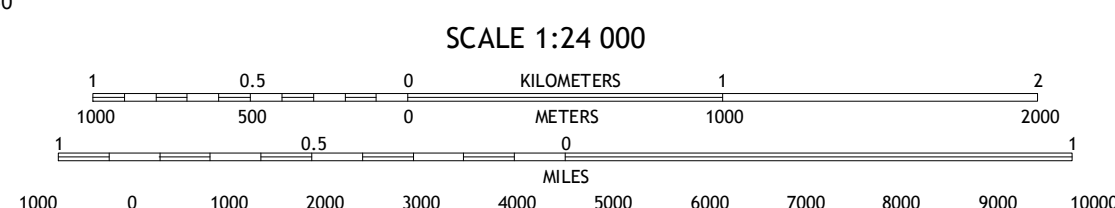
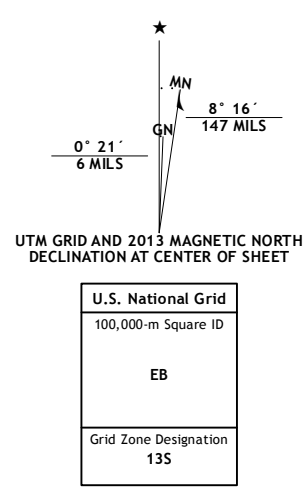
U.S. DEPARTMENT OF THE INTERIOR
U. S. GEOLOGICAL SURVEY



NORTH RATTLESNAKE BUTTE QUADRANGLE
COLORADO
7.5-MINUTE SERIES



Produced by the United States Geological Survey
North American Datum of 1983 (NAD83)
World Geodetic System of 1984 (WGS84). Projection and
1 000-meter grid: Universal Transverse Mercator, Zone 13S
10 000-foot ticks: Colorado Coordinate System of 1983 (south
zone)



Imagery.....NAIP, July 2011
Roads.....G2006-2012 TomTom
Names.....GNIS, 2013
Hydrography.....National Hydrography Dataset, 2011
Contours.....National Elevation Dataset, 2007
Boundaries.....Census, IBWC, IBC, USGS, 1972-2012
Public Land Survey System.....BLM, 2011

SCALE 1:24 000
CONTOUR INTERVAL 20 FEET
NORTH AMERICAN VERTICAL DATUM OF 1988
This map was produced to conform with the
National Geospatial Program US Topo Product Standard, 2011.
A metadata file associated with this product is draft version 0.6.14

QUADRANGLE LOCATION		
Cedarwood	Hog Ranch	Red Top
Capps	North	Myers
Springs	Rattlesnake	Canyon
	Butte	
Cucharas	South	Jones
Reservoir	Rattlesnake	Lake
	Butte	Spring

NORTH RATTLESNAKE BUTTE, CO
2013

ADJOINING 7.5 QUADRANGLES