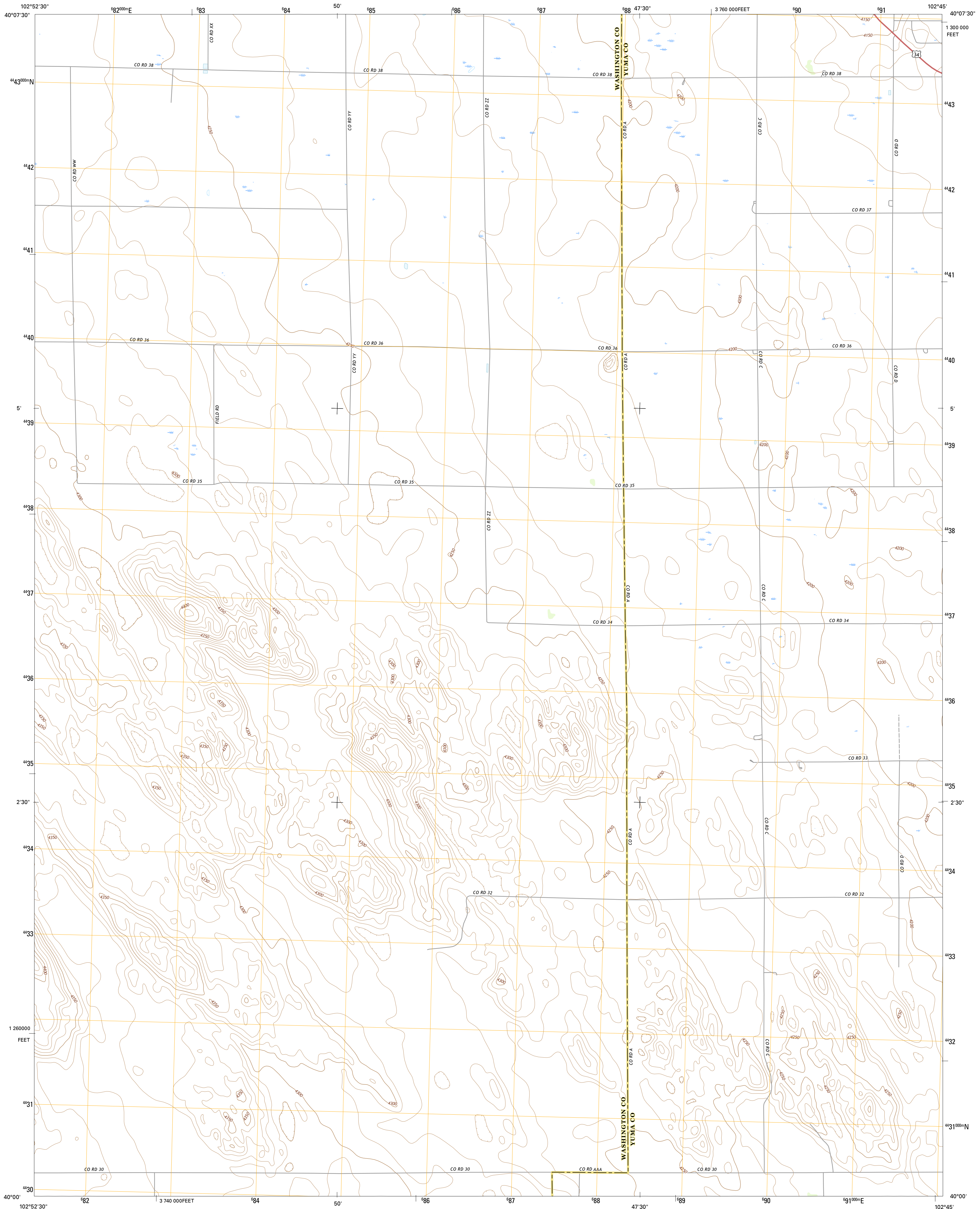




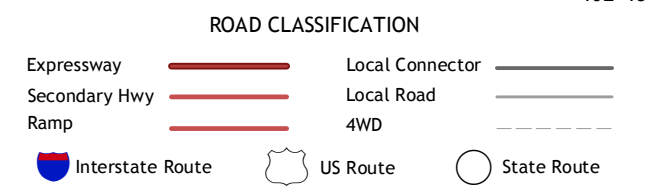
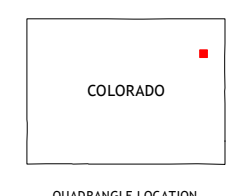
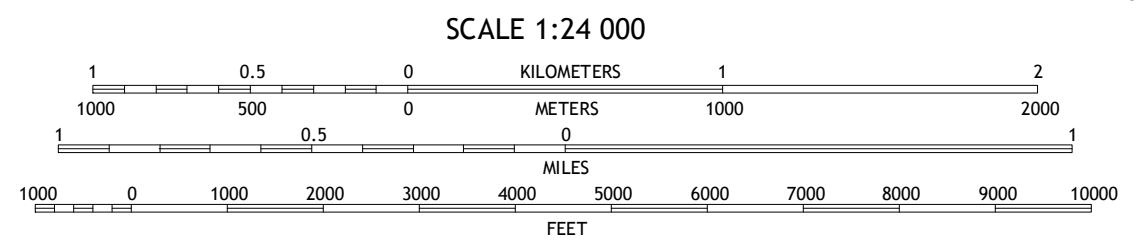
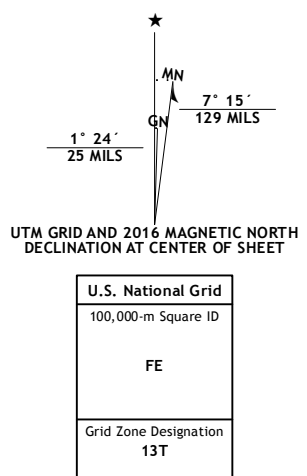
U.S. DEPARTMENT OF THE INTERIOR
U.S. GEOLOGICAL SURVEY



OTIS SE QUADRANGLE
COLORADO
7.5-MINUTE SERIES



Produced by the United States Geological Survey
 North American Datum of 1983 (NAD83)
 World Geodetic System of 1984 (WGS84), Projection and
 1000-meter grid; Universal Transverse Mercator, Zone 13T
 10 000-foot ticks; Colorado Coordinate System of 1983 (north
 zone)
 Imagery.....NAIP, July 2013
 Roads.....U.S. Census Bureau, 2015 - 2016
 Names.....GNIS, 2016
 Hydrography.....National Hydrography Dataset, 2013
 Contours.....National Elevation Dataset, 2007
 Boundaries.....Multiple sources; see metadata file 1977 - 2016
 Public Land Survey System.....BLM, 2011
 Wetlands.....FWS National Wetlands Inventory 1977 - 2014



1	2	3	1 Otis
4	5	6	2 Hyde
7	8	7	3 Yuma North
		8	4 Snyder Lake
			5 Yuma South
			6 De Nova NW
			7 De Nova NE
			8 Beverly Grove

OTIS SE, CO
2016

