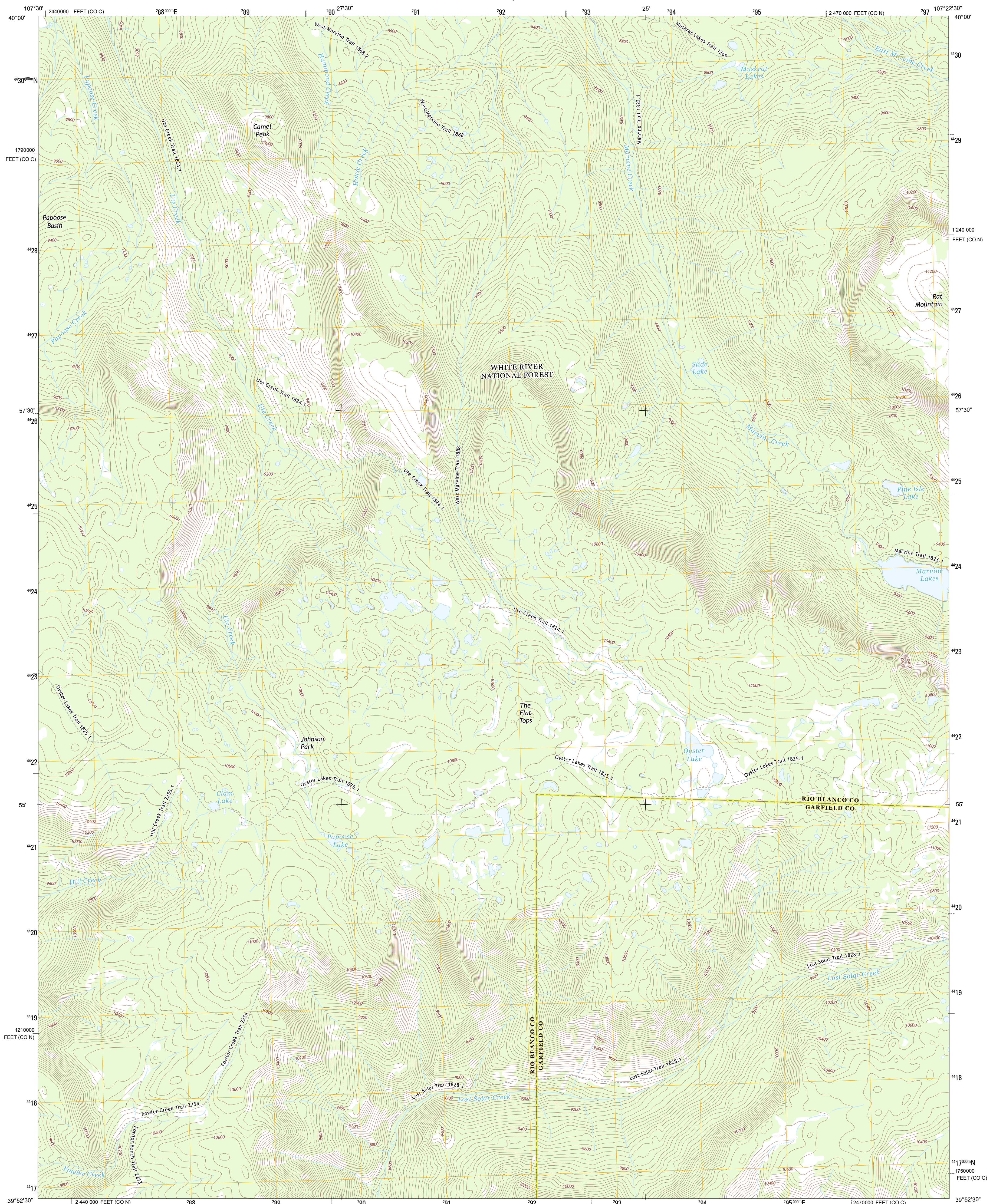




U.S. DEPARTMENT OF THE INTERIOR  
U. S. GEOLOGICAL SURVEY

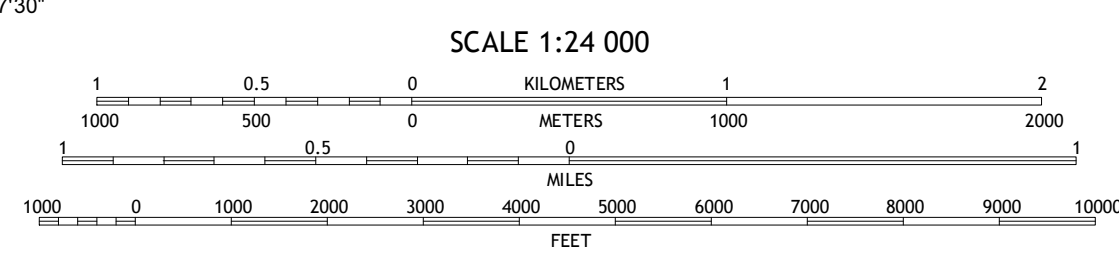
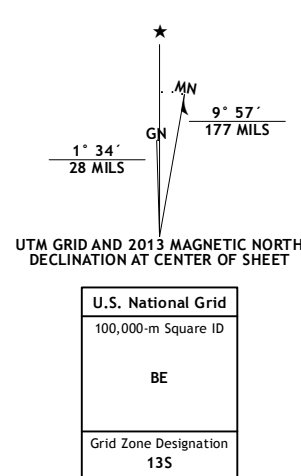


OYSTER LAKE QUADRANGLE  
COLORADO  
7.5-MINUTE SERIES

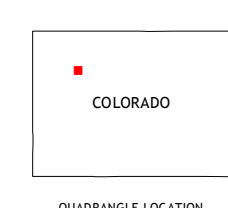


Produced by the United States Geological Survey  
North American Datum of 1983 (NAD83)  
World Geodetic System of 1984 (WGS84). Projection and  
1:100,000 scale grid: Universal Transverse Mercator, Zone 13S  
10 000-foot ticks: Colorado Coordinate System of 1983 (north  
and central zones)

Imagery.....NAIP, July 2011  
Roads.....©2006-2012 TomTom  
Roads within US Forest Service Lands.....FS Topo Data  
with limited Forest Service updates, 2013  
Names.....GNIS, 2013  
Hydrography.....National Hydrography Dataset, 2011  
Contours.....National Elevation Dataset, 2004  
Boundaries.....Census, IBWC, IBC, USGS, 1972 - 2012  
Public Land Survey System.....BLM, 2011

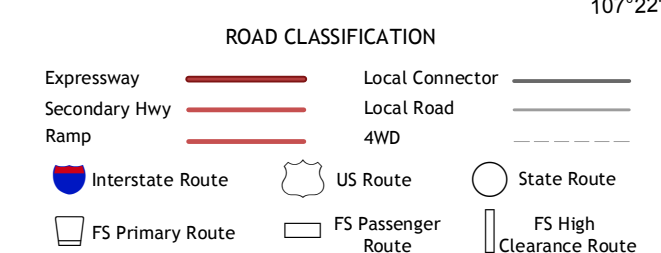


CONTOUR INTERVAL 40 FEET  
NORTH AMERICAN VERTICAL DATUM OF 1988  
This map was produced to conform with the  
National Geospatial Program US Topo Product Standard, 2011.  
A metadata file associated with this product is draft version 0.6.14



QUADRANGLE LOCATION

Fawn Creek	Lost Park	Ripple Creek
Burford	Oyster Lake	Big Marvine Park
Meadow Creek Lake	Blair Mountain	Deep Lake



Check with local Forest Service unit  
for current travel conditions and restrictions.

OYSTER LAKE, CO  
2013

ADJOINING 7.5' QUADRANGLES