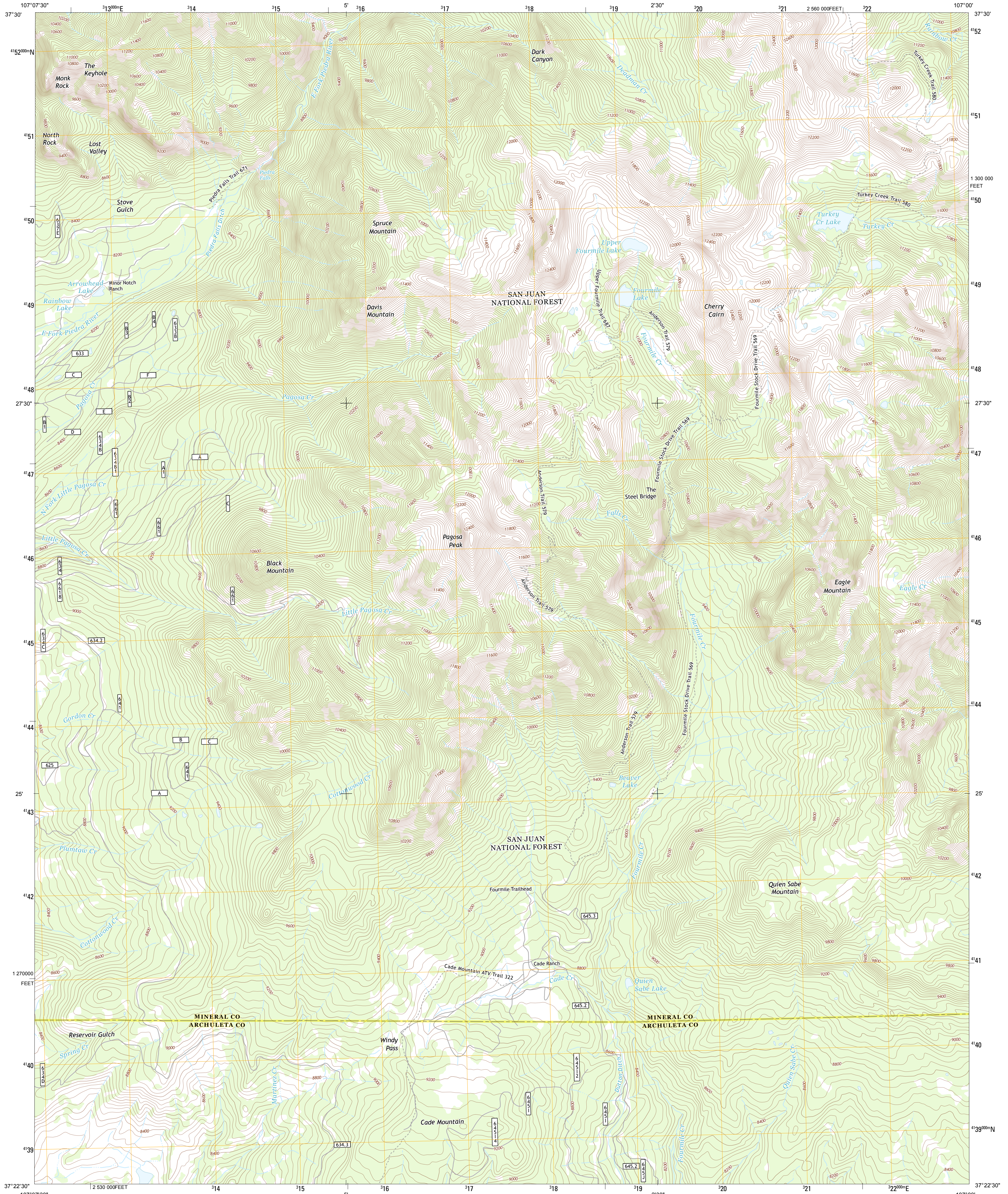




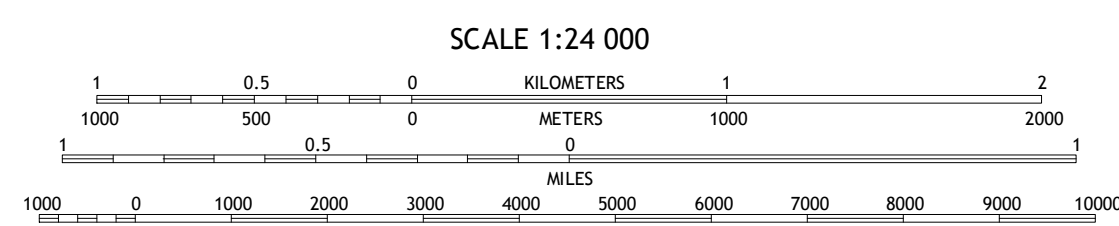
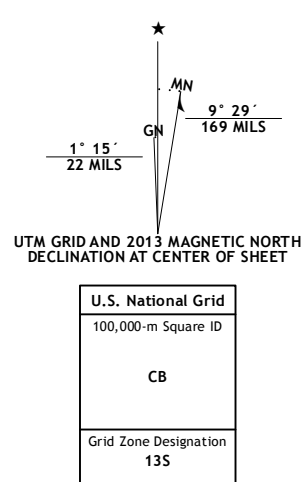
U.S. DEPARTMENT OF THE INTERIOR
U. S. GEOLOGICAL SURVEY



PAGOSA PEAK QUADRANGLE
COLORADO
7.5-MINUTE SERIES

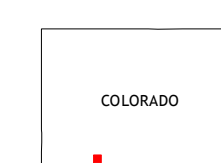


Produced by the United States Geological Survey
North American Datum of 1983 (NAD83)
World Geodetic System of 1984 (WGS84), Projection and
10 000-foot ticks: Colorado Coordinate System of 1983 (south
zone)



CONTOUR INTERVAL 40 FEET
NORTH AMERICAN VERTICAL DATUM OF 1988

This map was produced to conform with the
National Geospatial Program US Topo Product Standard, 2011.
A metadata file associated with this product is draft version 0.6.14



QUADRANGLE LOCATION

| | | |
|----------------|-------------------|------------------|
| Cimarron Peak | Palomino Mountain | South River Peak |
| Oakbrush Ridge | Pagosa Peak | Saddle Mountain |
| Chris Mountain | Pagosa Springs | Jackson Mountain |

ROAD CLASSIFICATION

| | |
|------------------|-------------------------|
| Expressway | Local Connector |
| Secondary Hwy | Local Road |
| Ramp | 4WD |
| Interstate Route | US Route |
| FS Primary Route | FS Passenger Route |
| | FS High Clearance Route |
| | State Route |

Check with local Forest Service unit
for current travel conditions and restrictions.

PAGOSA PEAK, CO
2013

ADJOINING 7.5 QUADRANGLES