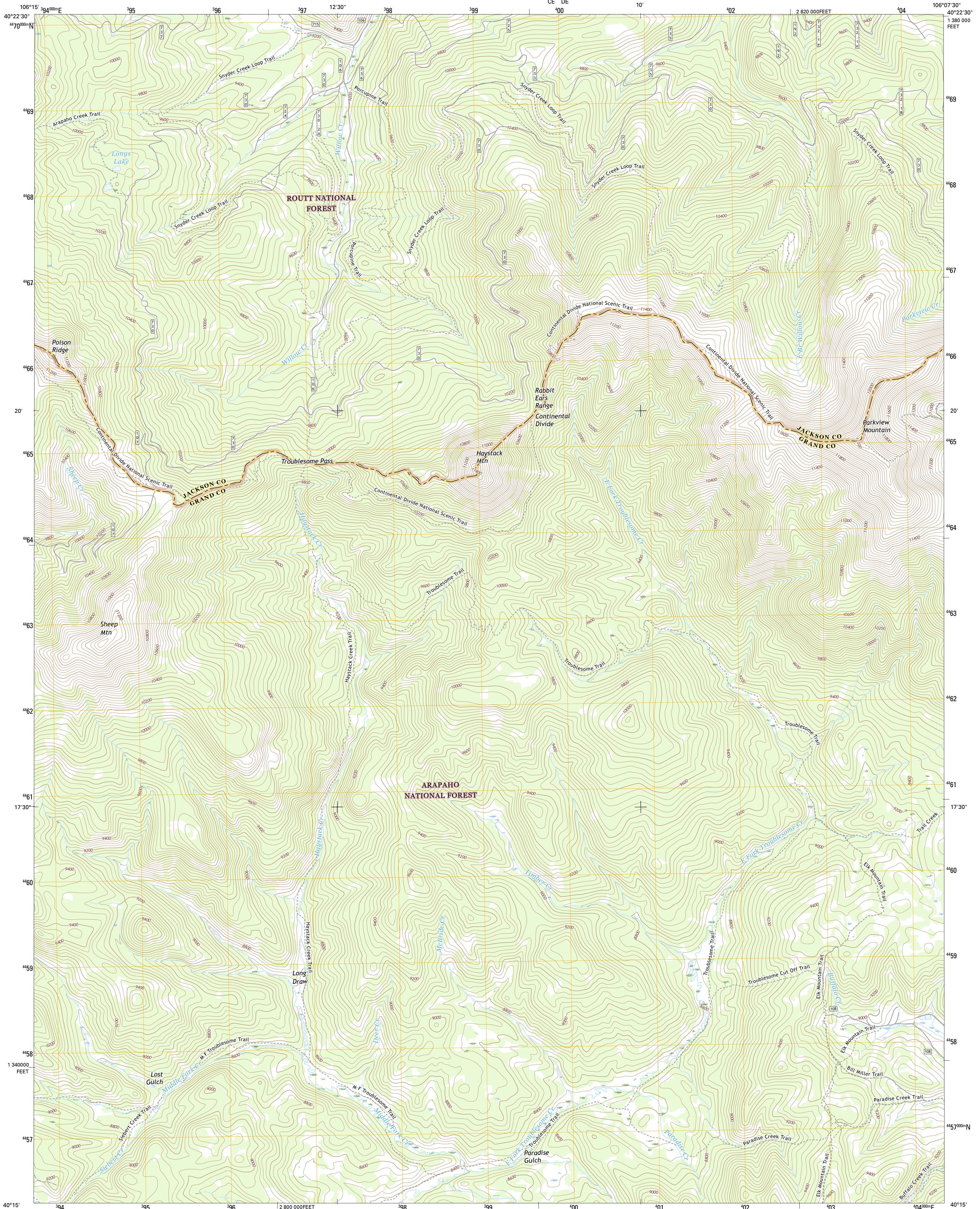




U.S. DEPARTMENT OF THE INTERIOR
U.S. GEOLOGICAL SURVEY



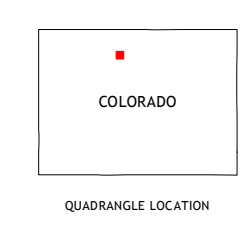
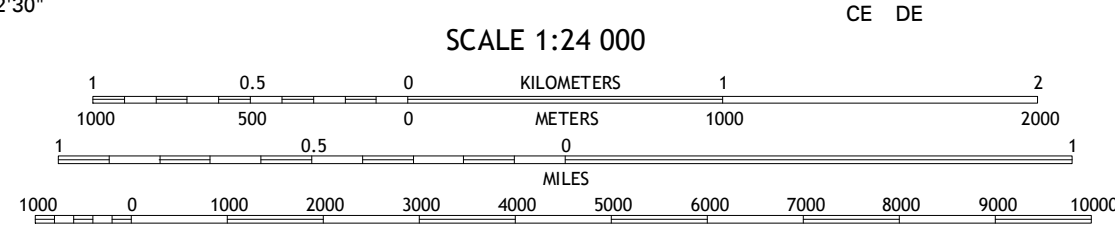
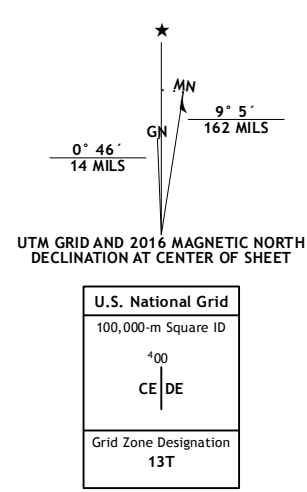
PARKVIEW MOUNTAIN QUADRANGLE
COLORADO
7.5-MINUTE SERIES



Produced by the United States Geological Survey
 North American Datum of 1983 (NAD83)
 World Geodetic System of 1984 (WGS84) - Projection and
 1 000-meter grid: Universal Transverse Mercator, Zone 13T
 10 000-foot ticks: Colorado Coordinate System of 1983 (north zone)

This map is not a legal document. Boundaries may be generalized for this map scale. Private lands within government reservations may not be shown. Obtain permission before entering private lands.

imagery.....N.A.I.P., September 2013
 Roads.....U.S. Census Bureau, 2015 - 2016
 Roads within US Forest Service Lands.....FSTopo Data with limited Forest Service updates, 2012 - 2016
 Names.....National Hydrography Dataset, 2013
 Hydrography.....National Elevation Dataset, 2013
 Contours.....National Elevation Dataset, 2002
 Boundaries.....Multiple sources; see metadata file 1972 - 2016
 Public Land Survey System.....BLM, 2011
 Wetlands.....FWS National Wetlands Inventory 1977 - 2014



ROAD CLASSIFICATION

| | |
|------------------|-------------------------|
| Expressway | Local Connector |
| Secondary Hwy | Local Road |
| Ramp | 4WD |
| Interstate Route | US Route |
| FS Primary Route | FS Passenger Route |
| | FS High Clearance Route |
| | State Route |

Check with local Forest Service unit for current travel conditions and restrictions.

ADJOINING QUADRANGLES

| | | |
|---|---|---|
| 1 | 2 | 3 |
| 4 | 5 | 6 |
| 7 | 8 | |

1 Buffalo Peak
 2 Rand
 3 Jack Creek Ranch
 4 Hyams Peak
 5 Radial Mountain
 6 Gunsight Pass
 7 Conral Peaks
 8 Cabin Creek

PARKVIEW MOUNTAIN, CO
 2016

