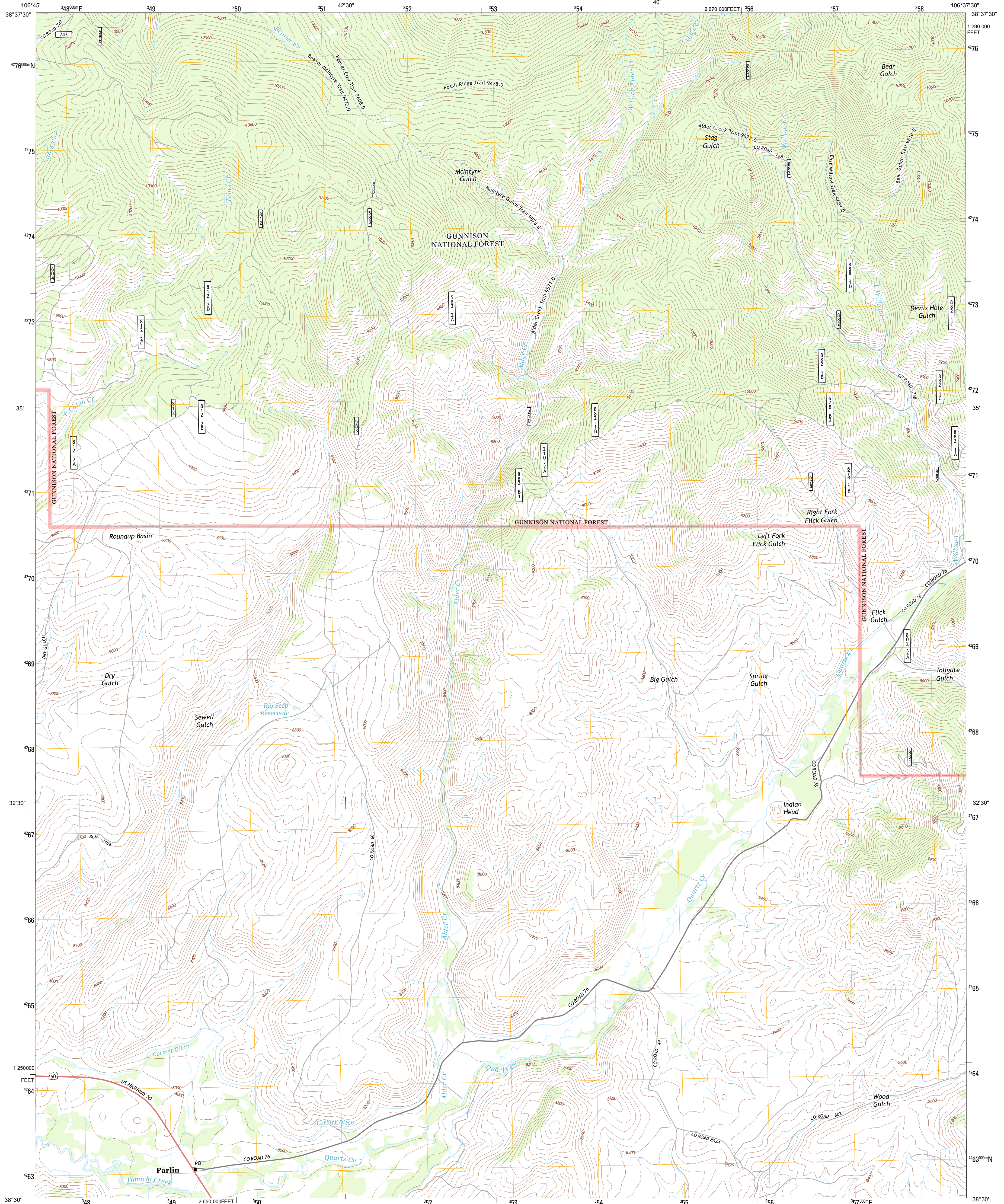




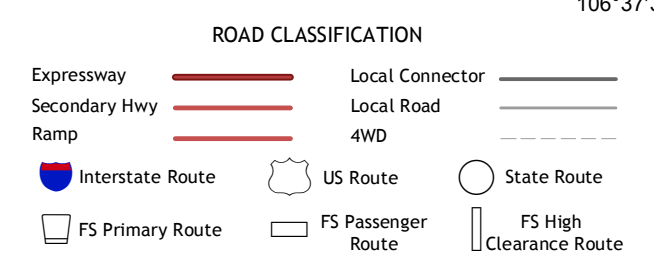
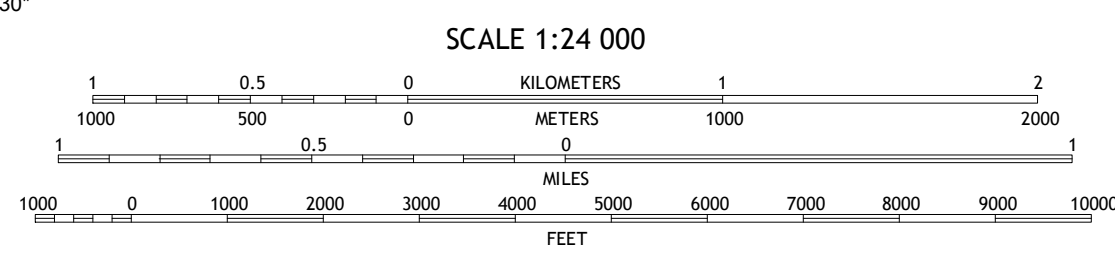
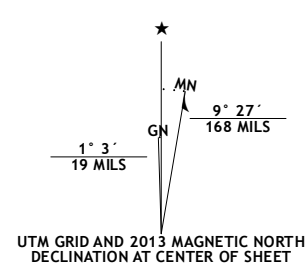
U.S. DEPARTMENT OF THE INTERIOR  
U. S. GEOLOGICAL SURVEY



PARLIN QUADRANGLE  
COLORADO-GUNNISON CO.  
7.5-MINUTE SERIES



Produced by the United States Geological Survey  
North American Datum of 1983 (NAD83)  
World Geodetic System of 1984 (WGS84). Projection and  
1 000-meter grid: Universal Transverse Mercator, Zone 13S  
10 000-foot ticks: Colorado Coordinate System of 1983 (central  
zone)



Imagery.....NAIP, August 2011 - September 2011  
Roads.....©2006-2012 TomTom  
Roads within US Forest Service Lands.....FS Topo Data  
with limited Forest Service updates, 2013  
Names.....GNIS, 2013  
Hydrography.....National Hydrography Dataset, 2011  
Contours.....National Elevation Dataset, 2004  
Boundaries.....Census, IBWC, IBC, USGS, 1972 - 2012  
Public Land Survey System.....BLM, 2011

U.S. National Grid 100,000-m Square ID	CC
Grid Zone Designation	13S

CONTOUR INTERVAL 40 FEET  
NORTH AMERICAN VERTICAL DATUM OF 1988  
This map was produced to conform with the  
National Geospatial Program US Topo Product Standard, 2011.  
A metadata file associated with this product is draft version 0.6.14

QUADRANGLE LOCATION		
Almont	Crystal Creek	Fairview Peak
Signal Peak	Parlin	Pitkin
Irish	Houston Gulch	Doyleville

Check with local Forest Service unit  
for current travel conditions and restrictions.

PARLIN, CO  
2013

ADJOINING 7.5 QUADRANGLES