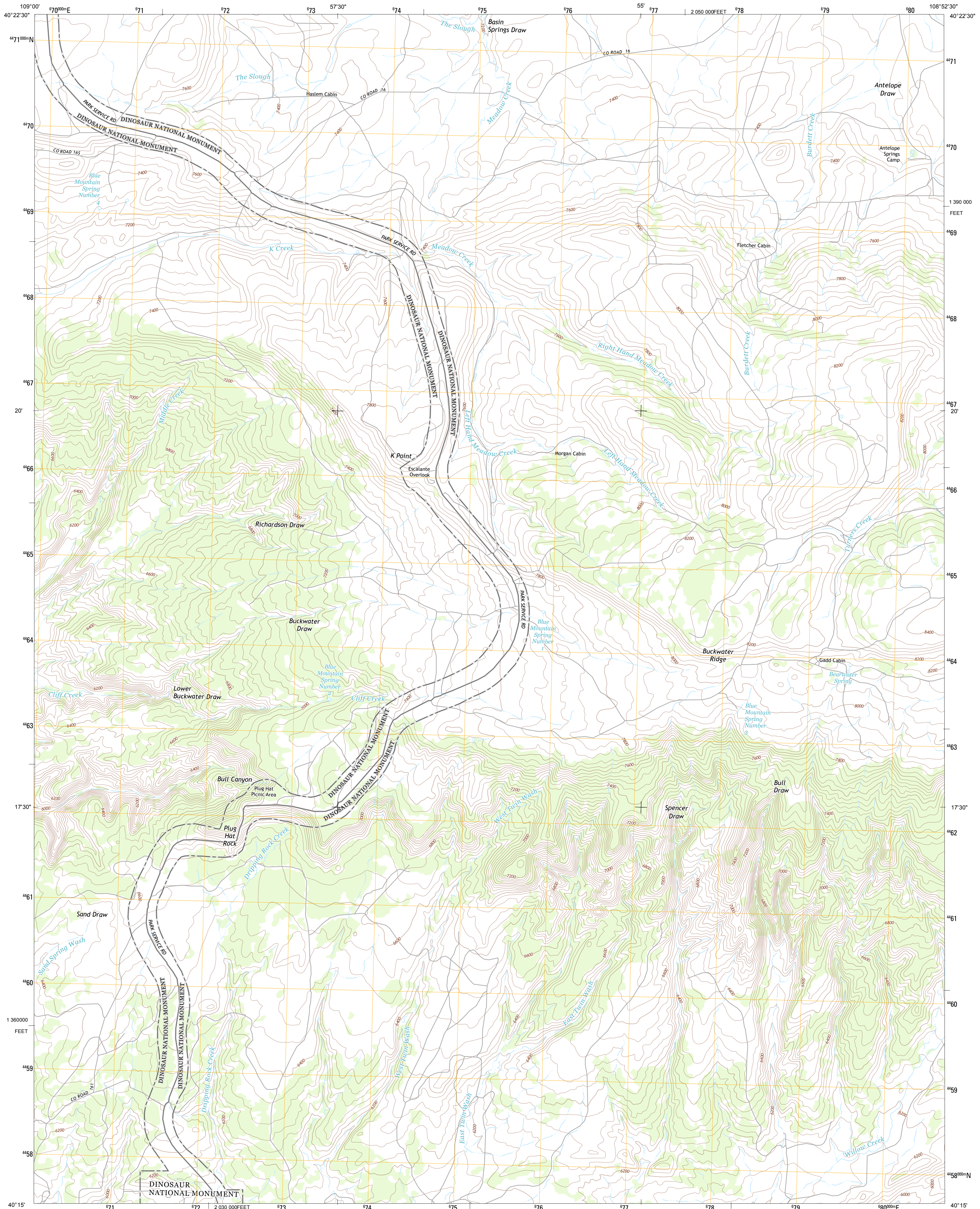




U.S. DEPARTMENT OF THE INTERIOR  
U. S. GEOLOGICAL SURVEY

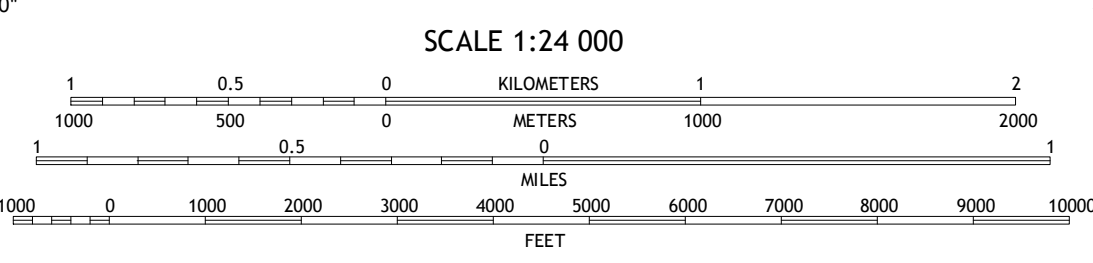
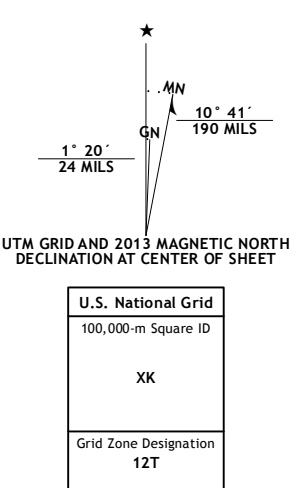


PLUG HAT ROCK QUADRANGLE  
COLORADO-MOFFAT CO.  
7.5-MINUTE SERIES

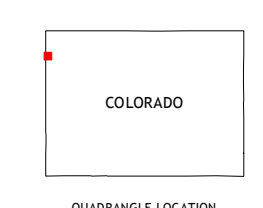


Produced by the United States Geological Survey  
North American Datum of 1983 (NAD83)  
World Geodetic System of 1984 (WGS84), Projection and  
1 000 meter grid: Universal Transverse Mercator, Zone 12T  
10 000-foot ticks: Colorado Coordinate System of 1983 (north  
zone)

Imagery.....NAIP, July 2011  
Roads.....©2006-2012, TomTom  
Names.....GNS, 2013  
Hydrography.....National Hydrography Dataset, 2011  
Contours.....National Elevation Dataset, 2003  
Boundaries.....Census, IBW, IBC, USGS, 1972 - 2012  
Public Land Survey System.....BLM, 2011

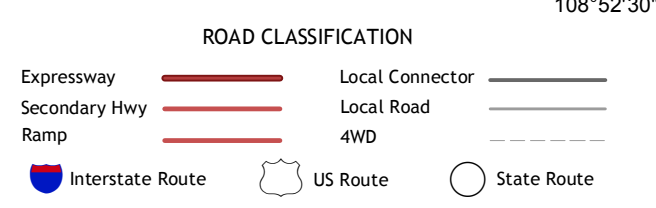


CONTOUR INTERVAL 40 FEET  
NORTH AMERICAN VERTICAL DATUM OF 1988  
This map was produced to conform with the  
National Geospatial Program US Topo Product Standard, 2011.  
A metadata file associated with this product is draft version 0.6.14



QUADRANGLE LOCATION

Shantz Reservoir	Hells Canyon	Tanks Peak
Snake John Reef	Plug Hat Rock	Lazy Y Point
Dinosaur	Mellen Hill	Rangely NE



PLUG HAT ROCK, CO  
2013

ADJOINING 7.5 QUADRANGLES