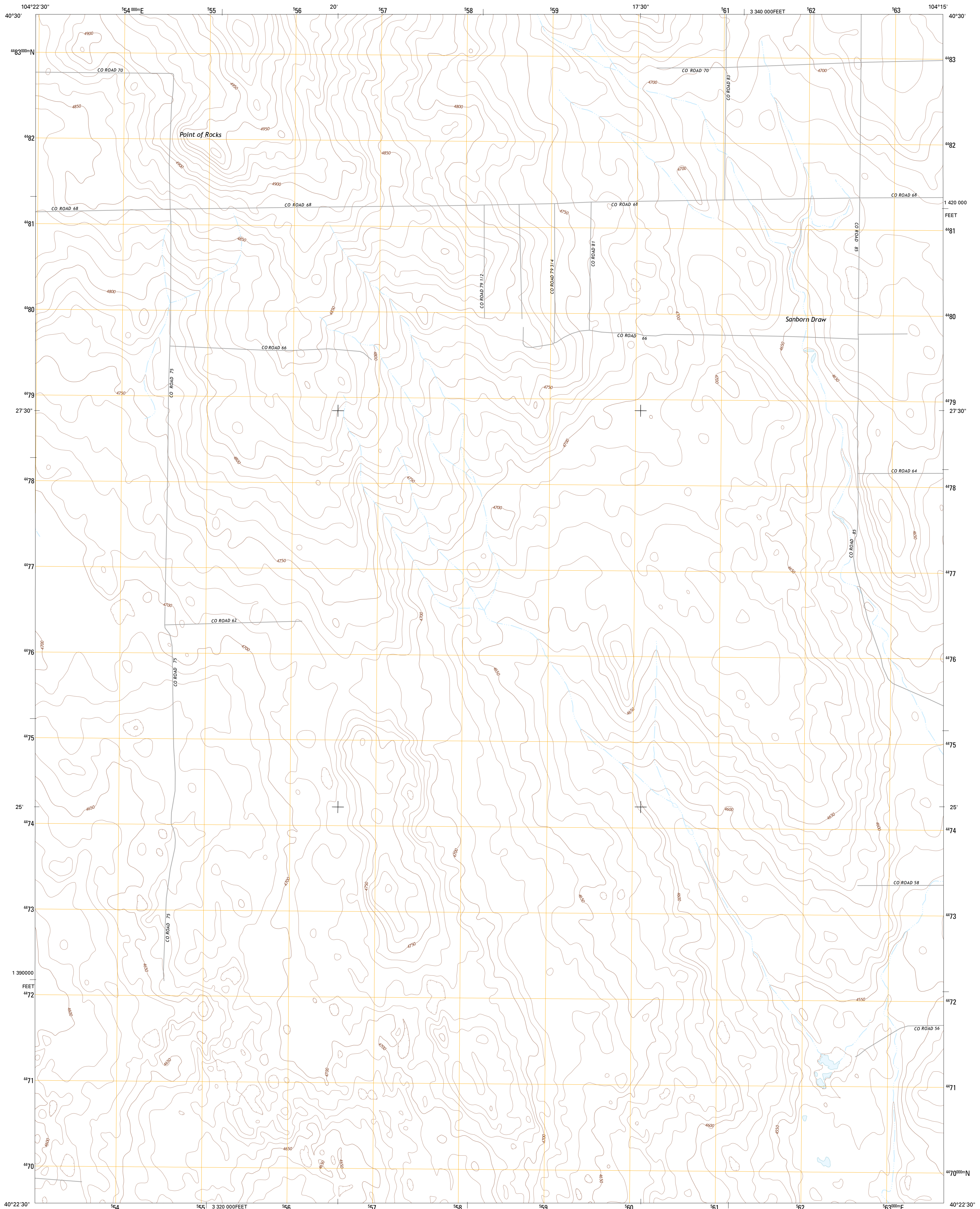




U.S. DEPARTMENT OF THE INTERIOR  
U. S. GEOLOGICAL SURVEY

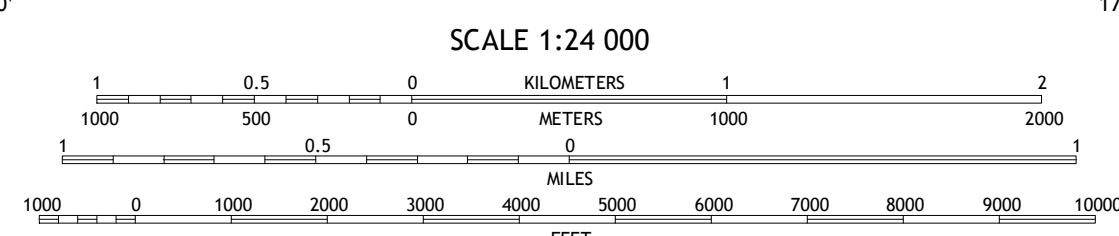
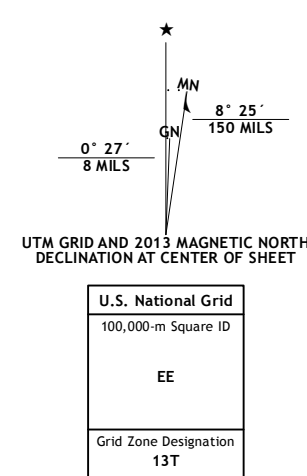


POINT OF ROCKS QUADRANGLE  
COLORADO-WELD CO.  
7.5-MINUTE SERIES

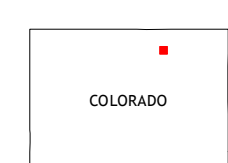


Produced by the United States Geological Survey  
North American Datum of 1983 (NAD83)  
World Geodetic System of 1984 (WGS84) Projection and  
1 000-meter grid: Universal Transverse Mercator, Zone 13T  
10 000-foot ticks: Colorado Coordinate System of 1983 (north zone)

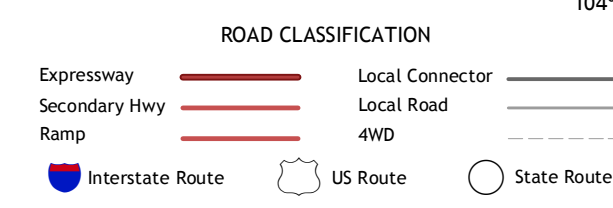
Imagery.....NAIP, July 2011  
Roads.....C2006-2012, TomTom  
Names.....GNIS, 2013  
Hydrography.....National Hydrography Dataset, 2011  
Contours.....National Elevation Dataset, 2007  
Boundaries.....Census, BWC, IBC, USGS, 1972-2012  
Public Land Survey System.....BLM, 2011



This map was produced to conform with the National Geospatial Program US Topo Product Standard, 2011. A metadata file associated with this product is draft version 0.6.14



Cornish	Fosston	Dutch Girl Lake
Barnesville	Point of Rocks	Greasewood Lake
Hardin	Dearfield	Masters



POINT OF ROCKS, CO  
2013

ADJOINING 7.5 QUADRANGLES