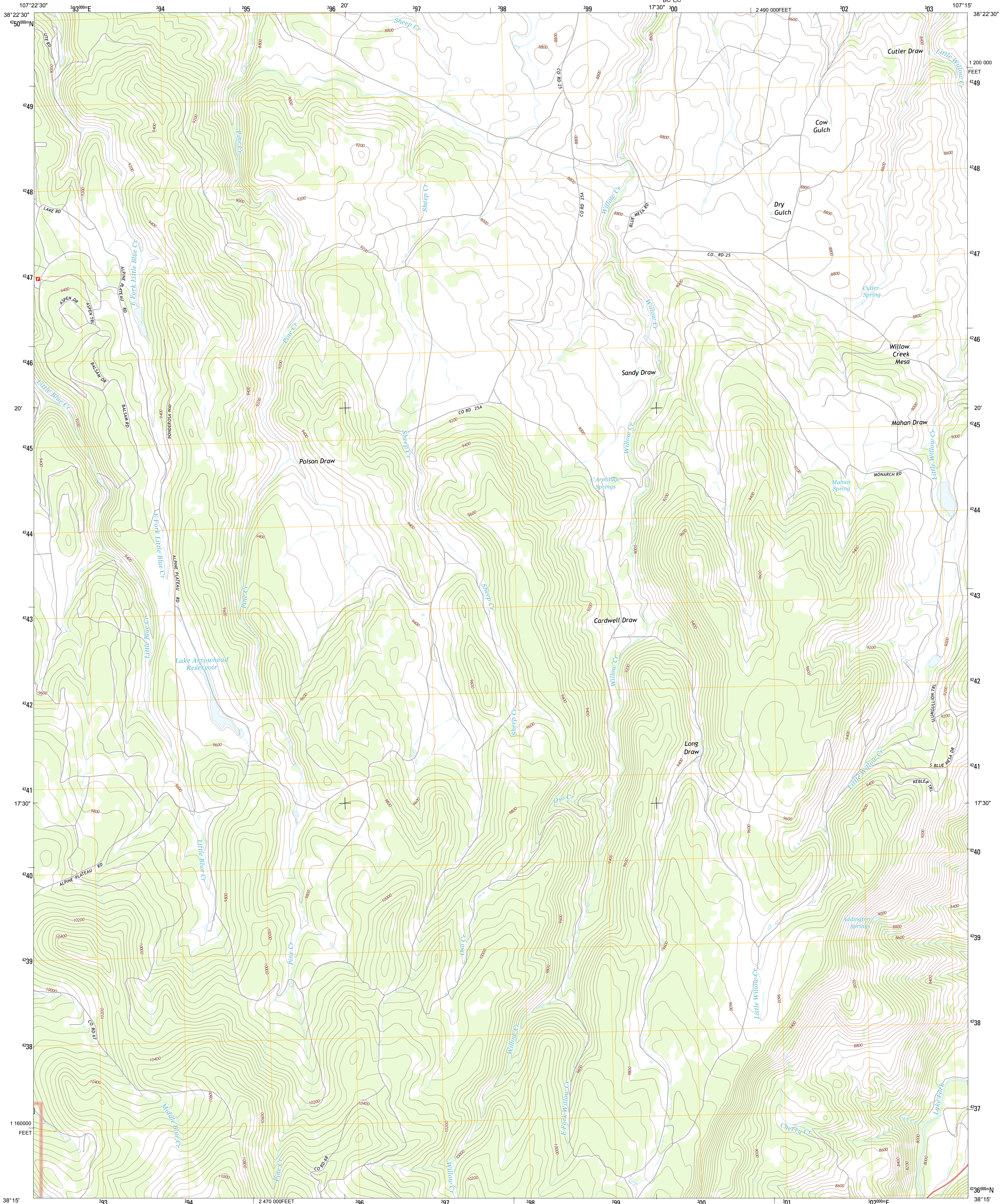




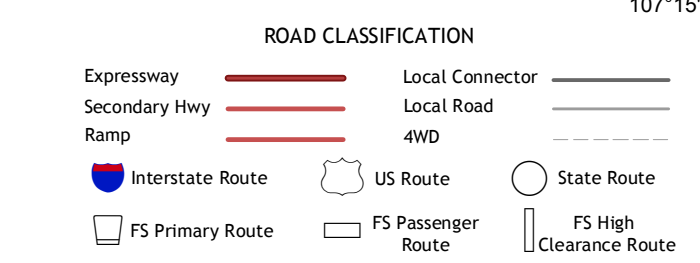
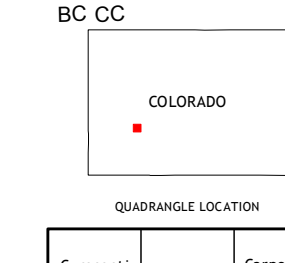
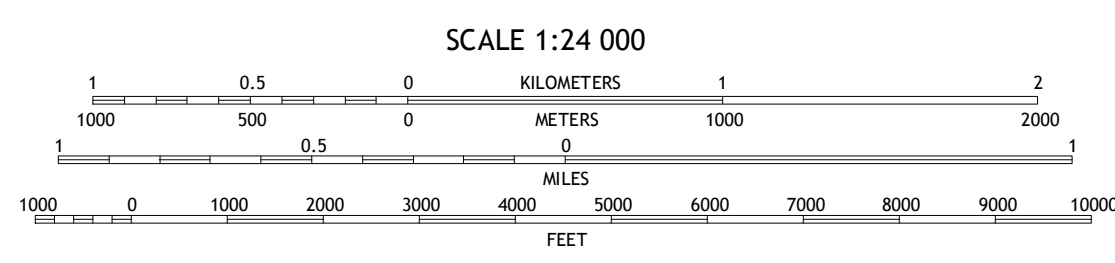
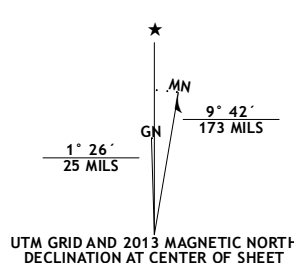
U.S. DEPARTMENT OF THE INTERIOR
U. S. GEOLOGICAL SURVEY



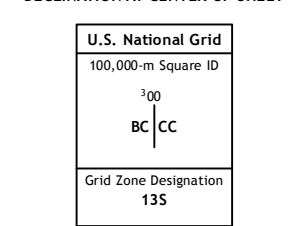
POISON DRAW QUADRANGLE
COLORADO-GUNNISON CO.
7.5-MINUTE SERIES



Produced by the United States Geological Survey
North American Datum of 1983 (NAD83)
World Geodetic System of 1984 (WGS84) Projection and
1 000-meter grid; Universal Transverse Mercator, Zone 13S
10 000-foot ticks; Colorado Coordinate System of 1983 (central zone)



Imagery.....NAIP, August 2011
Roads.....©2006-2012 TomTom
Roads within US Forest Service Lands.....FSTopo Data
with limited Forest Service updates, 2013
Names.....©2011 GNS, 2013
Hydrography.....National Hydrography Dataset, 2011
Contours.....National Elevation Dataset, 2003
Boundaries.....Census, IBWC, IBC, USGS, 1972 - 2012
Public Land Survey System.....BLM, 2011



CONTOUR INTERVAL 40 FEET
NORTH AMERICAN VERTICAL DATUM OF 1988

This map was produced to conform with the
National Geospatial Program US Topo Product Standard, 2011.
A metadata file associated with this product is draft version 0.6.14

QUADRANGLE LOCATION

Careant Needle	Sapinero	Carpenter Ridge
Lost Lake	Poison Draw	Gateway
Sheep Mountain	Alpine Plateau	Powderhorn Lakes

Check with local Forest Service unit
for current travel conditions and restrictions.

POISON DRAW, CO
2013

ADJOINING 7.5 QUADRANGLES