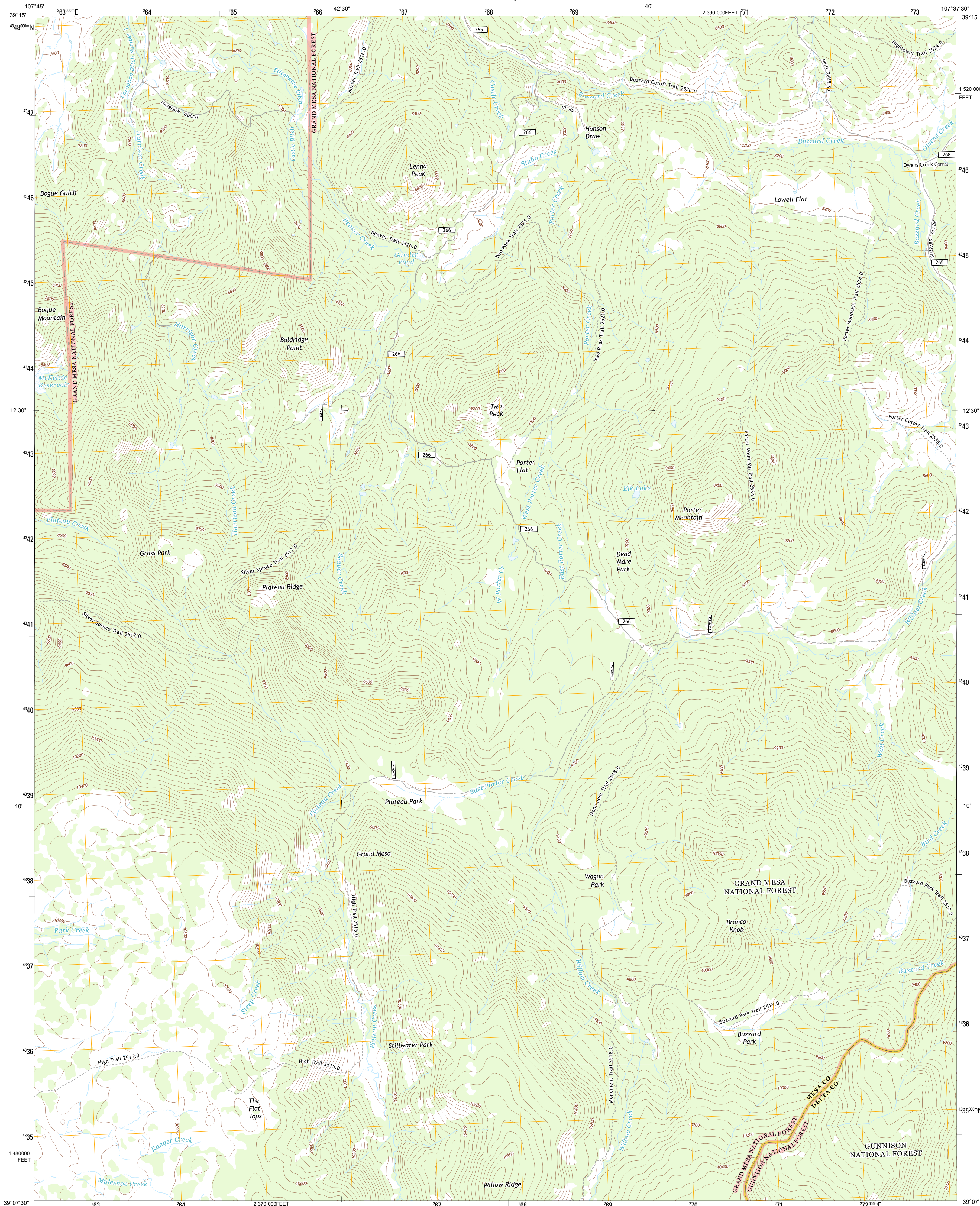




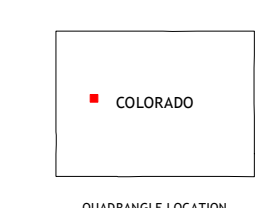
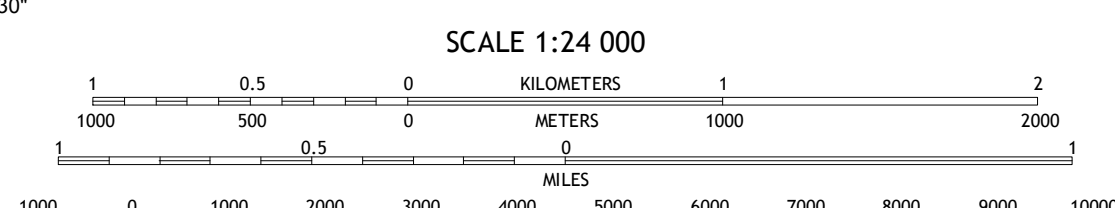
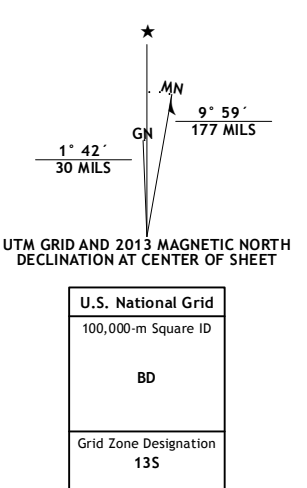
U.S. DEPARTMENT OF THE INTERIOR  
U. S. GEOLOGICAL SURVEY



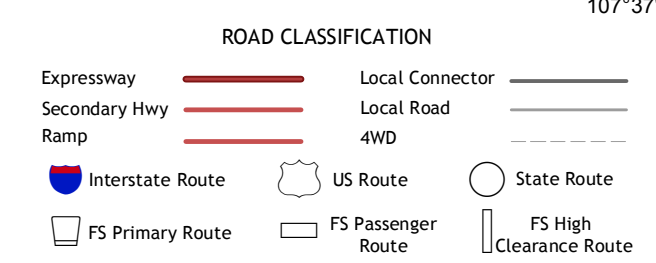
PORTER MOUNTAIN QUADRANGLE  
COLORADO  
7.5-MINUTE SERIES



Produced by the United States Geological Survey  
North American Datum of 1983 (NAD83)  
World Geodetic System of 1984 (WGS84) Projection and  
1 000-meter grid: Universal Transverse Mercator, Zone 13S  
10 000-foot ticks: Colorado Coordinate System of 1983 (central zone)



South Mamm Peak	Hightower Mountain	Flatiron Mountain
Vega Reservoir	Porter Mountain	Spruce Mountain
Leon Peak	Chalk Mountain	Electric Mountain



Check with local Forest Service unit for current travel conditions and restrictions.

PORTER MOUNTAIN, CO  
2013

CONTOUR INTERVAL 40 FEET  
NORTH AMERICAN VERTICAL DATUM OF 1988

This map was produced to conform with the National Geospatial Program US Topo Product Standard, 2011. A metadata file associated with this product is draft version 0.6.14

Imagery.....NAIP, July 2009 - July 2011  
Roads.....US Forest Service Lands, 2006-2012  
Roads within US Forest Service Lands with limited Forest Service updates, 2013  
Names.....GNIS, 2013  
Hydrography.....National Hydrography Dataset, 2011  
Contours.....National Elevation Dataset, 2006  
Boundaries.....Census, IBWC, IBC, USGS, 1972 - 2012  
Public Land Survey System.....BLM, 2011

ADJOINING 7.5 QUADRANGLES