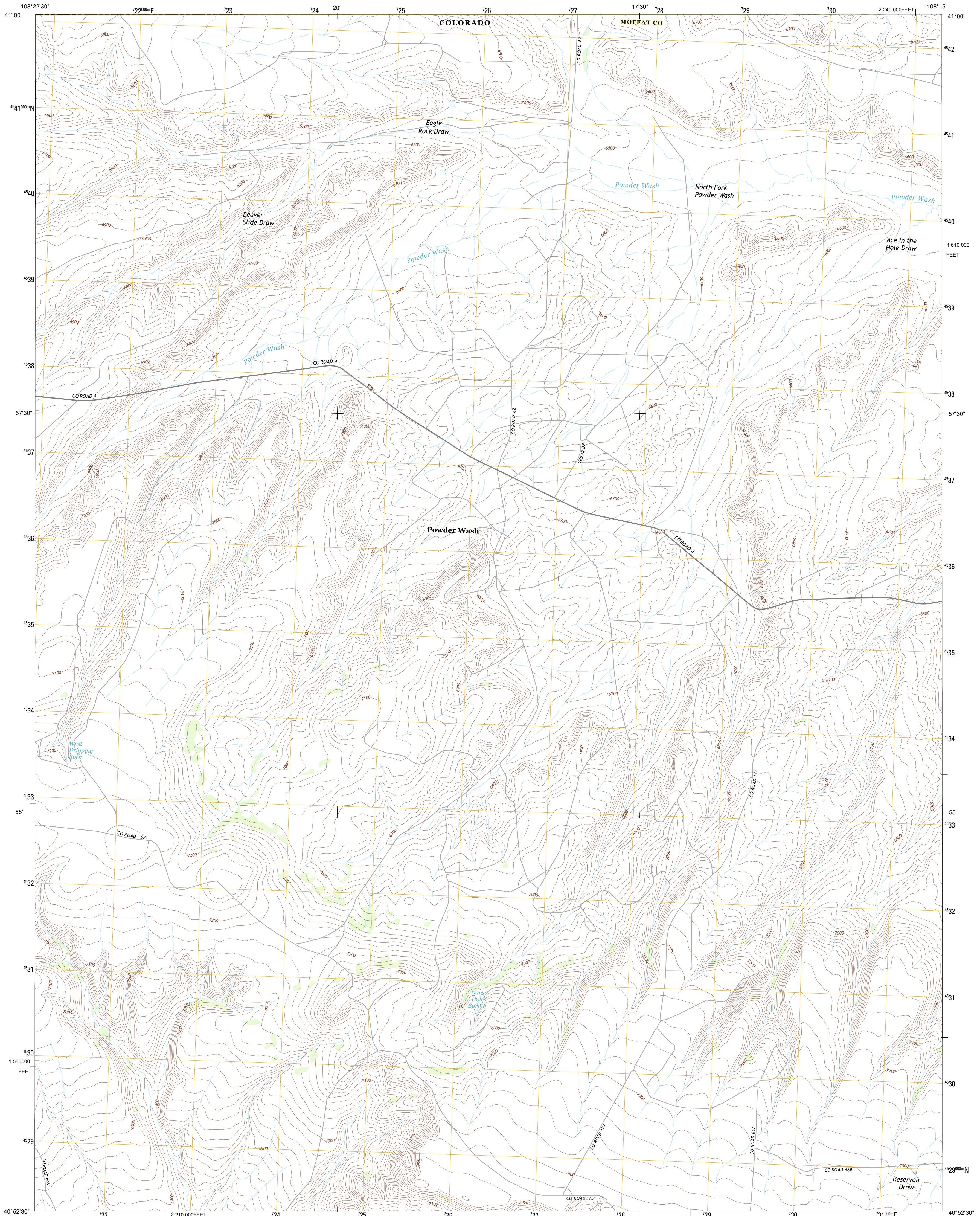




U.S. DEPARTMENT OF THE INTERIOR
U. S. GEOLOGICAL SURVEY

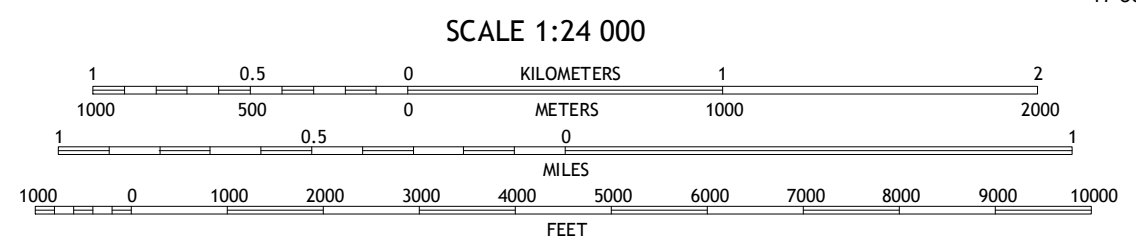
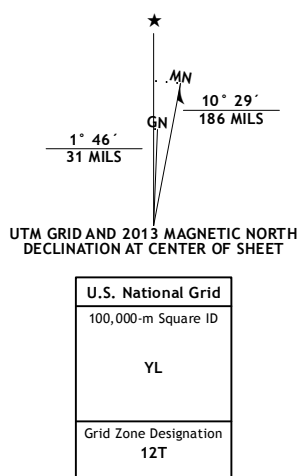


POWDER WASH QUADRANGLE
COLORADO-MOFFAT CO.
7.5-MINUTE SERIES

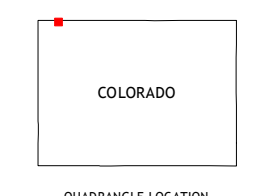


Produced by the United States Geological Survey
North American Datum of 1983 (NAD83)
World Geodetic System of 1984 (WGS84). Projection and
1 000-meter grid: Universal Transverse Mercator, Zone 12T
10 000-foot ticks: Colorado Coordinate System of 1983 (north
zone)

Imagery.....NAIP, July 2011
Roads.....©2006-2012 TomTom
Names.....GNIS, 2013
Hydrography.....National Hydrography Dataset, 2011
Contours.....National Elevation Dataset, 2003
Boundaries.....Census, IBWC, BC, USGS, 1972 - 2012
Public Land Survey System.....BLM, 2011

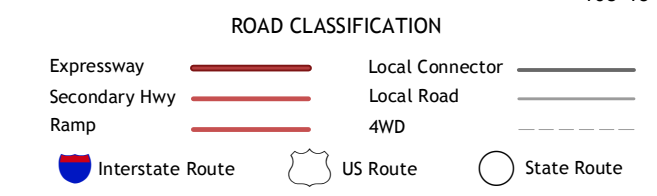


This map was produced to conform with the
National Geospatial Program US Topo Product Standard, 2011.
A metadata file associated with this product is draft version 0.6.14



QUADRANGLE LOCATION

Cow Creek Reservoir SW	Upper Powder Spring	Powder Mountain
Coffeepot Spring	Powder Wash	Reservoir Draw
Shepherders Springs	Ling Spring	The Nipple



POWDER WASH, CO
2013

ADJOINING 7.5 QUADRANGLES