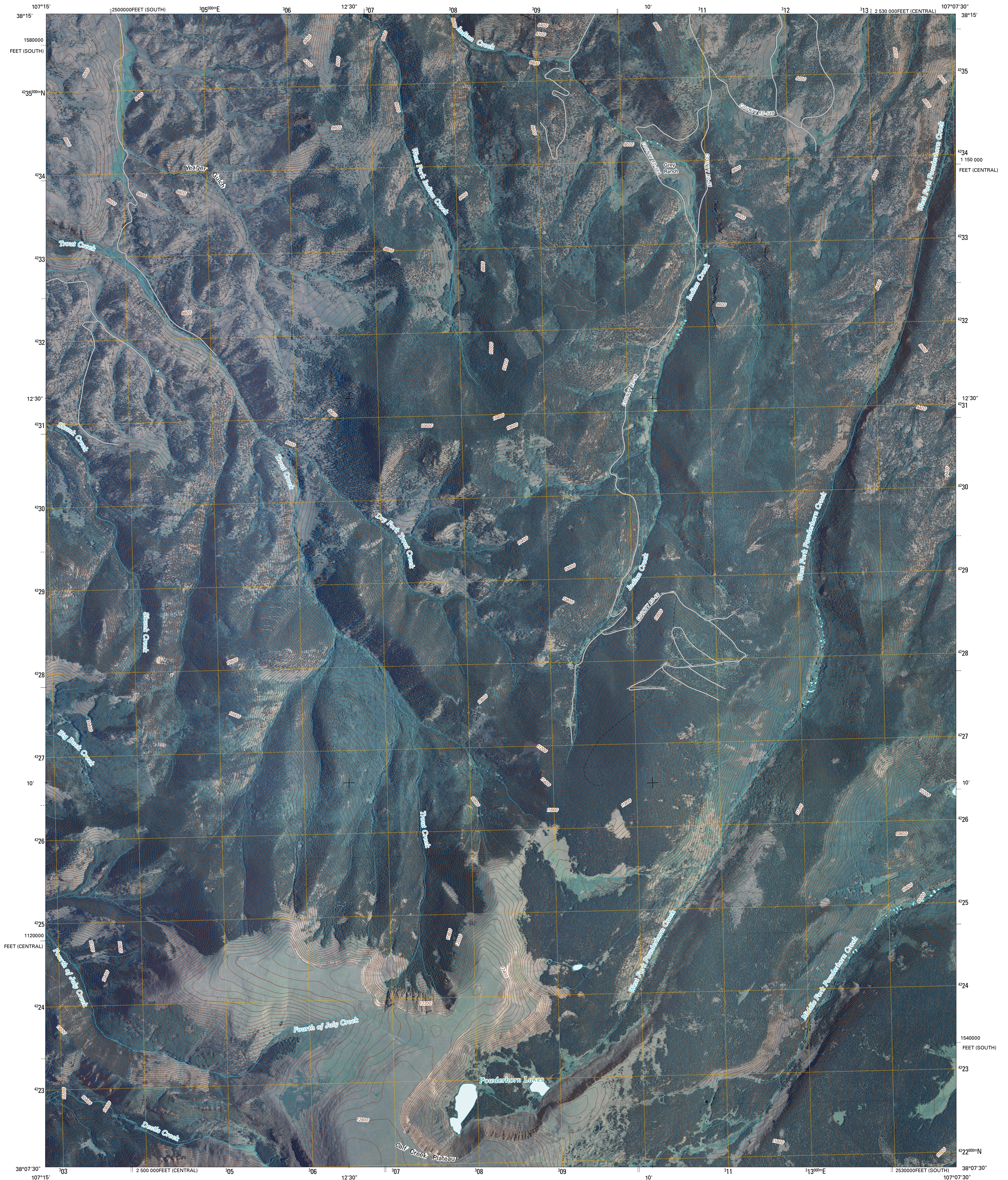




U.S. DEPARTMENT OF THE INTERIOR
U. S. GEOLOGICAL SURVEY

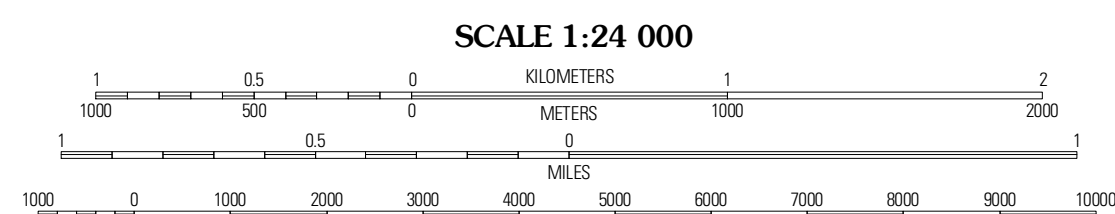
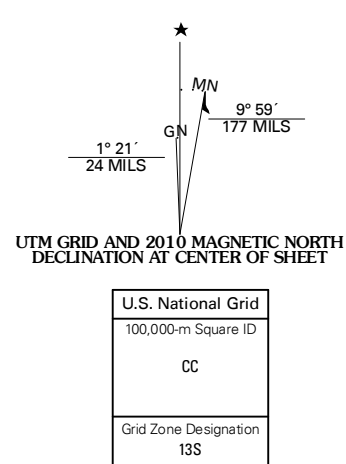


POWDERHORN LAKES QUADRANGLE
COLORADO
7.5-MINUTE SERIES



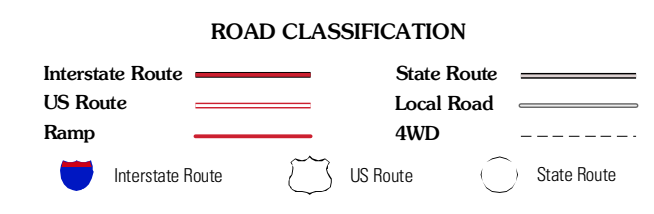
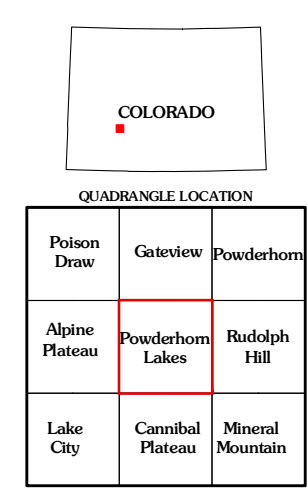
Produced by the United States Geological Survey
North American Datum of 1983 (NAD83)
World Geodetic System of 1984 (WGS84) Projection and
1 000-meter grid; Universal Transverse Mercator, Zone 13S
10 000-foot ticks; Colorado Coordinate System of 1983
(central and south zones)

Imagery: NAIP, July 2009
Roads: 2006-2010 Tele Atlas
Names: GNIS, 2008
Hydrography: National Hydrography Dataset, 2009
Contours: National Elevation Dataset, 2003



CONTOUR INTERVAL 40 FEET
NORTH AMERICAN VERTICAL DATUM OF 1988

This map was produced to conform with version 0.5.10 of the
draft USGS Standards for 7.5-Minute Quadrangle Maps.
A metadata file associated with this product is draft version 0.5.11



POWDERHORN LAKES, CO
2010