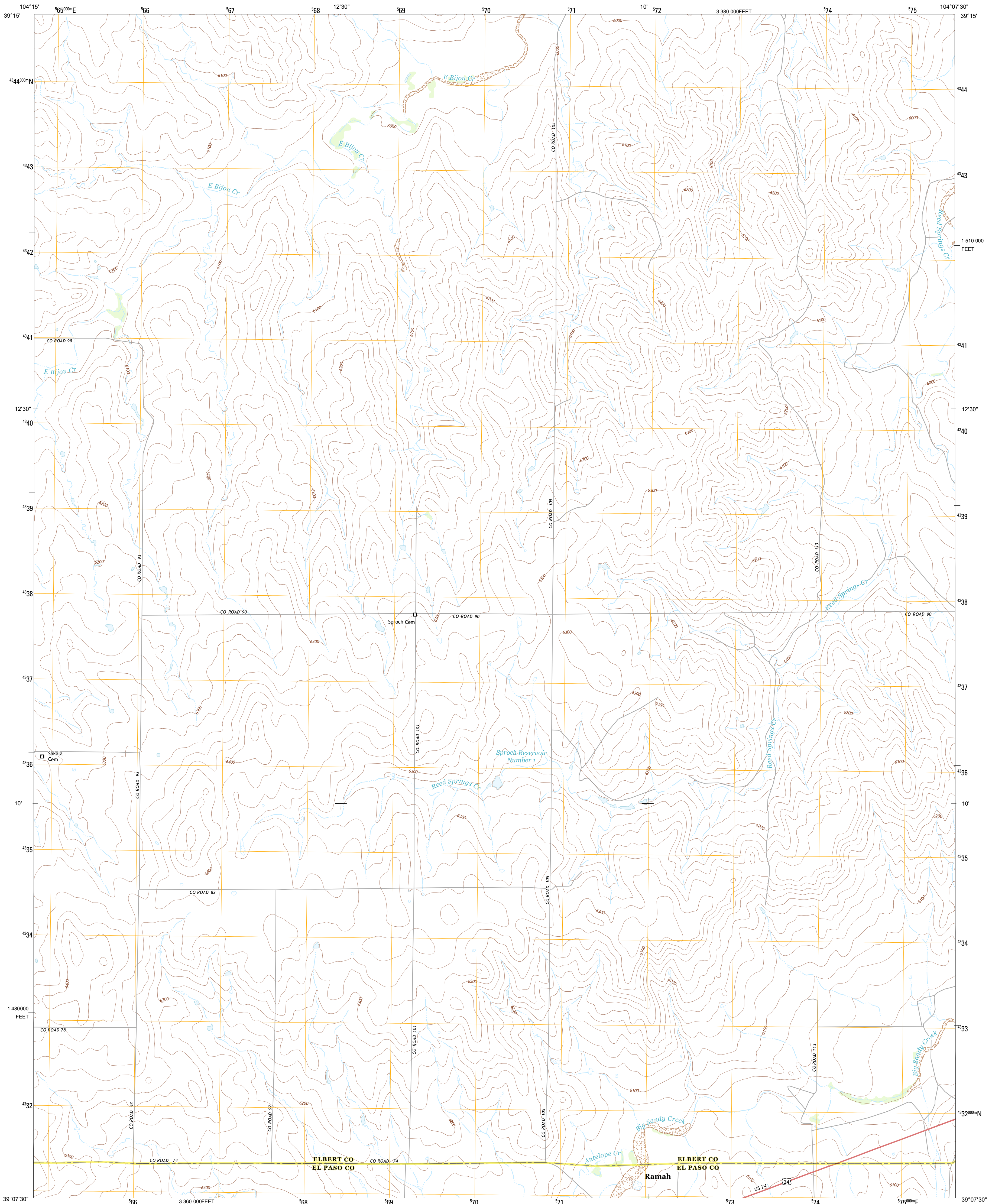




U.S. DEPARTMENT OF THE INTERIOR
U. S. GEOLOGICAL SURVEY

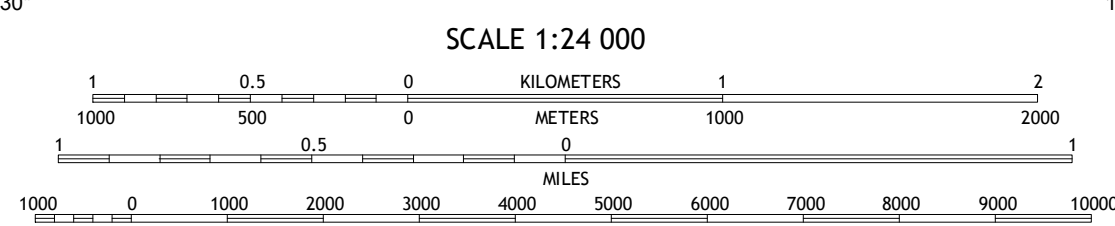
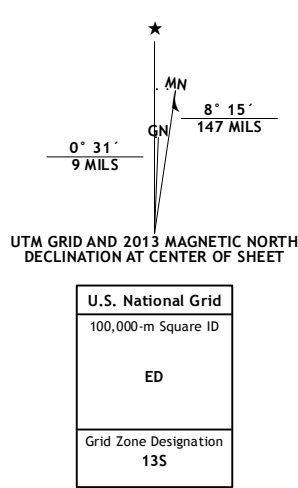


RAMAH NORTH QUADRANGLE
COLORADO
7.5-MINUTE SERIES



Produced by the United States Geological Survey
North American Datum of 1983 (NAD83)
World Geodetic System of 1984 (WGS84), Projection and
1 000-meter grid: Universal Transverse Mercator, Zone 13S
10 000-foot ticks: Colorado Coordinate System of 1983 (central
zone)

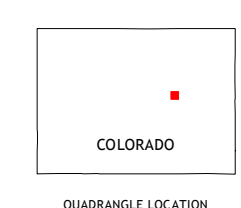
Imagery.....NAIP, July 2011
Roads.....2006-2012 TomTom
Names.....GNIS, 2013
Hydrography.....National Hydrography Dataset, 2011
Contours.....National Elevation Dataset, 2007
Boundaries.....Census, BVC, USGS, 1972-2012
Public Land Survey System.....BLM, 2011



SCALE 1:24 000

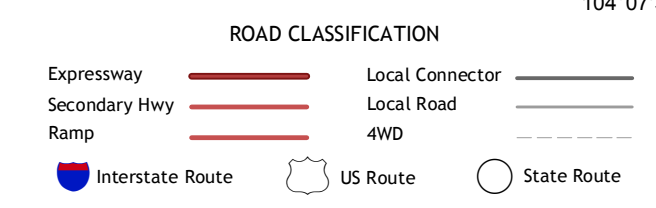
CONTOUR INTERVAL 20 FEET
NORTH AMERICAN VERTICAL DATUM OF 1988

This map was produced to conform with the
National Geospatial Program US Topo Product Standard, 2011.
A metadata file associated with this product is draft version 0.6.14



QUADRANGLE LOCATION

Big Gulch	Bijou SW	Kuhns Crossing
Fondra	Ramah North	Simla
Calhan	Ramah South	Alta Vista



RAMAH NORTH, CO
2013

ADJOINING 7.5 QUADRANGLES