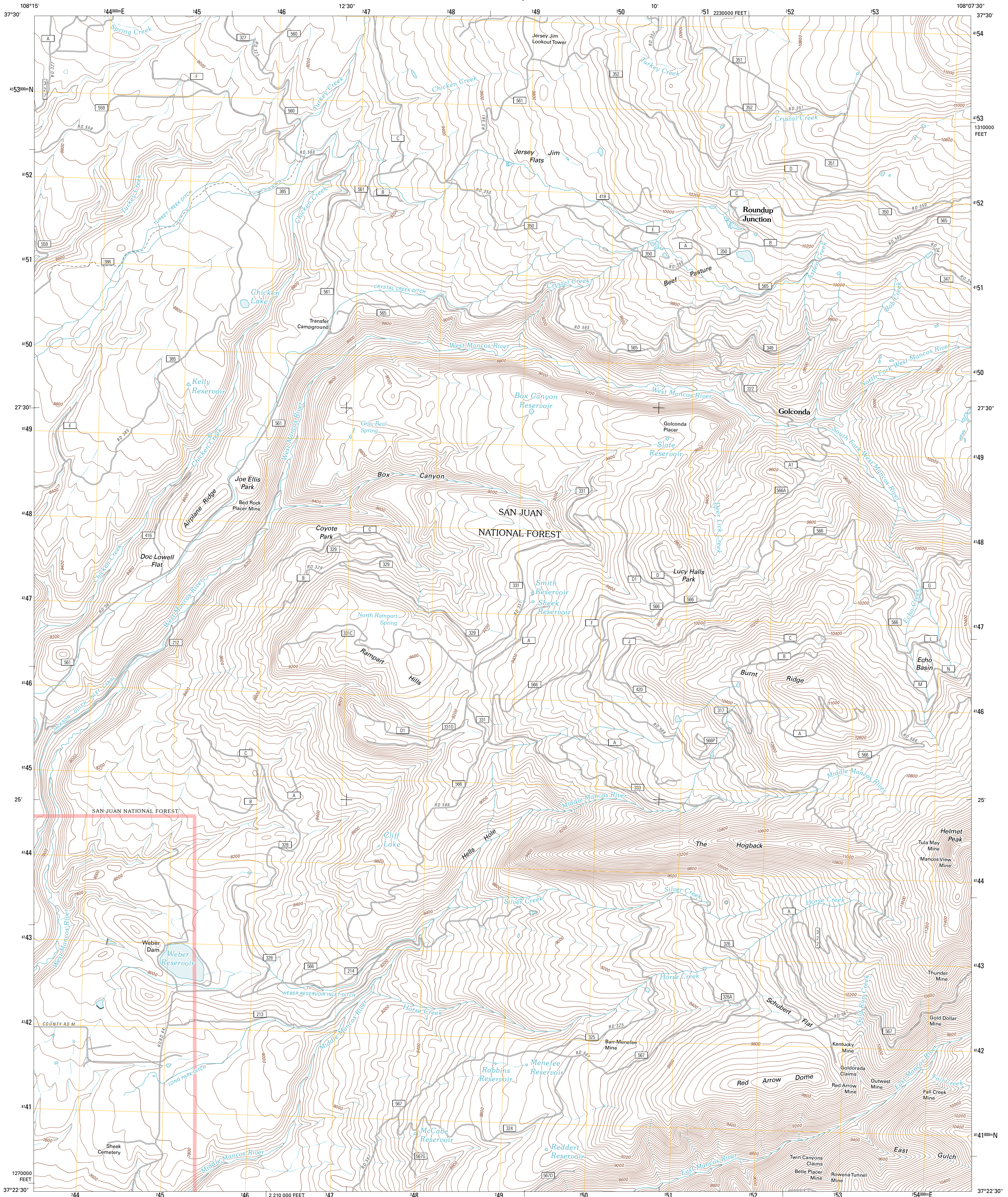




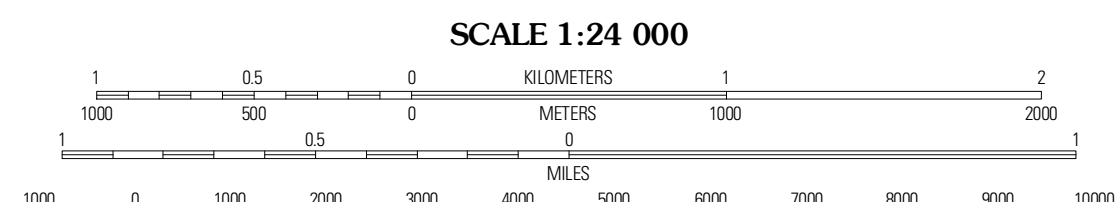
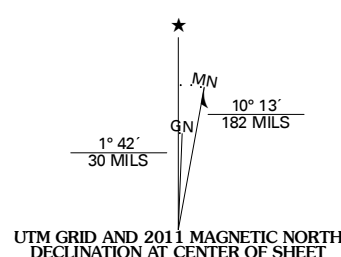
U.S. DEPARTMENT OF THE INTERIOR
U. S. GEOLOGICAL SURVEY



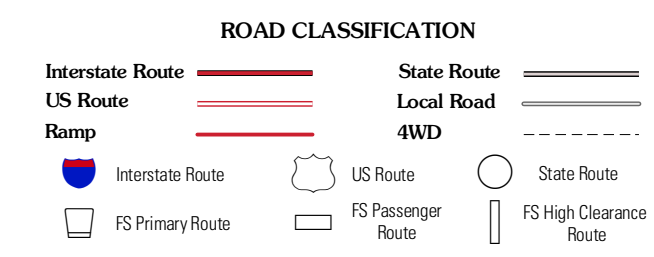
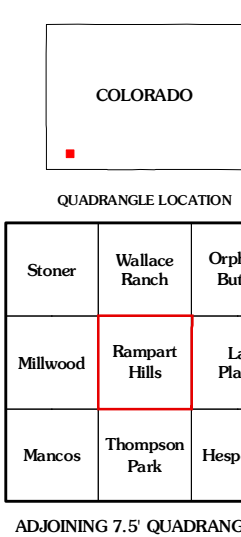
RAMPART HILLS QUADRANGLE
COLORADO
7.5-MINUTE SERIES



Produced by the United States Geological Survey
North American Datum of 1983 (NAD83)
World Geodetic System of 1984 (WGS84). Projection and
1000-meter grid: Universal Transverse Mercator, Zone 12S
10 000-foot ticks: Colorado Coordinate System of 1983
(south zone)



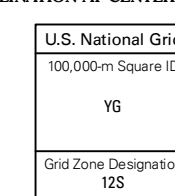
CONTOUR INTERVAL 40 FEET
NORTH AMERICAN VERTICAL DATUM OF 1988
This map was produced to conform with version 0.5.10 of the
draft USGS Standards for 7.5-Minute Quadrangle Maps.
A metadata file associated with this product is draft version 0.5.12



Check with local Forest Service unit
for current travel conditions and restrictions.

RAMPART HILLS, CO
2011

Imagery: NADIP, July 2009
Roads: ©2006-2010 Tele Atlas
Roads within US Forest Service Lands: FSTopo Data
with limited Forest Service updates, 2009
Names: GNS, 2010
Hydrography: National Hydrography Dataset, 2009
Contours: National Elevation Dataset, 2001



QUADRANGLE LOCATION		
Stoner	Wallace Ranch	Orphan Butte
Millwood	Rampart Hills	La Plata
Manitou	Thompson Park	Hesperus

ADJOINING 7.5 QUADRANGLES