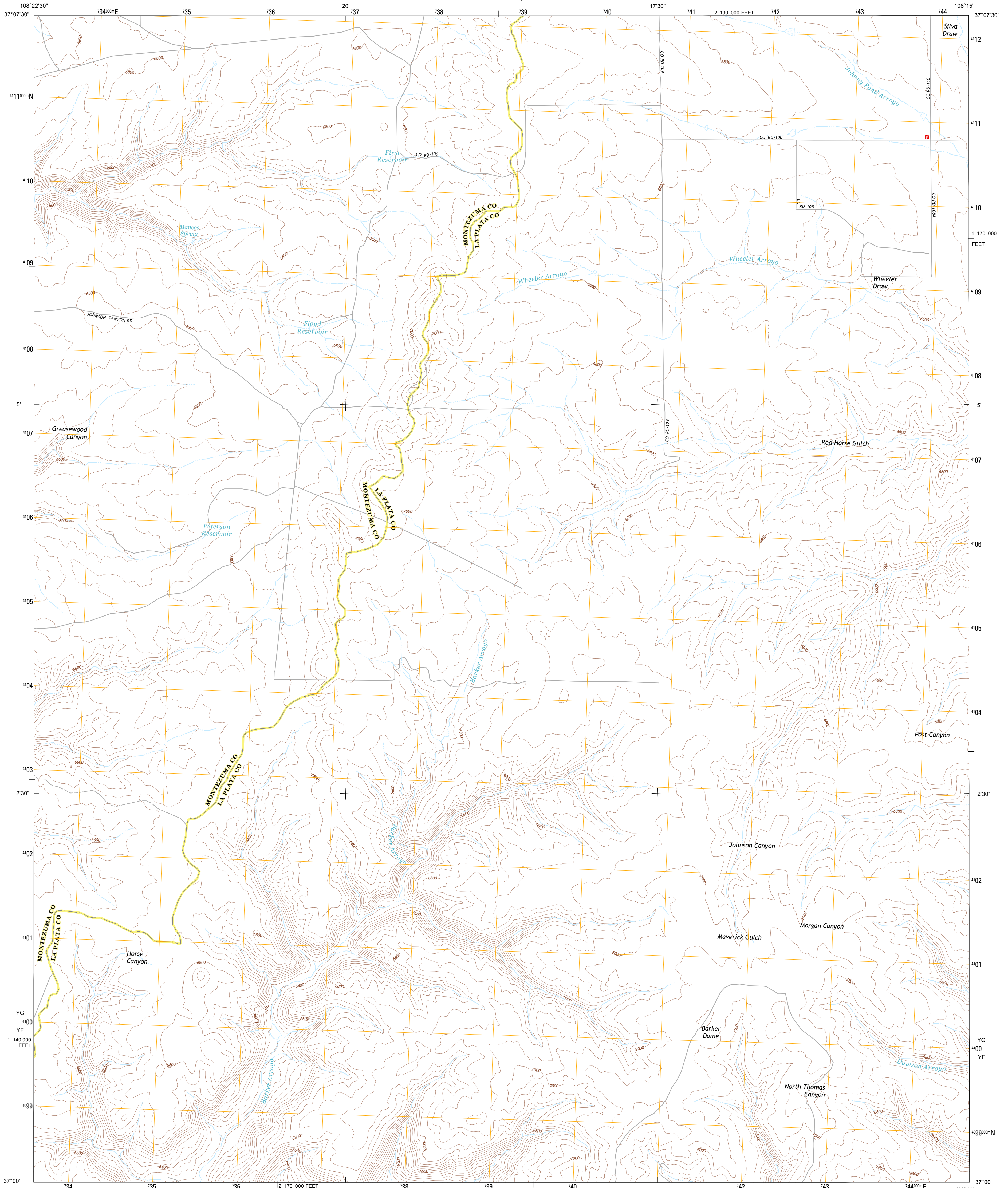




U.S. DEPARTMENT OF THE INTERIOR
U. S. GEOLOGICAL SURVEY

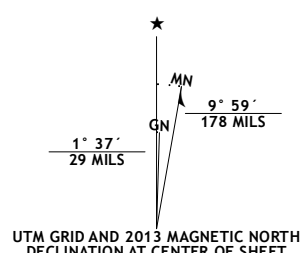


RED HORSE GULCH QUADRANGLE
COLORADO
7.5-MINUTE SERIES

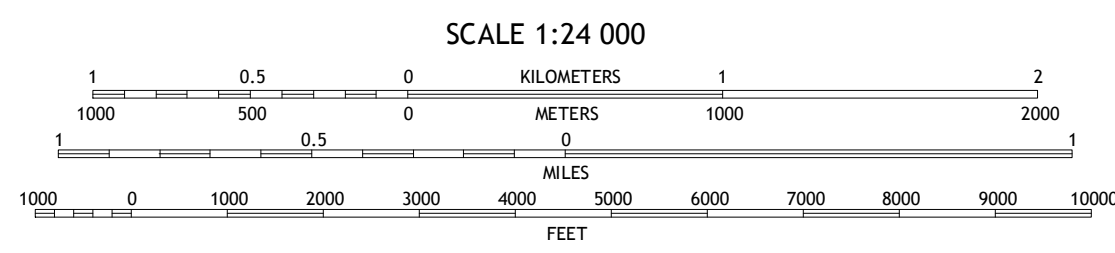


Produced by the United States Geological Survey
North American Datum of 1983 (NAD83)
World Geodetic System of 1984 (WGS84). Projection and
1 000-meter grid: Universal Transverse Mercator, Zone 12S
10 000-foot ticks: Colorado Coordinate System of 1983 (south
zone)

Imagery.....NAIP, July 2011
Roads.....©2006-2012 TomTom
Names.....GNIS, 2013
Hydrography.....National Hydrography Dataset, 2011
Contours.....National Elevation Dataset, 2001
Boundaries, IRW, IRC, USGS, 1972 - 2012
Public Land Survey System.....BLM, 2011

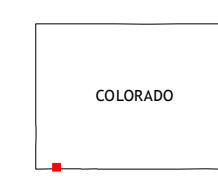


U.S. National Grid	
100,000-ft Square ID	YG - 100
Grid Zone Designation	12S

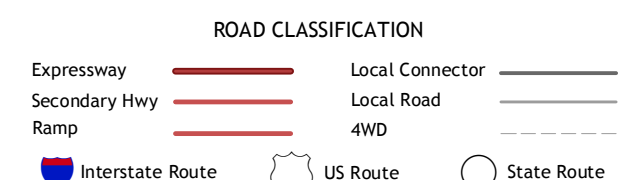


CONTOUR INTERVAL 40 FEET
NORTH AMERICAN VERTICAL DATUM OF 1988

This map was produced to conform with the
National Geospatial Program US Topo Product Standard, 2011.
A metadata file associated with this product is draft version 0.6.14



Moccasin Mesa	Trail Canyon	Mormon Reservoir
Greasewood Canyon	Red Horse Gulch	Red Mesa
Heller Point	Purgatory Canyon	La Plata



RED HORSE GULCH, CO
2013

ADJOINING 7.5 QUADRANGLES