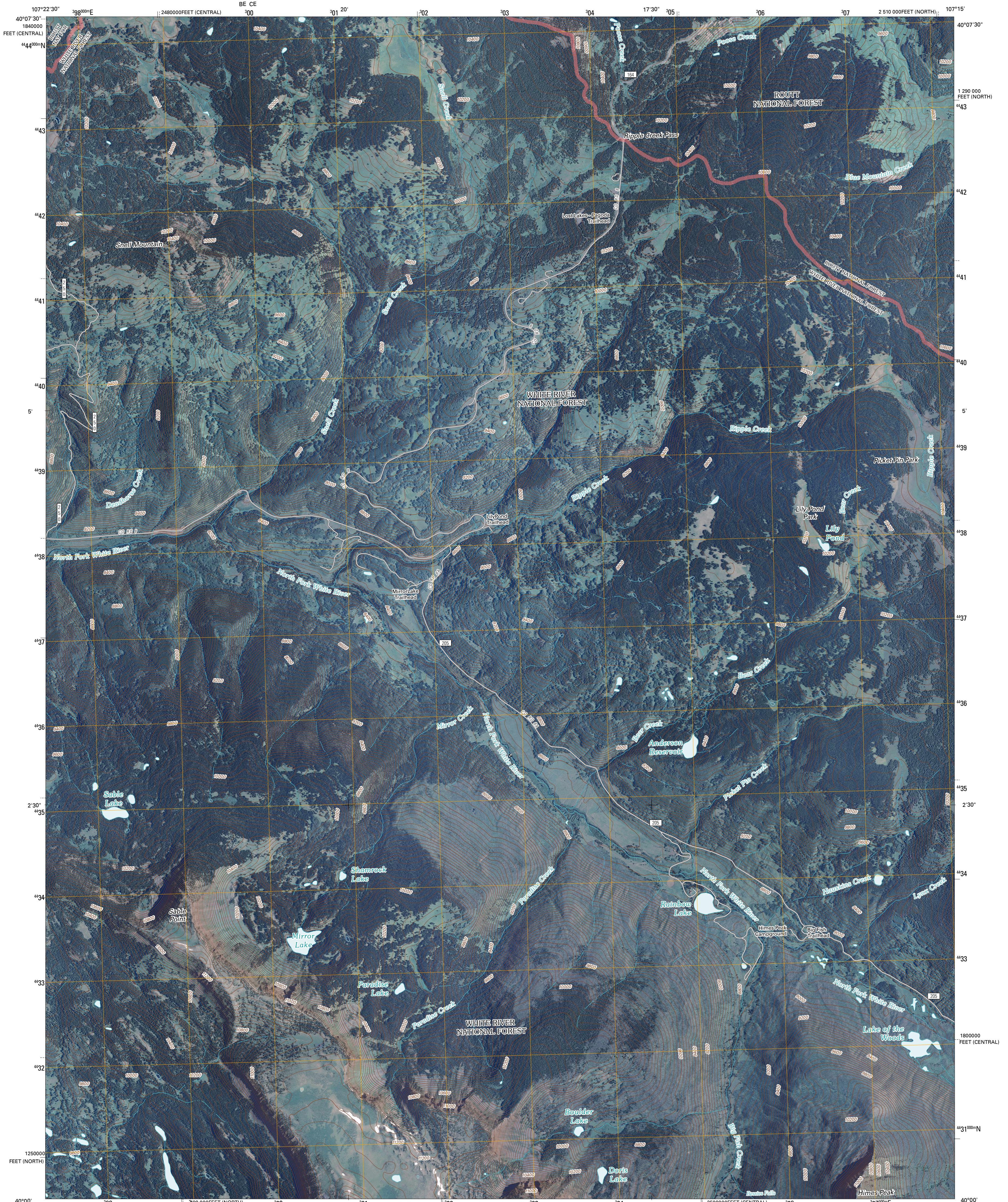




U.S. DEPARTMENT OF THE INTERIOR
U. S. GEOLOGICAL SURVEY



RIPPLE CREEK QUADRANGLE
COLORADO
7.5-MINUTE SERIES

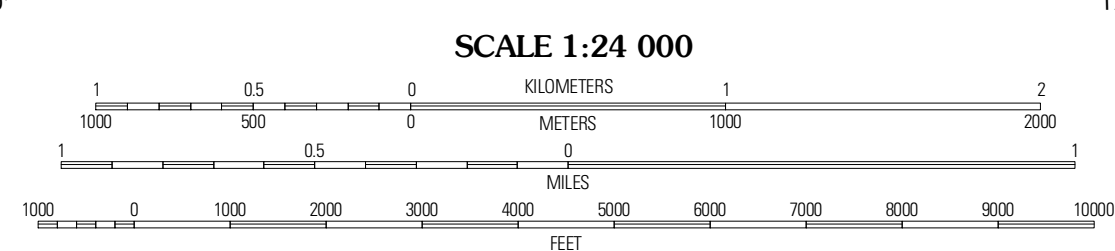


Produced by the United States Geological Survey
North American Datum of 1983 (NAD83)
World Geodetic System of 1984 (WGS84). Projection and
1 000-meter grid: Universal Transverse Mercator, Zone 13T
10 000-foot ticks: Colorado Coordinate System of 1983
(north and central zones)

Images:.....NIP, July 2009
Roads:.....©2006-2010 Tele Atlas
Roads within US Forest Service Lands:.....FS Topo Data
with limited Forest Service updates, 2009
Names:.....GNIS, 2009
Hydrography:.....National Hydrography Dataset, 2009
Contours:.....National Elevation Dataset, 2004

UTM GRID AND 2011 MAGNETIC NORTH
DECLINATION AT CENTER OF SHEET

U.S. National Grid
130,000 Easting (E)
125,000 Northing (N)
BE CE
Grid Zone Designation
13T



CONTOUR INTERVAL 40 FEET
NORTH AMERICAN VERTICAL DATUM OF 1988

This map was produced to conform with version 0.5.10 of the
draft USGS Standards for 7.5-Minute Quadrangle Maps.
A metadata file associated with this product is draft version 0.5.13

COLORADO

QUADRANGLE LOCATION

Slate Creek	Pagoda Peak	Dunkley Pass
Lost Park	Ripple Creek	Devils Causeway
Oyster Lake	Big Marine Peak	Trappers Lake

ADJOINING 7.5' QUADRANGLES

ROAD CLASSIFICATION

Interstate Route	State Route
US Route	Local Road
Ramp	4WD
FS Primary Route	US Route
	FS Passenger Route
	FS High Clearance Route

Check with local Forest Service unit
for current travel conditions and restrictions.

RIPPLE CREEK, CO
2011