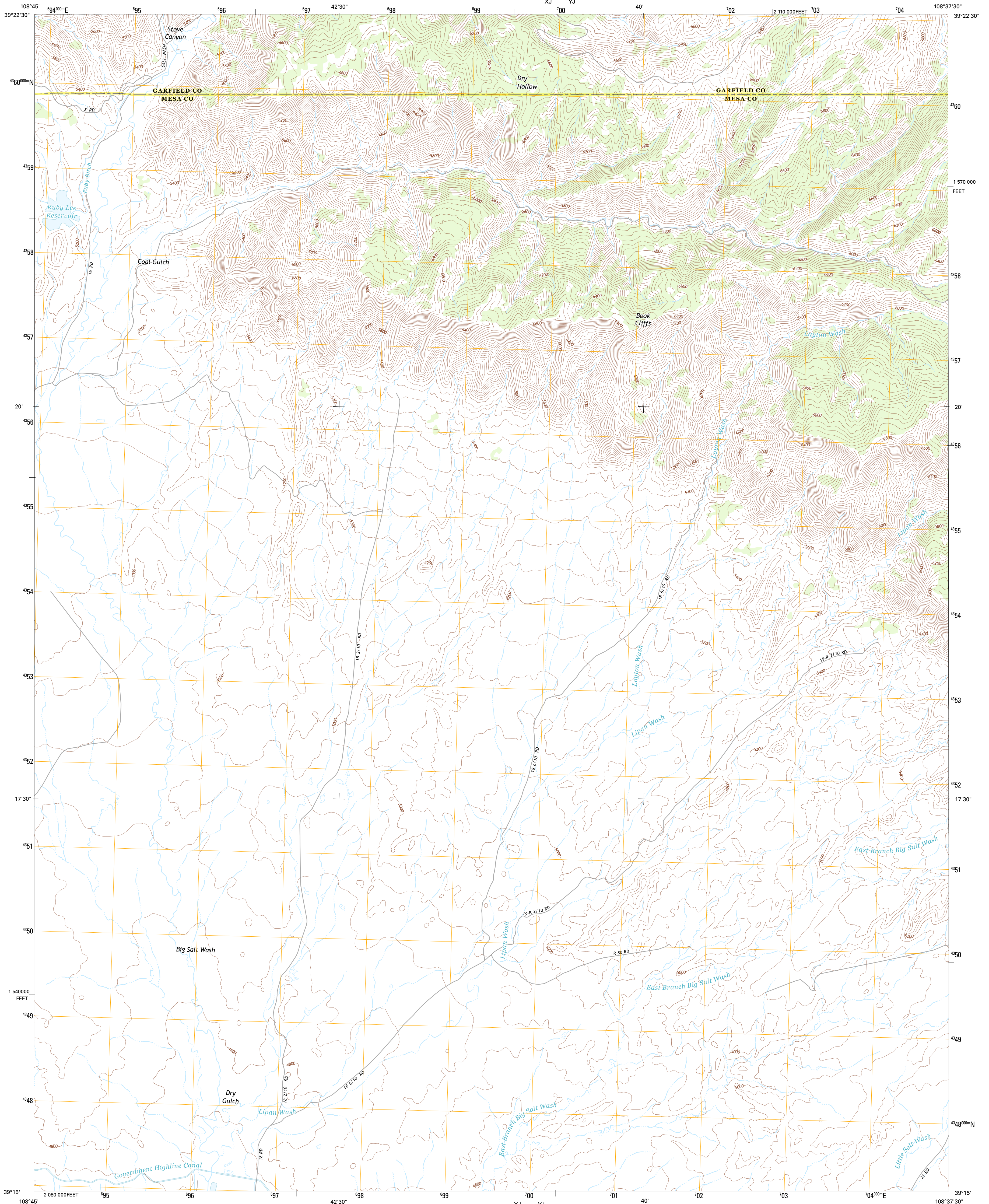




U.S. DEPARTMENT OF THE INTERIOR
U. S. GEOLOGICAL SURVEY

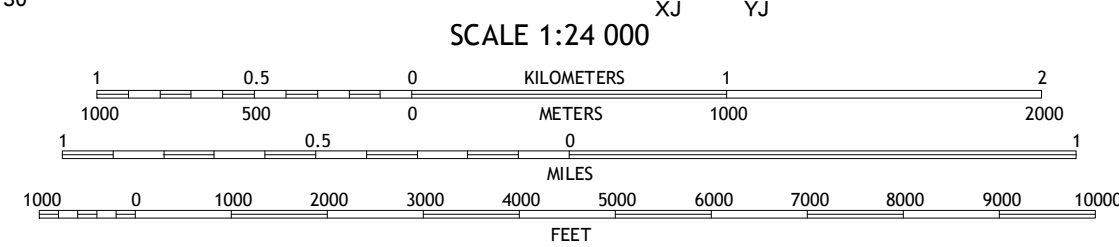
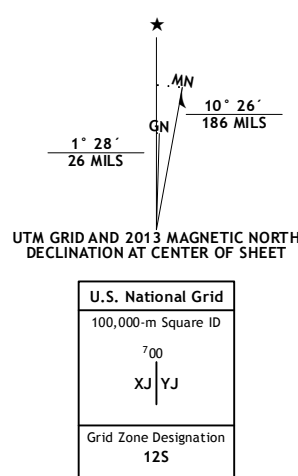


RUBY LEE RESERVOIR QUADRANGLE
COLORADO
7.5-MINUTE SERIES



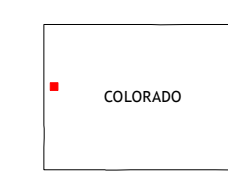
Produced by the United States Geological Survey
North American Datum of 1983 (NAD83)
World Geodetic System of 1984 (WGS84) Projection and
1 000-meter grid; Universal Transverse Mercator, Zone 12S
10 000-foot ticks; Colorado Coordinate System of 1983 (central zone)

Imagery.....NAIP, July 2011
Roads.....©2006-2012 TomTom
Names.....©2013 GNIS, 2013
Hydrography.....National Hydrography Dataset, 2011
Contours.....National Elevation Dataset, 1999
Boundaries.....Census, BGC, USGS, 1972-2012
Public Land Survey System.....BLM, 2011



CONTOUR INTERVAL 40 FEET
NORTH AMERICAN VERTICAL DATUM OF 1988

This map was produced to conform with the
National Geospatial Program US Topo Product Standard, 2011.
A metadata file associated with this product is draft version 0.6.14



Howard Canyon	Garvey Canyon	Middle Dry Fork
Highline Lake	Ruby Lee Reservoir	Corcoran Peak
Mack	Fruita	Corcoran Point

ROAD CLASSIFICATION

Expressway
Secondary Hwy
Ramp
Interstate Route

Local Connector
Local Road
4WD
US Route
State Route

RUBY LEE RESERVOIR, CO
2013

ADJOINING 7.5 QUADRANGLES