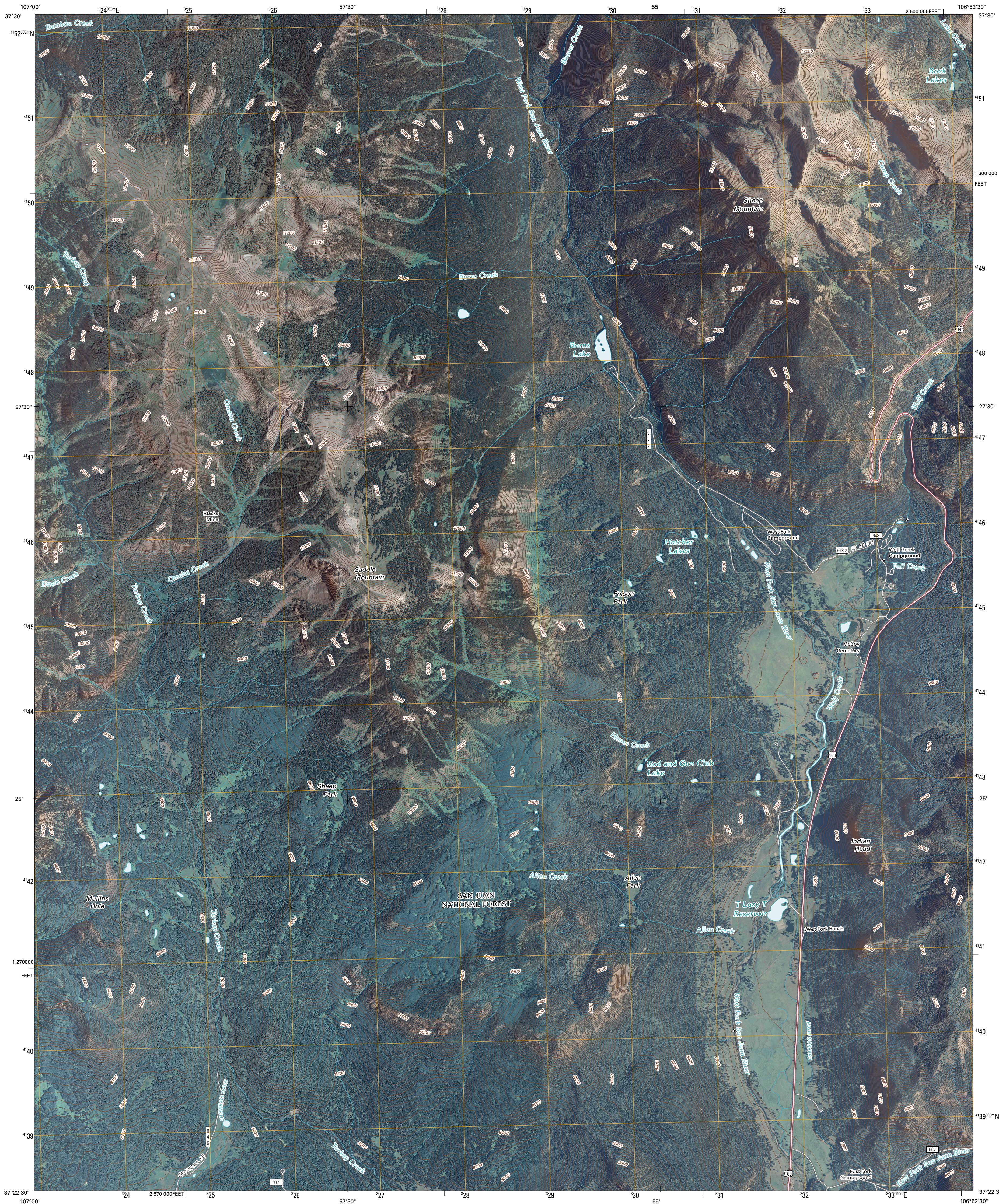




U.S. DEPARTMENT OF THE INTERIOR
U. S. GEOLOGICAL SURVEY

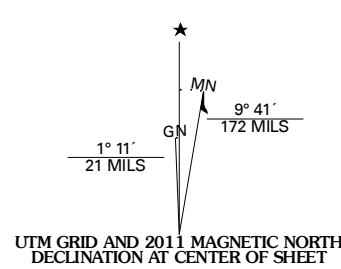


SADDLE MOUNTAIN QUADRANGLE
COLORADO
7.5-MINUTE SERIES

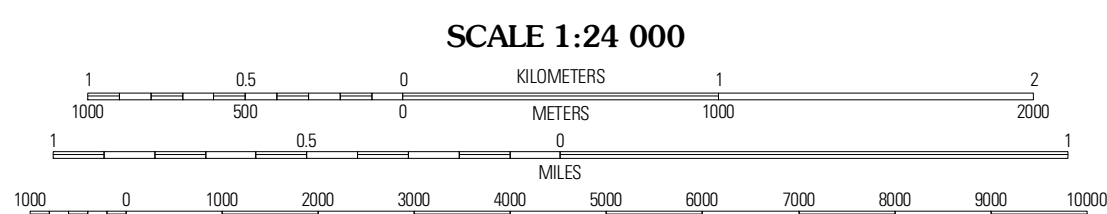


Produced by the United States Geological Survey
North American Datum of 1983 (NAD83)
World Geodetic System of 1984 (WGS84). Projection and
1 000-meter grid: Universal Transverse Mercator, Zone 13S
10 000-foot ticks: Colorado Coordinate System of 1983
(south zone)

Images.....NAIP, July 2009 - August 2009
Roads.....2006-2010 Tele Atlas
Roads within US Forest Service Lands.....FS Topo Data
with limited Forest Service updates, 2009
Names.....GNIS, 2009
Hydrography.....National Hydrography Dataset, 2009
Contours.....National Elevation Dataset, 2005



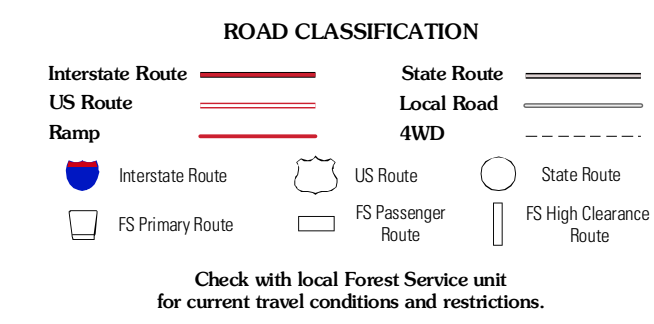
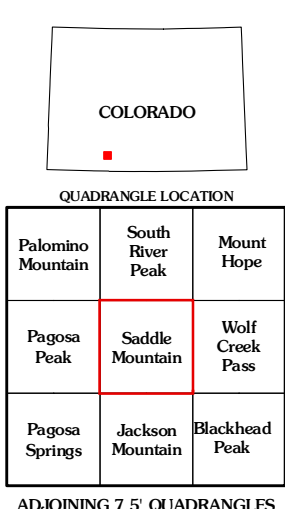
U.S. National Grid	100,000m Square ID
6B	
Grid Zone Designation	13S



SCALE 1:24 000

CONTOUR INTERVAL 40 FEET
NORTH AMERICAN VERTICAL DATUM OF 1988

This map was produced to conform with version 0.5.10 of the
draft USGS Standards for 7.5-Minute Quadrangle Maps.
A metadata file associated with this product is draft version 0.5.13



Check with local Forest Service unit
for current travel conditions and restrictions.

SADDLE MOUNTAIN, CO
2011