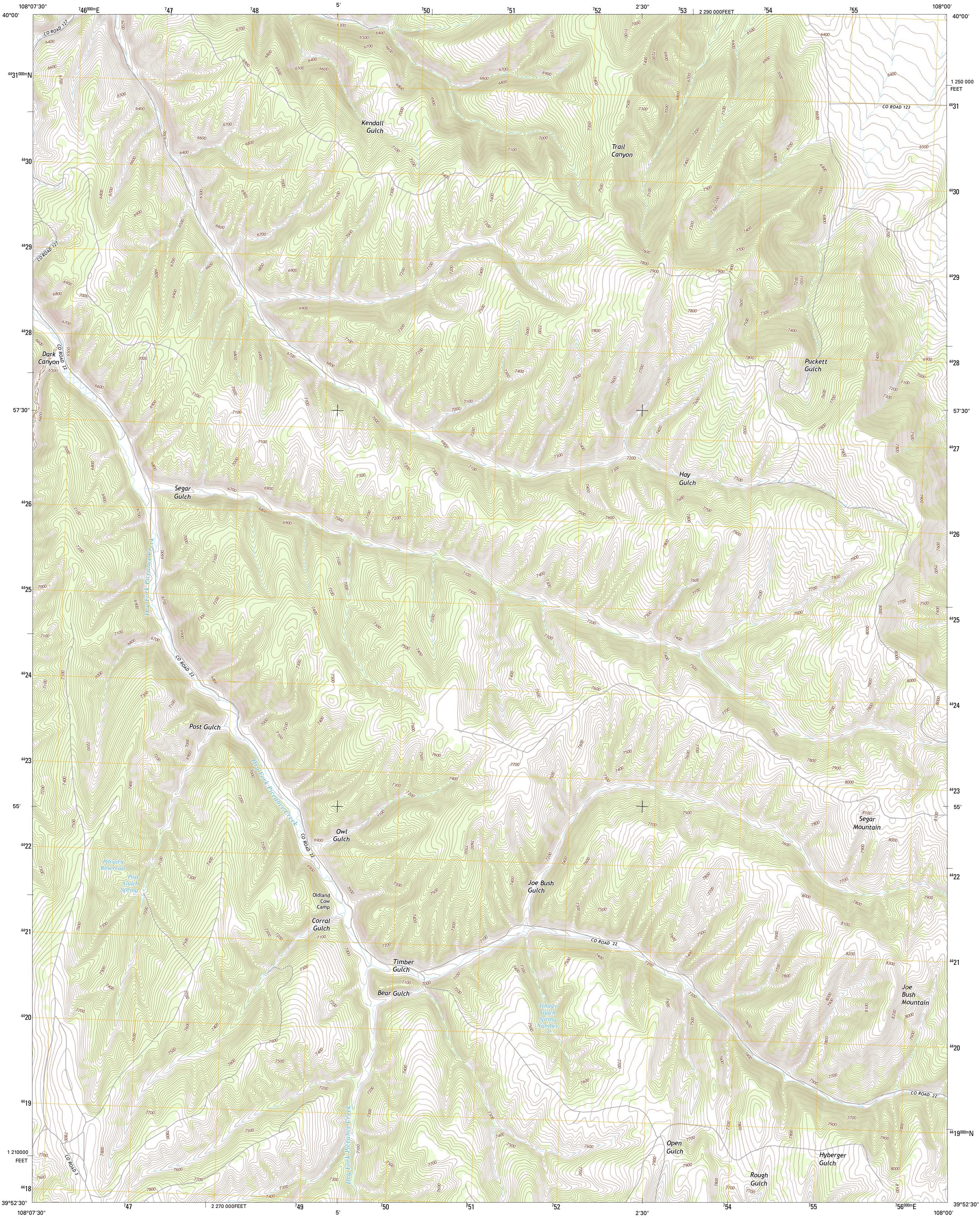




U.S. DEPARTMENT OF THE INTERIOR
U. S. GEOLOGICAL SURVEY

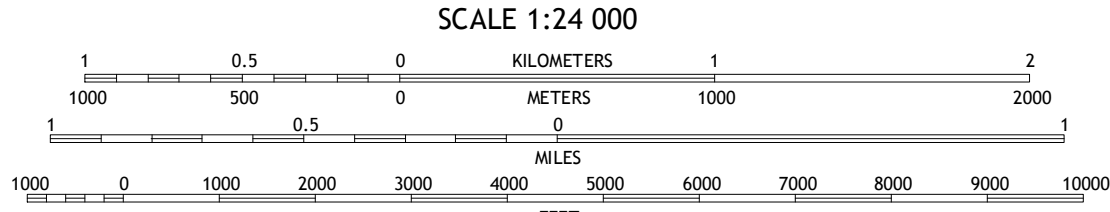
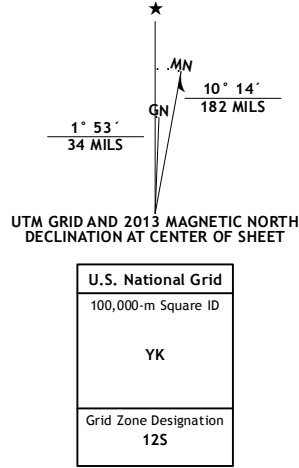


SEGAR MOUNTAIN QUADRANGLE
COLORADO-RIO BLANCO CO.
7.5-MINUTE SERIES

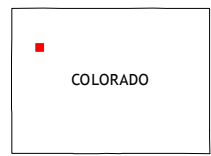


Produced by the United States Geological Survey
North American Datum of 1983 (NAD83)
World Geodetic System of 1984 (WGS84). Projection and
1 000-meter grid: Universal Transverse Mercator, Zone 12S
10 000-foot ticks: Colorado Coordinate System of 1983 (north
zone)

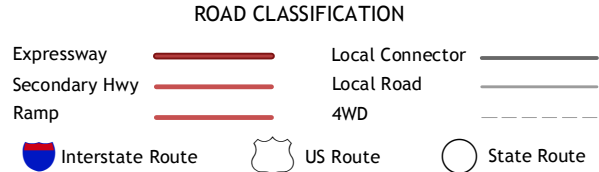
Imagery.....NAIP, July 2011
Roads.....©2006-2012 TomTom
Names.....GNS, 2013
Hydrography.....National Hydrography Dataset, 2011
Contours.....National Elevation Dataset, 2006
Boundaries.....Census, IBWC, IBC, USGS, 1972 - 2012
Public Land Survey System.....BLM, 2011



CONTOUR INTERVAL 20 FEET
NORTH AMERICAN VERTICAL DATUM OF 1988
This map was produced to conform with the
National Geospatial Program US Topo Product Standard, 2011.
A metadata file associated with this product is draft version 0.6.14



White River City	Buckskin Point	Meeker
Greasewood Gulch	Segar Mountain	LO 7 Hill
Jesup Gulch	No Name Ridge	Thirteenmile Creek



SEGAR MOUNTAIN, CO
2013

ADJOINING 7.5 QUADRANGLES