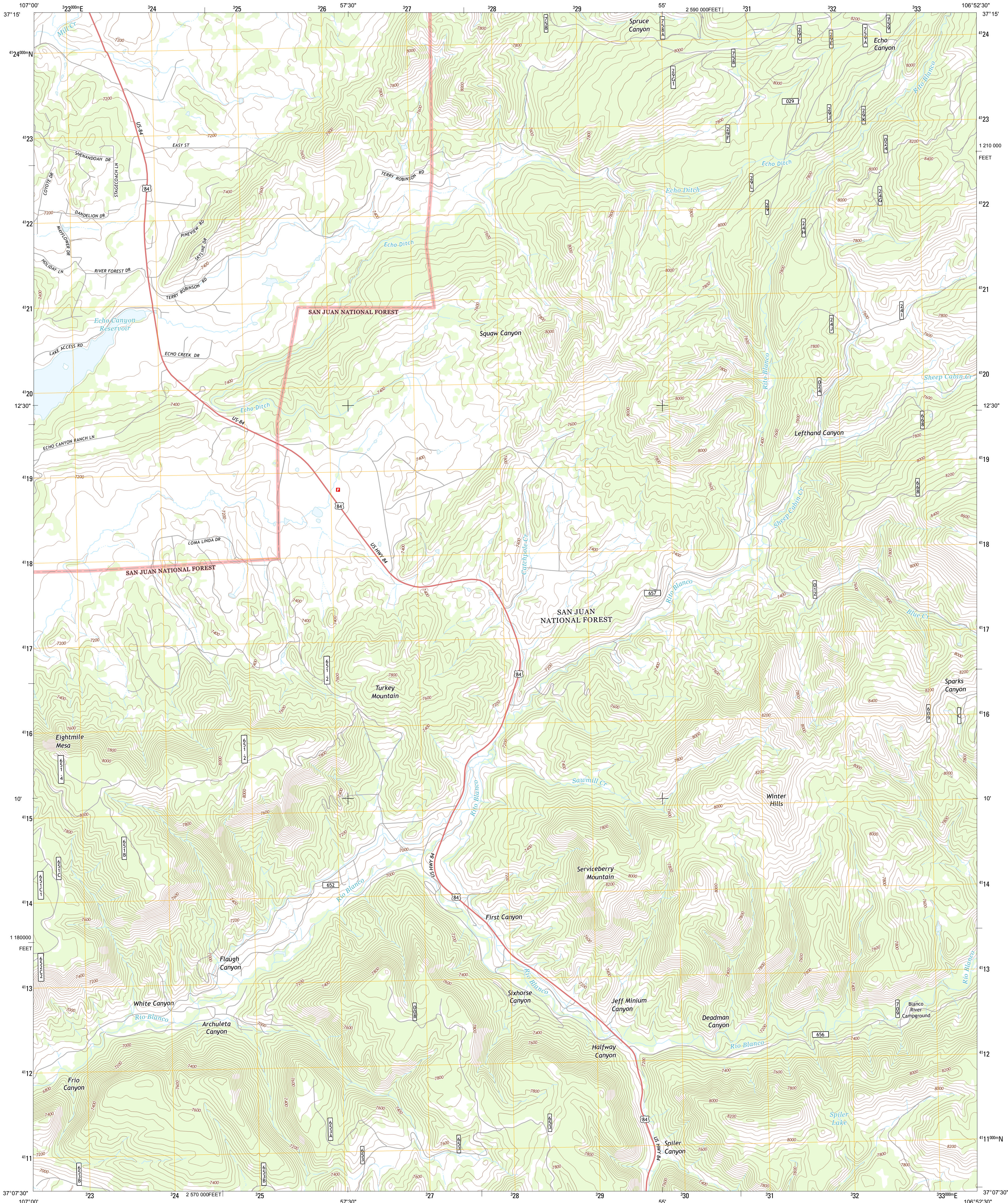




U.S. DEPARTMENT OF THE INTERIOR
U. S. GEOLOGICAL SURVEY

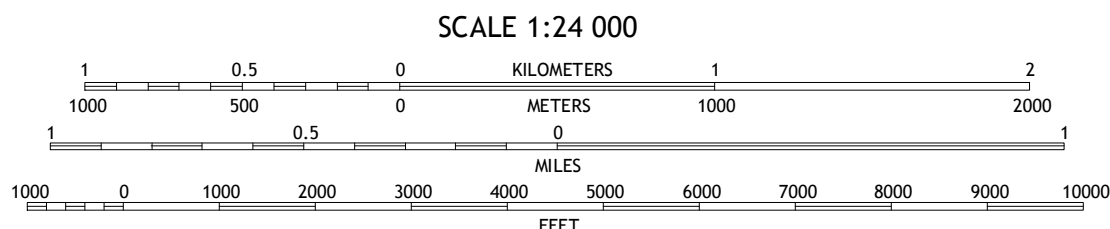
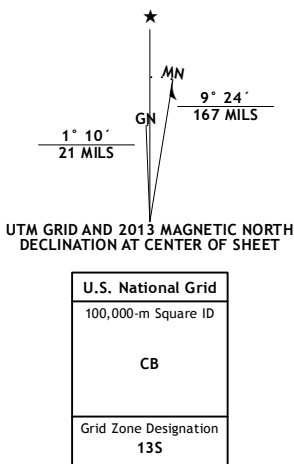


SERVICEBERRY MOUNTAIN QUADRANGLE
COLORADO-ARCHULETA CO.
7.5-MINUTE SERIES

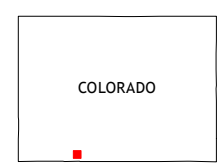


Produced by the United States Geological Survey
North American Datum of 1983 (NAD83)
World Geodetic System of 1984 (WGS84). Projection and
1 000-meter grid: Universal Transverse Mercator, Zone 13S
10 000-foot ticks: Colorado Coordinate System of 1983 (south
zone)

Imagery.....NAIP, August 2011
Roads.....©2006-2012 - 10m Tom
Roads within US Forest Service Lands.....FS Topo Data
with limited Forest Service updates, 2013
Names.....GNIS, 2013
Hydrography.....National Hydrography Dataset, 2011
Contours.....National Elevation Dataset, 2005
Boundaries.....Census, IBWC, IBC, USGS, 1972 - 2012
Public Land Survey System.....BLM, 2011



CONTOUR INTERVAL 40 FEET
NORTH AMERICAN VERTICAL DATUM OF 1988
This map was produced to conform with the
National Geospatial Program US Topo Product Standard, 2011.
A metadata file associated with this product is draft version 0.6.14



Pagosa Springs	Jackson Mountain	Blackhead Peak
Osabrush Hill	Serviceberry Mountain	Harris Lake
Trujillo	Edith	Chromo

ROAD CLASSIFICATION
Expressway
Secondary Hwy
Ramp
Interstate Route
US Route
FS Primary Route
Local Connector
Local Road
4WD
State Route
FS Passenger Route
FS High
Clearance Route
Check with local Forest Service unit
for current travel conditions and restrictions.

SERVICEBERRY MOUNTAIN, CO
2013

ADJOINING 7.5' QUADRANGLES